

SADDLES



TILTING SADDLES AZ04 - CATS

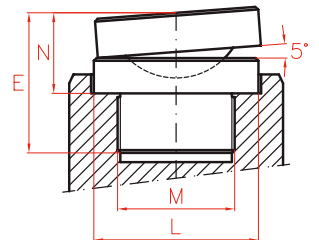
- ✓ Recommended for high side-load applications.
- ✓ These saddles allow up to 5° tilt angle.
- ✓ Push-in or threaded to suit different cylinder models.

HOLLOW SADDLES AZ05

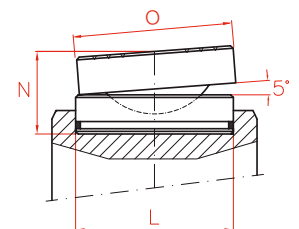
- ✓ Used in hollow piston cylinders.
- ✓ Specially used in pulling operations and as support.
- ✓ These saddles can be plain, threaded or solid.



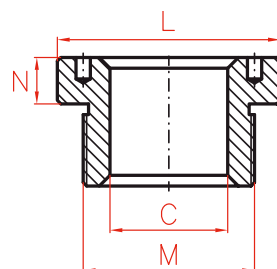
AZ04 THREADED TILTING SADDLES



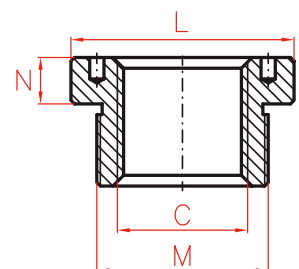
AZ04 - CATS TILTING SADDLES



AZ05 HOLLOW SADDLES



Standard Plain



Optional Internal Thread





Type **AZ04-05, CATS**

Capacity -

Max. pressure **700 bar**

AZ04 - THREADED TILTING SADDLES

Model	L	M	N	E	Weight	Cylinder Model
LARZEP	mm		mm	mm	kg	
AZ0420	28	1"-8	29	43	0,2	SM010-D010
AZ0423	35	1"-8	29	49	0,3	SM015-D020
AZ0421	45	1 1/2"-16	28	50	0,4	SM023-SM030-D030
AZ0422	61	1 3/4"-12	38	58	0,7	D050-D075-D100
AZ0424	88	2 1/2"-12	47	82	2,5	D150
AZ0425	111	2 1/2"-12	52	107	4,5	D200
AZ0431	34	M28 x 1,5	29	44	0,3	SH012
AZ0432	48	1 9/16"-16	29	46	0,5	SH022
AZ0433	55	1 13/16"-16	37	57	0,6	SH030-SAH030-DH030-DAH030
AZ0434	80	2 3/4"-16	47	67	2,3	SH060-SAH060-DH060-DAH060
AZ0435	116	2 1/2"-12	52	76	5,5	SH100-SAH100-DH100-DAH100

AZ04 - CATS - TILTING SADDLES

Model	L	N	O	Weight	Cylinder Model
LARZEP	mm	mm	mm	kg	
AZ0401	45	36	-	0,4	SAM030-SP030-SMP030
AZ0402	61	39	-	0,8	SM050-SM075-SAM050-SP050-SMP050-SX050-SX075-DDA050
AZ0404	88	47	-	2,2	SM100-SM140-SAM100-SAM140-SP100-SMP100-SX100-SX150-DDA100
AZ0405	111	52	-	4,0	SM220
CATS50	50	34,0	71	1,0	STC030-STC050-DDC050
CATS100	71	30,0	71	1,5	STC100-DDC100
CATS150	94	39,2	97	3,0	STC140-SSC140-DDC140
CATS200	113	43,0	126	4,4	STC220-SSC220-DDC220
CATS300	140	68,5	175	10,3	STC300-SSC300-DDC300
CATS400	159	78,0	210	17,0	STC400-SSC400-DDC400
CATS500	179	77,0	230	20,0	STC500-SSC500-DDC500
CATS600	194	81,5	250	24,0	STC600-SSC600-DDC600
CATS800	224	86,5	275	32,0	STC800-SSC800-DDC800
CATS1000	249	105,5	300	46,0	STC1000-SSC1000-DDC1000

AZ05 - HOLLOW SADDLES

Standard Plain					Cylinder Model	Optional Threaded				
Model	C	L	M	N		Model	C	L	M	N
LARZEP	mm	mm		mm		LARZEP		mm		mm
AZ0531	19,5	34	M28 x 1,5	7	SH012	AZ0551	3/4"-16	34	M28 x 1,5	7
AZ0532	27,0	48	1 9/16"-16	8	SH022-SAH022	AZ0552	1"-8	48	1 9/16"-16	8
AZ0533	33,4	55	1 13/16"-16	9	SH030-SAH030-DH030-DAH030	AZ0553	1 1/4"-7	55	1 13/16"-16	9
AZ0536	56,0	80	2 3/4"-16	12	SH060-SAH060-DH060-DAH060	AZ0556	1 5/8"-5 1/2	80	2 3/4"-16	12
AZ0540	81,0	116	4"-16	13	SH100-SAH100-DH100-DAH100	AZ0560	2 1/2"-8	116	4"-16	13
AZ0545	81,0	135	4 1/4"-16	20	DH150	AZ0565	2 1/2"-8	135	4 1/4"-16	20