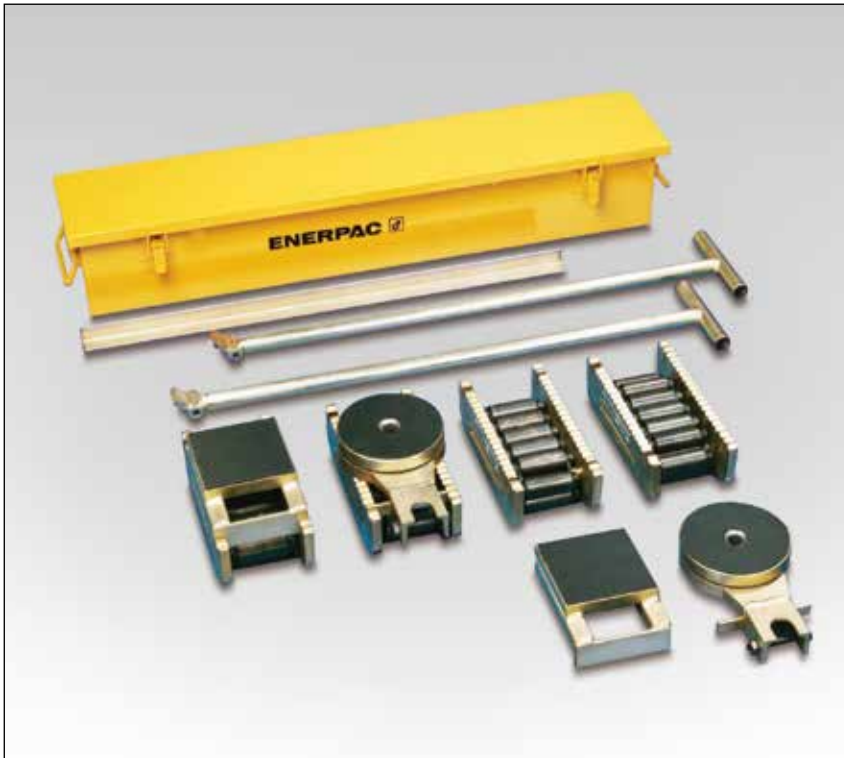


▼ Shown: Set ERS20



- Rugged and sturdy construction for long life
- Low profile construction for increased stability
- Low rolling-resistance allows for easy transportation
- Attachable load leveling plates and swivel turntables for turning corners.

## Move Heavy Loads Easily and Safely



Sets (see table) include all components necessary to handle a variety of applications.

Two **ELB1** link-up bars, two **ERH1** handles (875 mm long) and one **EMB1** metal box are included.

Optional long handle **ERH2** (1180 mm) available for 60 and 80 ton only.



### Lifting Wedges and Machine Lifts

To place the Load Skates, the load must first be lifted. This can be done easily and safely using the Enerpac Lifting Wedge or Machine Lifts.

Page: 182

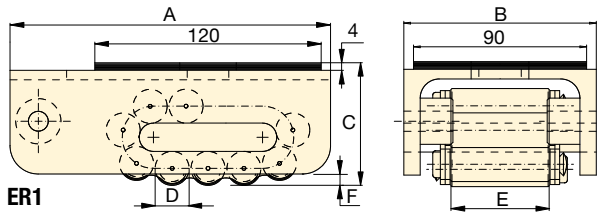
▼ Heavy transport using Load Skates. The machine is first lifted, using SOH-Series Enerpac Machine Lifts.



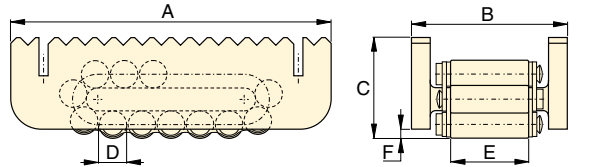
▼ Chemical tank transportation: The first few centimetres the load was lifted with RCS-Series low height cylinders and then moved on to load skates for transportation.



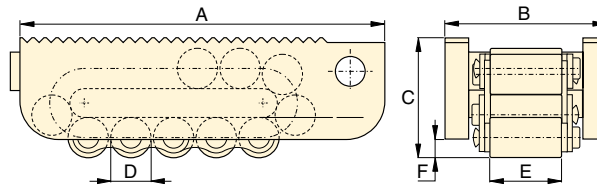
# Heavy Duty Caterroller™ Load Skates



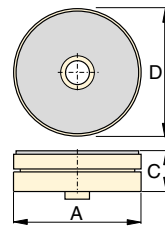
ER1



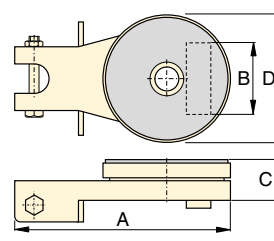
ER10, ER15, ER30



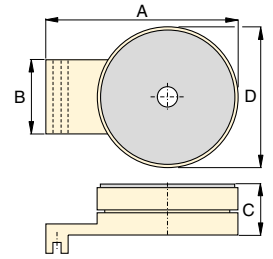
ER60, ER80



ES1, Turntable Swivel



ES10, ES15, ES30 Turntable Swivel



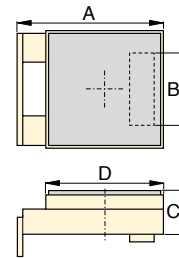
ES60, ES80, Turntable Swivel

**EL  
ER  
ES  
Series**

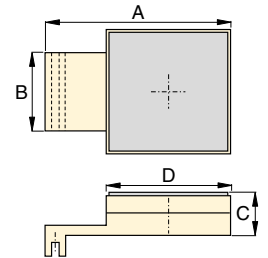


Maximum Carrying Capacity:  
**80 ton (711 kN)**

Load Skates may be ordered separately or as a matched set.					
Set Capacity *	Set Model Number	Load Skates (4x)	Turntable Swivels (2x)	Leveling Plates (2x)	Weight including handles and metal box (kg)
20 (178)	<b>ERS20</b>	ER10	ES10	ELP10	49
30 (267)	<b>ERS30</b>	ER15	ES15	ELP15	55
60 (533)	<b>ERS60</b>	ER30	ES30	ELP30	75



ELP10, ELP15, ELP30 Levelling Plate



ELP60, ELP80 Levelling Plate

\* Sets are designed to enable two skates to take full load for extra safety on uneven floor surfaces

	Capacity ton (kN)	Model Number	Dimensions (mm)						Contact Rolls per Skate	Rollers per Skate	Weight (kg)
			A	B	C	D	E	F			
	1 (8,9)	<b>ER1</b>	170	100	65	18	51	6	4	11	3,8
	10 (89)	<b>ER10</b>	210	102	66	18	51	6	5	15	5,2
	15 (133)	<b>ER15</b>	220	115	75	24	60	10	4	13	7,3
	30 (267)	<b>ER30</b>	270	130	92	30	68	10	4	13	13,0
	60 (533)	<b>ER60</b>	380	168	125	42	76	16	4	13	31,9
	1 (8,9)	<b>ES1</b>	207	-	26	90	-	-	-	-	1,1
	10 (89)	<b>ES10</b>	220	73	42	130	-	-	-	-	3,7
	15 (133)	<b>ES15</b>	220	86	42	130	-	-	-	-	3,7
	30 (267)	<b>ES30</b>	250	96	48	150	-	-	-	-	5,3
	60 (533)	<b>ES60</b>	275	114	61	190	-	-	-	-	13,7
	10 (89)	<b>ELP10</b>	149	73	42	120	-	-	-	-	3,7
	15 (133)	<b>ELP15</b>	149	86	42	120	-	-	-	-	3,7
	30 (267)	<b>ELP30</b>	178	96	48	130	-	-	-	-	5,3
	60 (533)	<b>ELP60</b>	270	114	61	180	-	-	-	-	13,8
	80 (711)	<b>ELP80</b>	350	128	61	200	-	-	-	-	18,8