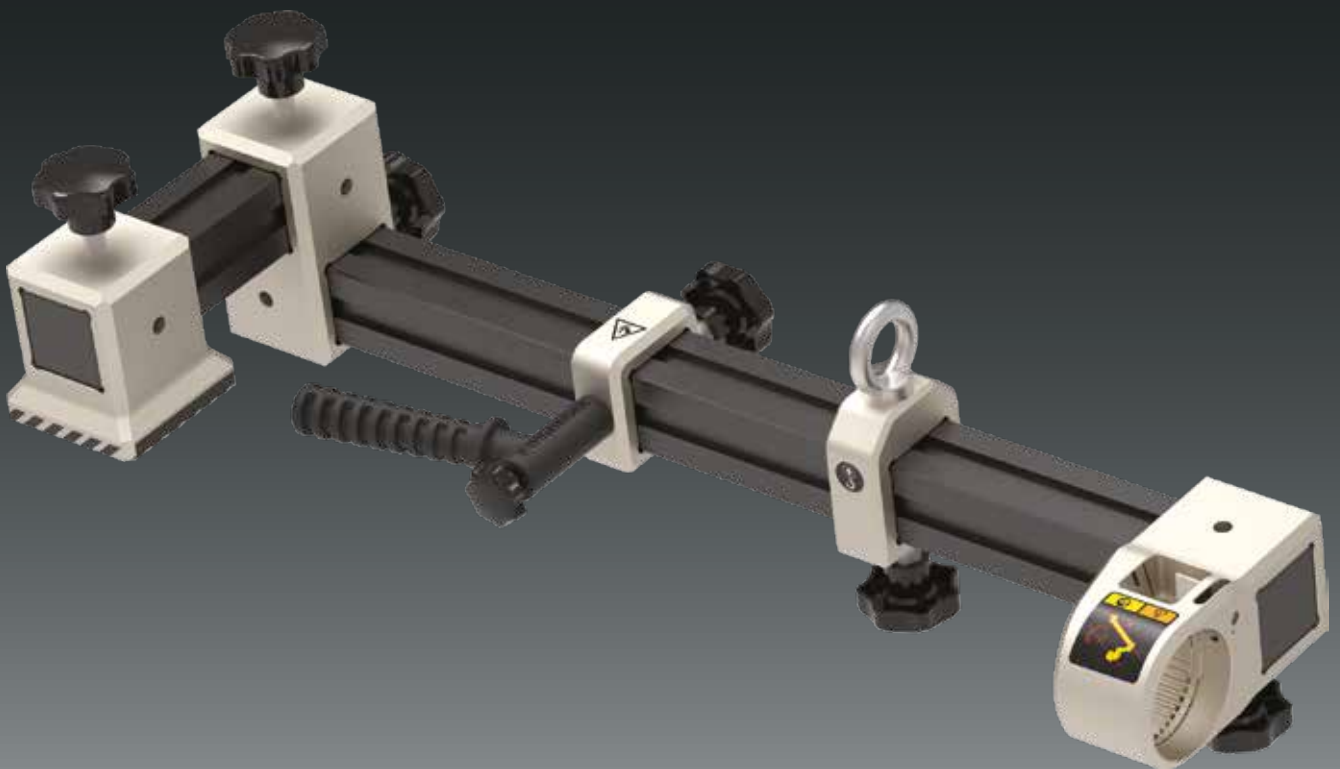


REACTION ARM KITS

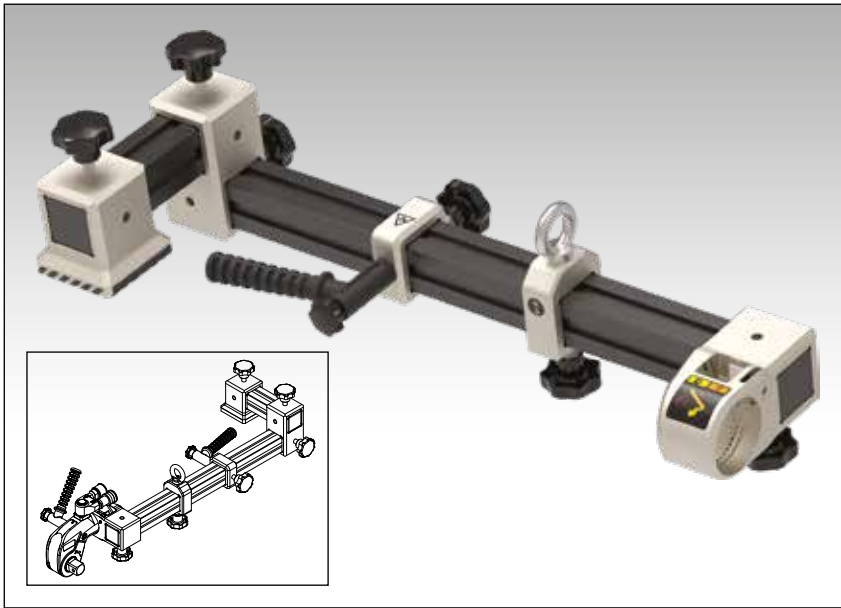
SIGNIFICANTLY IMPROVES WORKER SAFETY BY PROVIDING
A SAFETY TESTED AND FULL TORQUE RATED REACTION ARM
FOR ENERPAC SQUARE DRIVE TORQUE WRENCHES

ERAK-SERIES

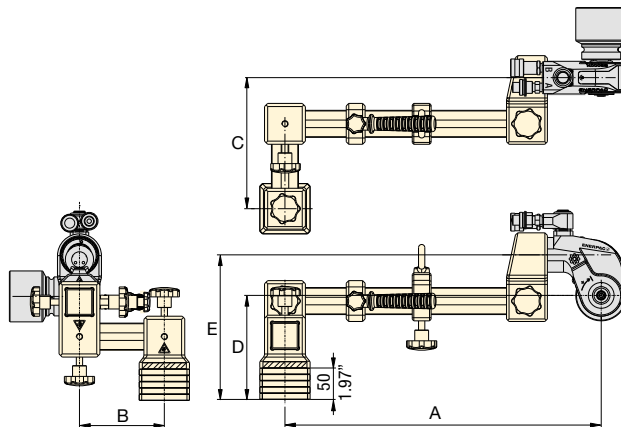


Reaction Arm Kits for S and RSL-Series Wrenches

▼ Typical Reaction Arm Kit assembly with optional wrench adaptor assembly



- Provides reaction point options for most common Enerpac S and RSL (RSQ)-Series Square Drive torque wrenches.
- Significantly improves worker safety by providing a safety tested and full torque rated reaction arm, and increases tool fit
- Can be configured in unique standard setups which are suitable to repetitive work
- Can also be used with the hexagon Allen-Key drives on the torque wrench
- Replaces multiple custom reaction arms
- Eliminates the need for Extended Reaction Arm and Reaction Tubes.



ERAK Series

Min. - Max. Length:

149 - 555 mm

Full Torque Rated:

2034 - 10.847 Nm

Full Torque Rated:

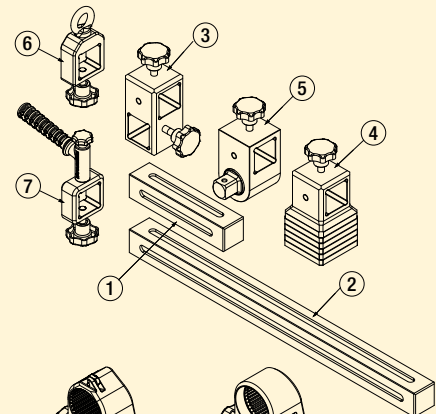
1500 - 8000 Ft.lbs



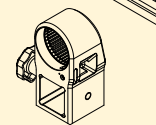
ERAK - Reaction Arm Kits

Complete Kit Includes the following components:

- ① Short Beam – 200 mm (7.9 inch)
- ② Long Beam – 450 mm (17.7 inch)
- ③ Beam Connector Assembly, 90°
- ④ Reaction Foot Assembly
- ⑤ Square Drive Adaptor Assembly
- ⑥ Lifting Point Assembly
- ⑦ Positioning Handle Assembly




TWRAKRS1 * Wrench Adaptor Assembly for RSL-Series



TWRAKS * Wrench Adaptor Assembly for S-Series

* The Wrench Adaptors must be ordered separately.

▼ SELECTION CHART REACTION ARM KITS & OPTIONAL WRENCH ADAPTOR ASSEMBLY

Use With Torque Wrench Model	Model Number Reaction Arm Kit	Model Number Wrench Adaptor Assembly *	Torque Wrench Output		Maximum ERAK Working Torque		Dimensions (mm)					 (kg)
			(Nm)	(Ft.lbs)	(Nm)	(Ft.lbs)	A min. - max.	B	C	D	E	
S1500X	ERAK1500	TWRAKS15	1952	1440	2034	1500	149 - 495	148	215	118	164	11,0
RSL1500		TWRAKRSL2-1500	1909	1408	2034	1500	185 - 530	148	215	114	164	11,0
S3000X	ERAK3000	TWRAKS3	4373	3225	4745	3500	183 - 503	135	209	111	175	17,1
RSL3000		TWRAKRSL4-3000	4176	3080	4745	3500	222 - 542	135	209	117	175	17,1
S6000X	ERAK8000	TWRAKS6	8338	6150	10.847	8000	270 - 552	116	199	155	236	36,2
RSL5000		TWRAKRSL6-5000	7190	5303	10.847	8000	214 - 496	116	199	166	236	36,2
RSL8000		TWRAKRSL8-8000	10.659	7862	10.847	8000	273 - 555	116	199	166	236	36,2

* The Wrench Adaptors must be ordered separately.