

# REACTION ARM KITS

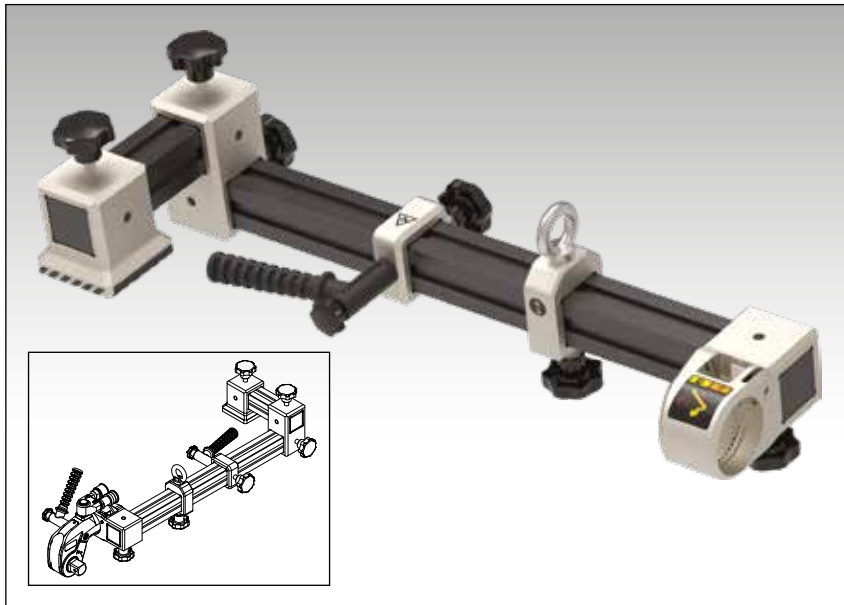
SIGNIFICANTLY IMPROVES WORKER SAFETY BY PROVIDING  
A SAFETY TESTED AND FULL TORQUE RATED REACTION ARM  
FOR ENERPAC SQUARE DRIVE TORQUE WRENCHES

## ERAK-SERIES

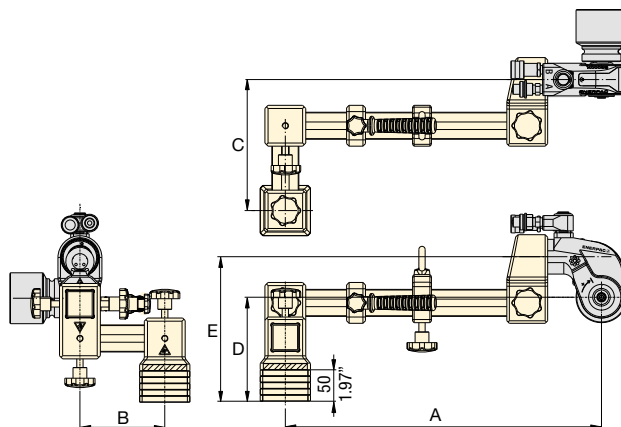


# Reaction Arm Kits for S and RSL-Series Wrenches

▼ Typical Reaction Arm Kit assembly with optional wrench adaptor assembly



- Provides reaction point options for most common Enerpac S and RSL (RSQ)-Series Square Drive torque wrenches.
- Significantly improves worker safety by providing a safety tested and full torque rated reaction arm, and increases tool fit
- Can be configured in unique standard setups which are suitable to repetitive work
- Can also be used with the hexagon Allen-Key drives on the torque wrench
- Replaces multiple custom reaction arms
- Eliminates the need for Extended Reaction Arm and Reaction Tubes.



## ERAK Series

Min. - Max. Length:

**5.9 - 21.9 inches**

Full Torque Rated:

**1500 - 8.000 Ft.lbs**

Full Torque Rated:

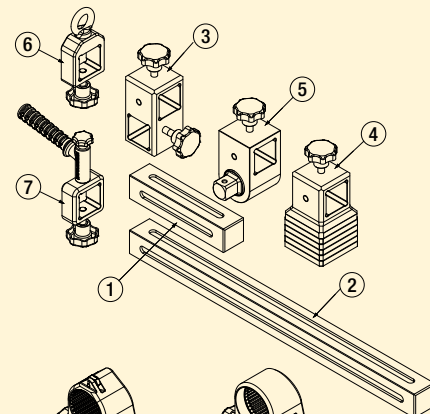
**2034 - 10.847 Nm**



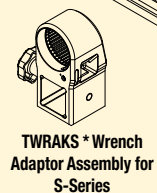
### ERAK - Reaction Arm Kits

Complete Kit Includes the following components:

- ① Short Beam – 7.9 inch (200 mm)
- ② Long Beam – 17.7 inch (450 mm)
- ③ Beam Connector Assembly, 90°
- ④ Reaction Foot Assembly
- ⑤ Square Drive Adaptor Assembly
- ⑥ Lifting Point Assembly
- ⑦ Positioning Handle Assembly




TWRAKSL \* Wrench Adaptor Assembly for RSL-Series



TWRAKS \* Wrench Adaptor Assembly for S-Series

\* The Wrench Adaptors must be ordered separately.

### ▼ SELECTION CHART REACTION ARM KITS & OPTIONAL WRENCH ADAPTOR ASSEMBLY

Use With Torque Wrench Model No.	Model Number Reaction Arm Kit	Model Number Wrench Adaptor Assembly *	Torque Wrench Output		Maximum ERAK Working Torque		Dimensions (inch)					 (lbs)
			(Ft.lbs)	(Nm)	(Ft.lbs)	(Nm)	A min. - max.	B	C	D	E	
S1500X	ERAK1500	TWRAKS15	1440	1952	1500	2034	5.9 - 19.5	5.8	8.5	4.6	6.5	24.2
RSL1500		TWRAKRS12-1500	1408	1909	1500	2034	7.3 - 20.9	5.8	8.5	4.5	6.5	24.2
S3000X	ERAK3000	TWRAKS3	3225	4373	3500	4745	7.2 - 19.8	5.3	8.2	4.4	6.9	37.6
RSL3000		TWRAKRS14-3000	3080	4176	3500	4745	8.7 - 21.3	5.3	8.2	4.6	6.9	37.6
S6000X	ERAK8000	TWRAKS6	6150	8338	8000	10.847	10.6 - 21.7	4.6	7.8	6.1	9.3	79.6
RSL5000		TWRAKRS16-5000	5303	7190	8000	10.847	8.4 - 19.5	4.6	7.8	6.5	9.3	79.6
RSL8000		TWRAKRS18-8000	7862	10.659	8000	10.847	10.7 - 21.9	4.6	7.8	6.5	9.3	79.6

\* The Wrench Adaptors must be ordered separately.