

Flange Pulling Tools

▼ FC10TE



FC Series

FLANGE CLOSING TOOLS

Closing Force:

11.2 tons

Closing Distance:

22.4 - 0 inches

Maximum Operating Pressure:

10,000 psi



CAUTION

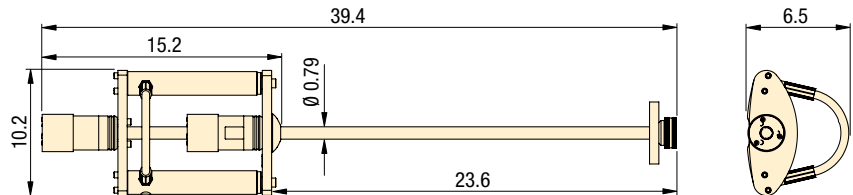
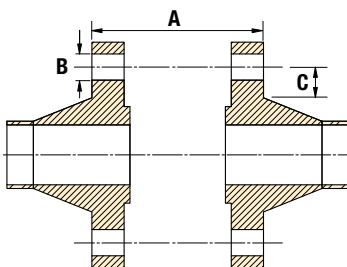
A minimum of two flange closing tools must be used when flange pulling. This will enable the operator to maintain an even gap between flange faces and prevent flange / gasket damage.

- Applicable to all flanges with a bolt-hole diameter of 1 inch or greater, including ANSI, DIN, Norsok L005, ASME and BS flanges
- Slide and lock collet system
- Low profile tool
- Can be used on all vertical and horizontal flanges including ANSI, API, BS, DIN & Norsok L005
- Robust yet lightweight
- Subsea compatible
- Reciprocating hydraulic action

OPERATING BENEFITS

- Reduction in operator fatigue
- Reduction in pinch point
- Quick and easy to use

Flange Dimensions



FC10TESTD STD Kit



- 1 x FC10TE Tool
- 1 x 10,000 psi Hydraulic Hose, 6.5' long
- 1 x 10,000 psi HP550S Single Port Sealed Hand Pump with Gauge
- 1 x Aluminium Carry Case with Protective Foam Inserts

FC10TEMAX MAX Kit



- 2 x FC10TE Tool
- 2 x 10,000 psi Hydraulic Hoses, 6.5' long
- 1 x 10,000 psi HP550D Twin Port Sealed Hand Pump with Gauge
- 1 x Aluminium Carry Case with Protective Foam Inserts

| Model Number | Type | Maximum Closing Force Per Tool (ton) | Closing Distance (in) | Flange Dimensions (in) | | | Tool Weight (lbs) | Kit Weight (lbs) | Box/Case Dimensions (in) | Tool Number |
|--------------|-----------|---|--------------------------|---------------------------|-----------|-----------|----------------------|---------------------|-----------------------------|-------------|
| | | | | A | B min. | C min. | | | | |
| FC10TESTD | Hydraulic | 11.2 | 22.4 | 0.63-22.4 | 1* | 1.3 | 24.3 | 51.8 | 35.0 x 22.4 x 6.5 | FC10TE |
| FC10TEMAX | Hydraulic | 11.2 | 22.4 | 0.63-22.4 | 1* | 1.3 | 24.3 | 80.5 | 35.0 x 22.4 x 6.5 | FC10TE |

* For hole diameter greater than 1.7 inches, please contact Enerpac.