

HEAVY-LIFTING STRAND JACK SYSTEM

WORLD CLASS STRAND JACKS
HIGH CAPACITY, PRECISION CONTROL,
DURABILITY, RELIABILITY AND SAFETY.



HSL-SERIES

ENERPAC 

▼ HSL1507, HSL20006, HSL7006 Heavy-Lifting Strand Jacks



High Capacity Precision Control



Strand Jacks

Enerpac strand jacks are the strand jacks of choice for customers seeking precise synchronous control with heavy-lifting capacity in an economical, compact, and reliable foot print.

Enerpac strand jacks are powered by electrical or diesel driven hydraulic power packs and controlled by Enerpac's proprietary SCC-Smart Cylinder Control System to ensure full control of lifting and lowering operations.

Enerpac continually improves reliability, durability, and safety of their strand jacks, making them an industry standard for heavy-lifting.

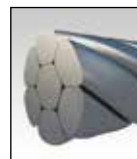
- Precision control of synchronous lifting and lowering
- Can be controlled by a single operator from a central location for increased safety
- Automated locking - unlocking operation
- Two strand sizes: 0.62 and 0.71 inch (15.7 and 18 mm)
- Telescopic strand guide pipes prevent bird caging
- Internal components are coated with Lunac, an anti-corrosion coating, making it suitable for marine environments
- Lifting anchor included with all strand jacks
- Lloyd's witness tested to 125% of maximum working load.



Strand Wedges

Wedges are hardened and nickel coated to resist corrosion, resulting in an extra long life.

Page: **7**



Heavy-Lifting Strands

Enerpac offers 0.62 inch (15.7 mm) and 0.71 inch (18 mm) heavy-duty strands.

Page: **7**



◀ HSL85007 Strand Jack System used on Enerpac custom Self Erecting Tower.

Heavy-Lifting Strand Jacks



Strand Jacks

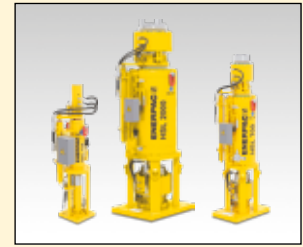
A strand jack can be considered a linear winch. In a strand jack, a bundle of steel strands are guided through a main "lifting" jack.

Above and below the cylinder are anchor systems with wedges that grip the strand bundle simultaneously. Lifting and lowering a load is achieved by hydraulically controlling the main jack and both mini jacks alternately.

In the case of system pressure loss, the wedges are mechanically closed automatically, holding the suspended load in place.

Today strand jacks are widely recognized as the most sophisticated heavy lifting solution. They are used all over the world to erect bridges, load out offshore structures, and lift/lower heavy loads where the use of conventional cranes is neither economical nor practical.

HSL Series



Capacity:
17 - 935 tons

Stroke:
10 - 18 inches

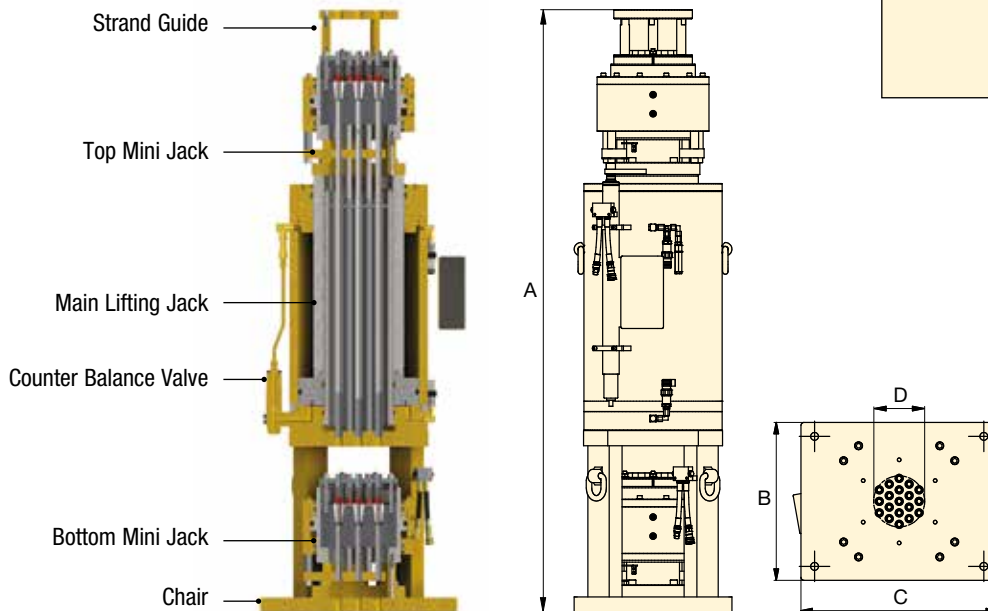
Maximum Operating Pressure:
2,000 - 5,000 psi



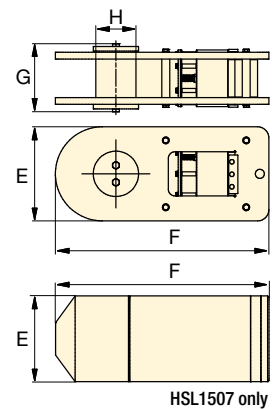
SLPP-Series, Hydraulic Power Packs

Enerpac offers a comprehensive range of hydraulic power packs that are optimized for use with their industry leading heavy lifting strand jacks.

Page: **5**



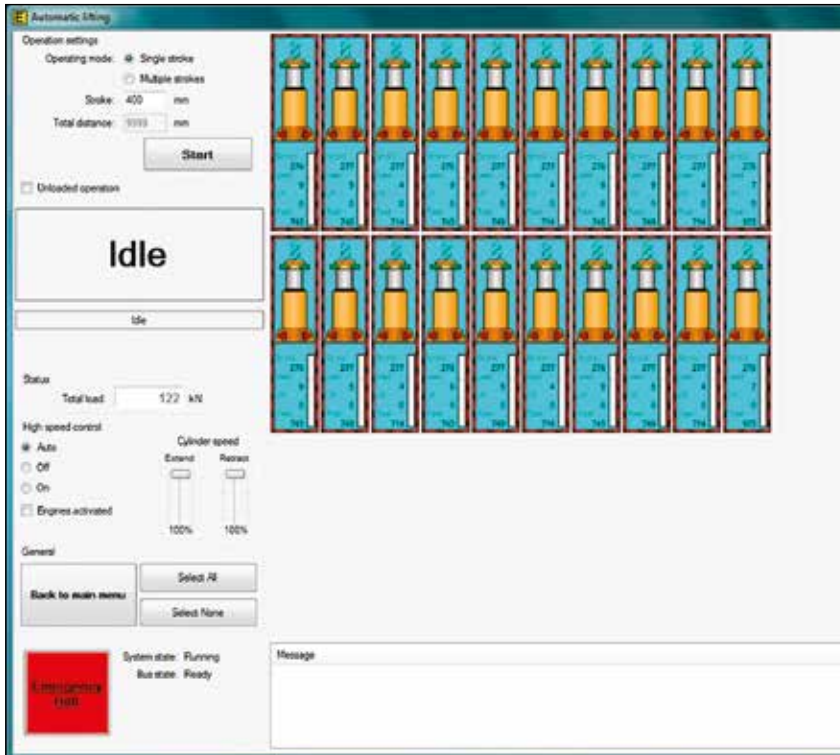
▼ LIFTING ANCHOR



| HEAVY-LIFTING STRAND JACKS | | | | | | | | | | | LIFTING ANCHORS (included) | | | | |
|----------------------------|------------|-----------------|-------------------|--------|------------------|------|------|------|------|--------|----------------------------|------|------|------|-------|
| Strand Diameter | Capacity * | Model Number | Number of Strands | Stroke | Working Pressure | A | B | C | D | | E | F | G | H | |
| inch (mm) | (tons) | | | (in) | (psi) | (in) | (in) | (in) | (in) | (lbs) | (in) | (in) | (in) | (in) | (lbs) |
| 0.62 (15.7) | 77 | HSL7006 | 7 | 18 | 3,000 | 75.4 | 14.2 | 22.6 | 3.7 | 1523 | 9.8 | 28.4 | 8.9 | 4.3 | 134 |
| | 220 | HSL20006 | 19 | 18 | 3,400 | 78.4 | 20.6 | 25.6 | 6.7 | 3203 | 16.3 | 37.1 | 14.3 | 7.0 | 582 |
| | 550 | HSL50006 | 48 | 18 | 5,000 | 87.3 | 28.9 | 28.9 | 11.1 | 7694 | 24.4 | 54.5 | 21.9 | 10.2 | 1826 |
| 0.71 (18) | 17 | HSL1507 | 1 | 10 | 3,200 | 48.9 | 8.7 | 8.7 | 0.8 | 224 | 2.6 | 7.0 | — | — | 11 |
| | 50 | HSL4507 | 3 | 18 | 2,000 | 75.4 | 14.2 | 22.6 | 3.7 | 1523 | 9.8 | 28.4 | 8.9 | 4.3 | 134 |
| | 110 | HSL10007 | 7 | 18 | 3,000 | 75.8 | 16.1 | 24.6 | 4.5 | 2128 | 11.8 | 33.7 | 10.1 | 4.7 | 235 |
| | 935 | HSL85007 | 55 | 18 | 5,000 | 94.6 | 35.4 | 35.4 | 14.3 | 11,648 | 30.9 | 68.1 | 26.0 | 12.4 | 3494 |

* Capacity is based on 2.5 minimum safety factor over strand breaking load. See page 7 for details.

▼ Shown: **SCC-Smart Cylinder Control System**



Smart Box

The Smart Box is Enerpac's proprietary control platform. It allows an operator to control up to 60 strand jacks simultaneously with a standard laptop.

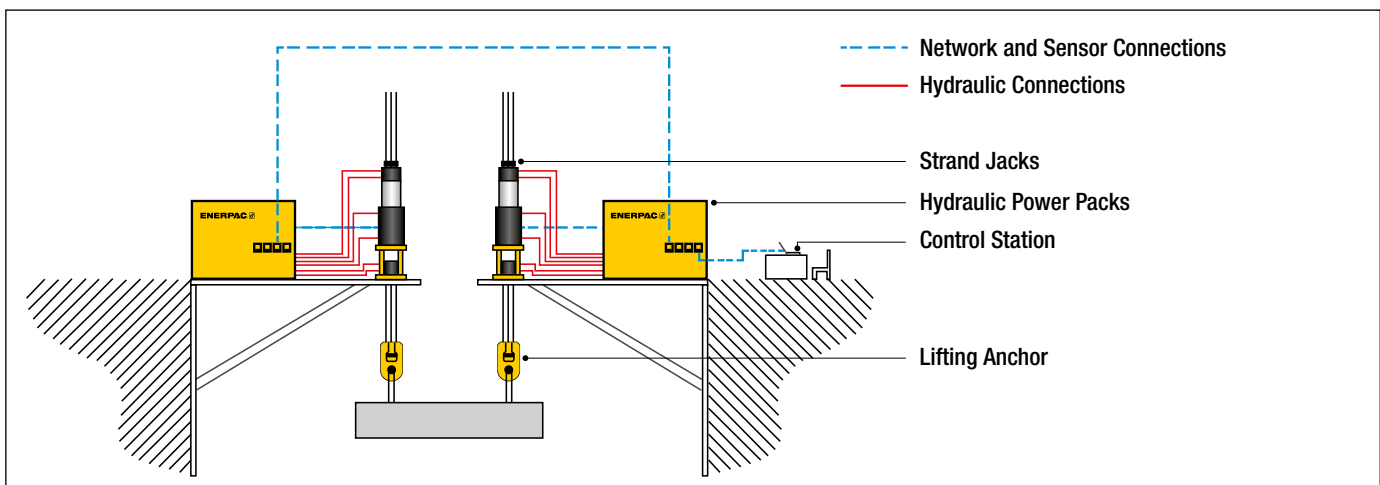
Smart Box Model number: **SBSJSCC-V4**
Optional Laptop Model nr: **SBLT-1**

▼ Enerpac's SCC-Smart Cylinder Control System simplifies synchronous operation with intuitive controls and a user-friendly graphical interface.



- Single operator control from a central location provides safe and reliable operation
- Synchronous lift/lower and load control between the lifting positions
- Automatic lifting and lowering cycles
- Displays individual and accumulative stroke/load
- Ability to operate up to 60 strand jacks simultaneously
- Simple graphical user interface
- Data logging and export capabilities.

▼ System overview showing a 2-Point Lift with Automatic Control.



Electric Hydraulic Power Packs

▼ SLPP30EJ Hydraulic Power Pack



SLPP Series

Flow at Rate Pressure:

0.9 - 11.4 gal/min

Motor Size:

3 - 40 hp

Reservoir Capacity:

5.3 - 92.5 gallons

Maximum Operating Pressure:

3,400 - 5,000 psi



Service and Maintenance Kits

Service and Maintenance Kits available for both strand jacks and power packs to minimize downtime.


Page: **7**

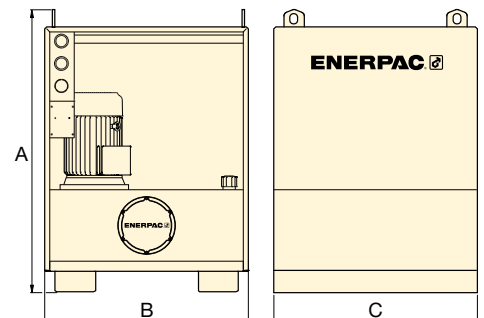
- Variable frequency drive motor (VFDM) for precision control
- Optimized for use with specific strand jack sizes
- Equipped with a hydraulic safety circuit
- Pumps are easily connected with a standard RS-485 network cable
- Integrated Emergency-stop on pump
- Connection for auxiliary hand pendant
- Pumps include:
 - reservoir sight glass
 - return tank filter
- Enclosed frame with integrated lifting lugs and fork lift pockets
- Standard voltage for electric pumps is 460-480 V, 3 phase, 50-60 Hz.

| Theoretical Lifting Speed (ft/hr) * | | | | |
|-------------------------------------|------------------------|----|----|----|
| Strand Jack Capacity (tons) | Pump Motor Size (hp) * | | | |
| | 3 | 10 | 20 | 40 |
| 17 | 40 | — | — | — |
| 50 | — | 49 | — | — |
| 77 | — | 49 | — | — |
| 110 | — | 40 | — | — |
| 220 | — | 20 | — | — |
| 550 | — | — | 20 | 33 |
| 935 | — | — | — | 20 |

* Theoretical lifting speeds. Each application should be evaluated to determine the optimum lifting speed for maximum safety and control. Contact Enerpac for more information.

Electric Hydraulic Power Packs

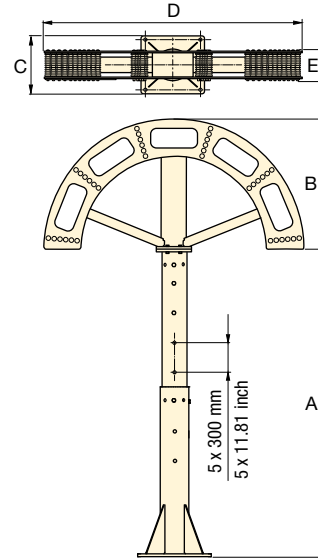
| Motor Size (hp) | Model Number 460-480 V, 3 ph, 50-60 Hz | Oil Flow at 1500 RPM (gal/min) | Maximum Working Pressure (psi) | A (in) | B (in) | C (in) |  (lbs) |
|-----------------|--|--------------------------------|--------------------------------|--------|--------|--------|---|
| 3 | SLPP2EJ | 0.9 | 3,400 | 36.8 | 23.6 | 23.6 | 352 |
| 10 | SLPP7EJ | 4.2 | 3,400 | 39.0 | 23.6 | 29.5 | 582 |
| 20 | SLPP15EJ | 7.9 | 5,000 | 51.2 | 39.4 | 39.4 | 1523 |
| 40 | SLPP30EJ | 11.4 | 5,000 | 57.5 | 75.6 | 34.3 | 2800 |




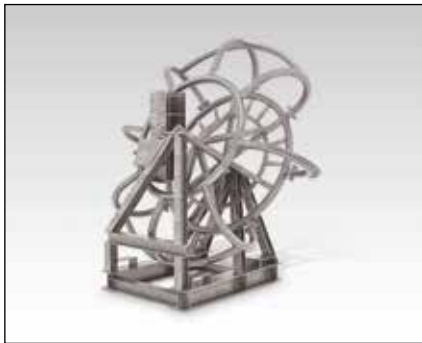


Strand Guide

- Provides a guide for the strand as a strand jack lifts the load
- Capable of feeding the strands into a strand recoiler
- Adjustable height.

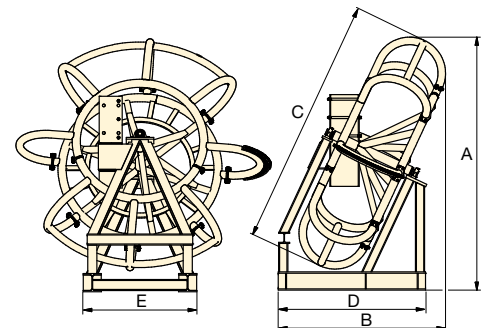



| Model Number | Maximum Number of Strands | | A (in) | | B | C | D | E |  (lbs) |
|--------------|---------------------------|-------------------|--------|------|------|------|-------|-------|--|
| | 0.62 inch (15,7 mm) | 0.71 inch (18 mm) | min. | max. | (in) | (in) | (in) | (in) | |
| SGS1 | 19 | 13 | 108 | 167 | 37.4 | 23.6 | 74.8 | 9.84 | 992 |
| SGM1 | 48 | 48 | 82 | 141 | 46.2 | 23.6 | 92.5 | 14.80 | 1544 |
| SGL1 | 55 | 55 | 98 | 157 | 60.2 | 29.5 | 120.4 | 14.76 | 2867 |

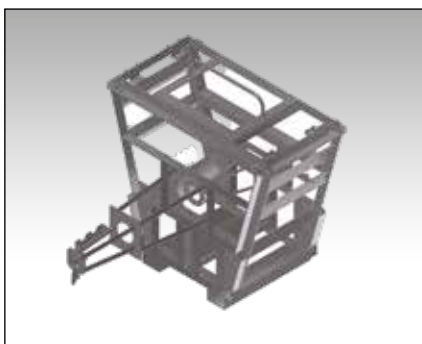


Strand Recoiler

- Passively pays in or pays out strands while jacking and lowering
- Must be used in combination with an Enerpac strand guide.

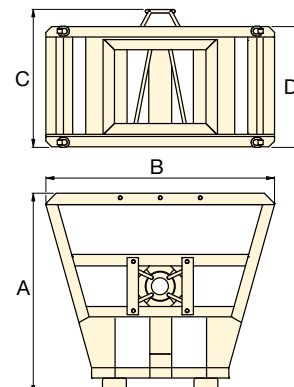



| Model Number | Maximum Number of Strands | Strand Capacity (length in feet) | | A | B | C | D | E |  (lbs) |
|--------------|---------------------------|----------------------------------|-------------------|------|------|-------|------|------|--|
| | | 0.62 inch (15,7 mm) | 0.71 inch (18 mm) | (in) | (in) | (in) | (in) | (in) | |
| SRCS1 | 20 | 2460 | 1640 | 76 | 39.4 | 69.4 | 39.4 | 70.9 | 981 |
| SRCL1 | 48 | 19,680 | 13,120 | 108 | 72.1 | 106.5 | 63.2 | 48.8 | 2205 |



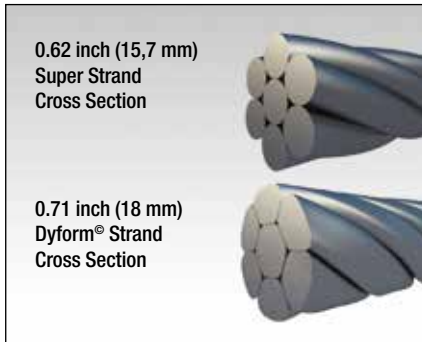
Strand Dispenser

- Essential to safely unbundle a new strand coil
- Provides method for dispensing strand for set-up.



| Model Number | A | B | C | D |  (lbs) |
|--------------|------|------|---------------------|------|--|
| | (in) | (in) | min. - max. (in) | (in) | |
| SD1 | 69.1 | 78.7 | 41.3 - 96.3 | 41.3 | 1434 |

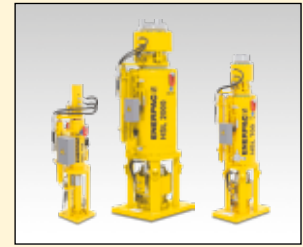
Strand Service and Maintenance Items



Heavy-Lifting Strands

- Strands available in 0.62 inch Super or 0.71 inch Dyform
- When used as directed with Enerpac HSL-Series Strand Jacks, strand meets 2.5:1 design factor prescribed by ASME B30.1.2020.

HSL Series



Capacity:
17 - 935 tons

Stroke:
10 - 18 inches

Maximum Operating Pressure:
2,000 - 5,000 psi

| Strand Diameter | Strand Type | Model Number * | Tensile Strength | Steel Area | Breaking Load | Length per Coil | Mass | |
|-----------------|-------------|----------------|------------------------|--------------------|---------------|-----------------|----------|-------|
| inch (mm) | | | (lbs/in ²) | (in ²) | (lbs) | (ft) | (lbs/ft) | (lbs) |
| 0.62 (15.7) | Super | SC06 | 269,770 | 0.233 | 62,722 | 8399 | 0.79 | 6614 |
| 0.71 (18) | Dyform® | SC07 | 246,564 | 0.346 | 85,427 | 5643 | 1.17 | 6614 |

* Sold by the coil. Coil weight and lengths are approximate and typically within 3% of nominal values.



Strand Wedges

- Hardened nickel coated wedges for long life and trouble-free wedge release
- Wedges are included with every strand jack and available as spare parts
- Wedge Lubricant (Part # HLWLS) ensures that the outside of the wedges are thoroughly lubricated to prevent unwanted binding and potential bird-caging of the strand.



Wedge Lubricant

During wedge maintenance or wedge replacement, it is critical that the outside of the wedges are thoroughly lubricated before placing them back into the anchor block. A stick lubricant or another type of pressure resistance grease should be used.

Model number: HLWLS

| Model Number | For Strand Diameter | | Package Quantity |
|--------------|---------------------|------|------------------|
| | (inch) | (mm) | |
| HLW06 | 0.62 | 15.7 | 50 |
| HLW07 | 0.71 | 18.0 | 50 |



Service and Maintenance Kits

Service and Maintenance Kits available for both strand jacks and power packs to minimize downtime.

- **Spare Part Kit A** contains basic service items for regular scheduled maintenance.
- **Spare Part Kit B** contains service and spare parts items to address easily damaged or worn items that require attention during important lifting applications.
- **Spare Part Kit C** (power packs only) contains service and spare parts items to ensure maximum up time for critical lifting jobs that cannot afford any delays.

| Power Pack Model Nr. 460-480 V | Power Pack Service Kit A | Power Pack Service Kit B | Power Pack Service Kit C |
|--------------------------------|--------------------------|--------------------------|--------------------------|
| SLPP2EJ | 03415410000 | 03415420002 | 03415430000 |
| SLPP7EJ | 02787410000 | 02787420002 | 02787430000 |
| SLPP15EJ | 01797410000 | 01797420002 | 01797430000 |
| SLPP30EJ | 03637410000 | 03637420002 | 03637430000 |

| Strand Jack Model Nr. | Strand Diameter inch (mm) | Heavy-Lifting Strand (full coil) | Total Wedges per Jack | Set of Strand Wedges (pack of 50) | Strand Jack Service Kit A | Strand Jack Service Kit B |
|-----------------------|------------------------------|-------------------------------------|-----------------------|--------------------------------------|---------------------------|---------------------------|
| HSL1507 | .71 (18) | SC07 | 3 | HLW07 | 02607410000 | 02607420000 |
| HSL4507 | .71 (18) | SC07 | 9 | HLW07 | 04033410000 | 04033420000 |
| HSL7006 | .62 (15.7) | SC06 | 21 | HLW06 | 02603410000 | 02603420000 |
| HSL10007 | .71 (18) | SC07 | 21 | HLW07 | 03828410000 | 03828420000 |
| HSL20006 | .62 (15.7) | SC06 | 57 | HLW06 | 02604410000 | 02604420000 |
| HSL50006 | .62 (15.7) | SC06 | 144 | HLW06 | 03937410000 | 03937420000 |
| HSL85007 | .71 (18) | SC07 | 165 | HLW07 | 04010410000 | 04010420000 |



THE RIGHT TOOL MAKES ALL THE DIFFERENCE

Enerpac heavy lifting technology products are put to work under the most intense and demanding conditions. That's why we never compromise. So you can rely on quality and precision every time, giving you the safest and most efficient path to a successful lift.

Enerpac heavy lifting technology combines technical excellence with proven performance – every day, every year, year after year. We believe that customers shouldn't have to compromise – they can rest easy knowing that even in the most complex situations, their reputations and safety are protected by the most trusted products available.

ELITE TOOLS. FOR ELITE PROFESSIONALS.

Heavy Lifting Technology



SFP-Series,
Split-Flow Pumps



EVO, EVOP-Series,
Synchronous Lifting Systems



SCJ-Series,
Self-Locking Cube Jacks



JS-Series,
Jack-Up Systems



ML-Series, Mini-Lift
Telescopic Hydraulic Gantry



SL, SBL-Series,
Telescopic Hydraulic Gantries



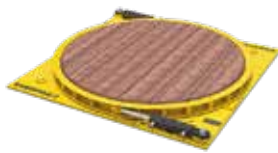
HSL-Series,
Strand Jack Systems



SHS-Series, SyncHoist
Synchronous Hoisting Systems



LH-Series,
Low-Height Skidding Systems



ETT-Series,
Hydraulic Turntables



ETR-Series,
Electric Trolley Systems



EMLS, EMV-Series,
Battery-Powered Machine Skates

ENERPAC 

enerpac.com