

L2630 Rev. B 03/16

⚠ WARNING Before beginning switch installation or replacement procedures, disconnect pump from electrical power source. Be sure that hydraulic pressure is completely relieved (0 psi/bar). Failure to observe these precautions could result in serious personal injury or death.

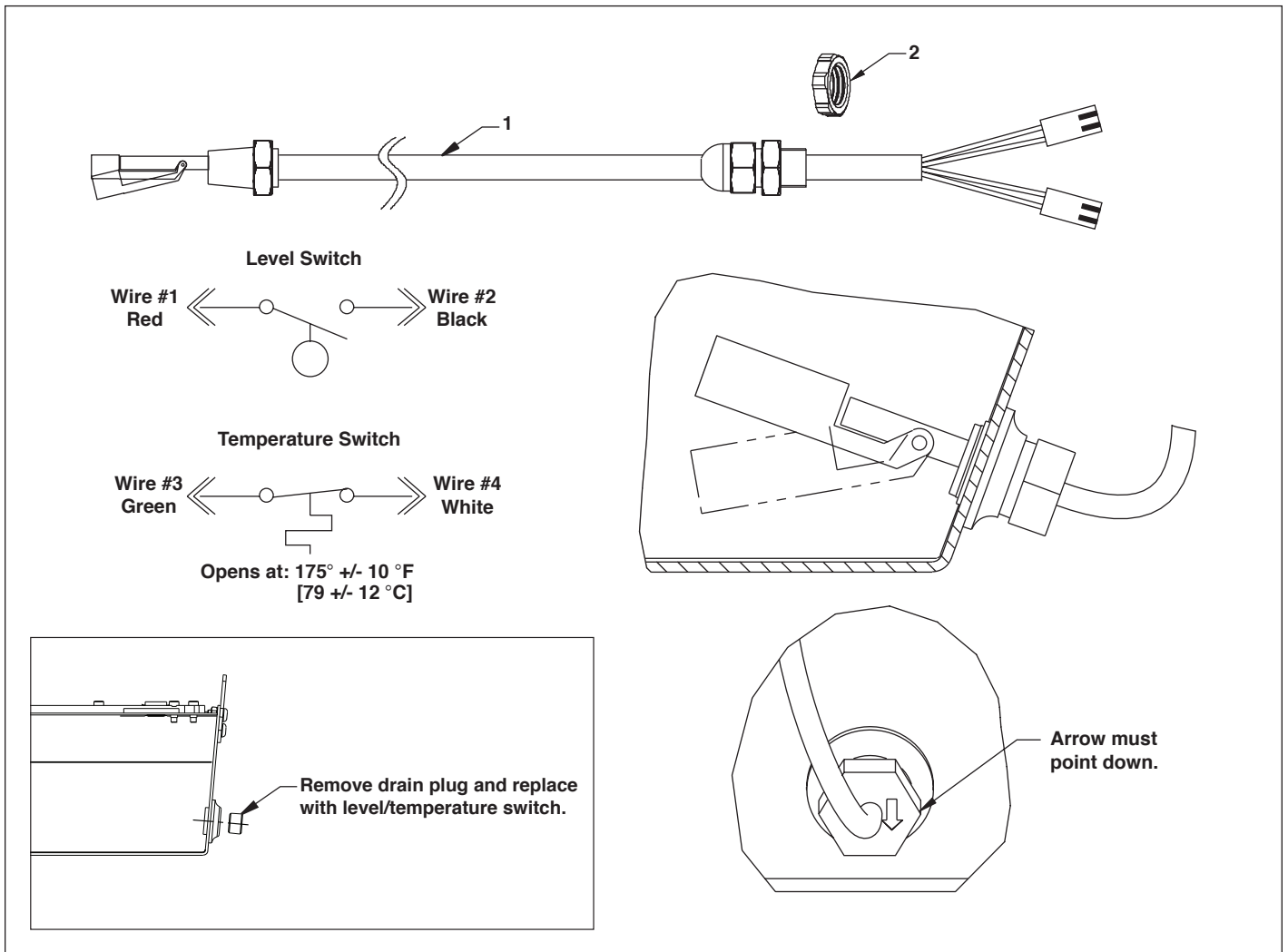


Figure 1, Mounting Details, ZLS-U4 Level/Temperature Switch Assembly

Repair Parts List for Figure 1

Item	Part Number	Qty.	Description
1	DC9507960	1	Level/Temperature Switch (includes cable)
2	DC9537021	1	Locking Nut, 16 mm

Note: Item 1: If replacement of connector or pins is necessary:

- Use AMP connector #770849-2 (quantity = 2 pieces).
- Use AMP pin #640706 (quantity = 4 pieces).
- For information about AMP connectors go to: www.amp.com.
- Enerpac does not provide the AMP pin connectors as a service part.

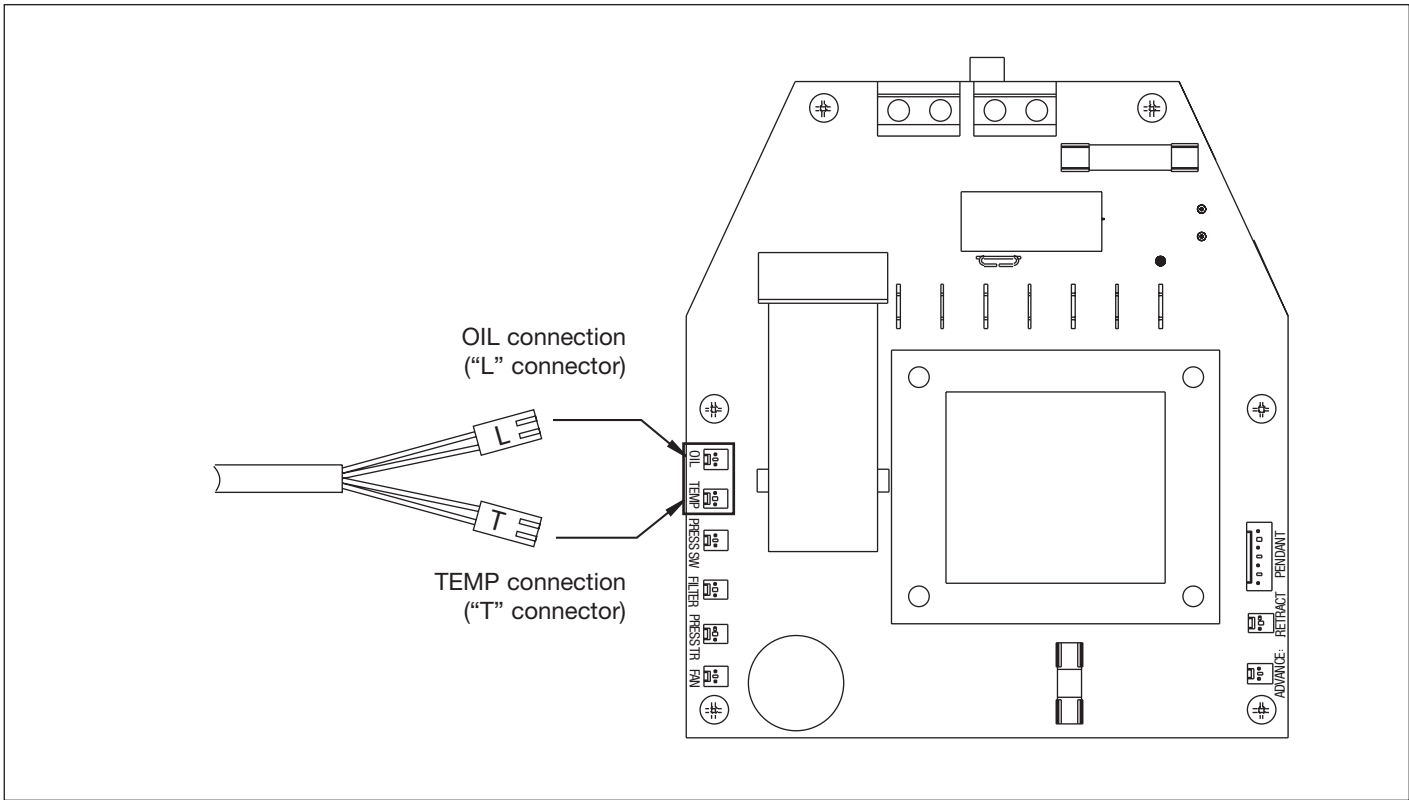


Figure 2, Power Board Connections

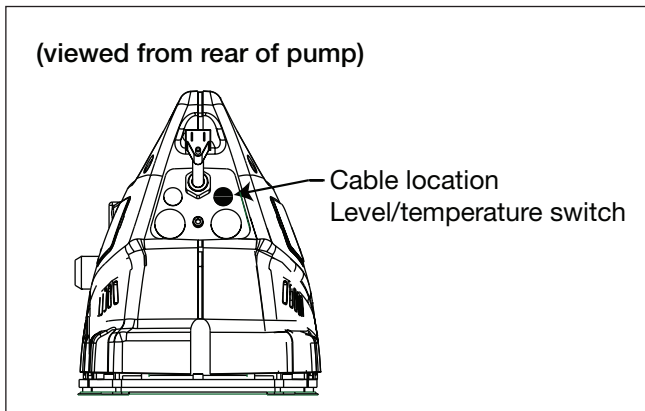


Figure 3, Cable Routing Location, ZU Series Pumps

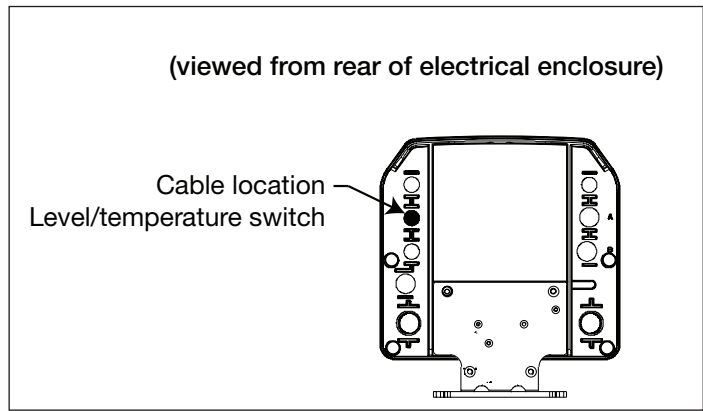


Figure 4, Cable Routing Location, ZE and ZW Series Pumps

INSTALLATION INSTRUCTIONS

⚠ WARNING Before beginning switch installation or replacement procedures, disconnect pump from electrical power source. Be sure that hydraulic pressure is completely relieved (0 psi/bar). Failure to observe these precautions could result in death or serious personal injury.

NOTICE

- The level/temperature switch can be installed only on ZU, ZE and ZW Series pumps equipped with the LCD electric package. The pump must also be equipped with a 10, 20 or 40 liter reservoir.
- Disassembly and reassembly details will vary, depending on pump model. Refer to the pump repair parts sheet for exploded view parts diagrams.

1.0 Level/Temperature Switch Installation (all models)

Refer to Figure 1 during the following steps.

1. Disconnect pump from electrical power source. Be sure that hydraulic pressure is completely relieved (0 psi/bar).
2. Remove the oil drain plug and drain all oil from the reservoir. Refer to the pump instruction sheet for detailed oil draining instructions.
3. Pass the float-end of the level/temperature switch through the reservoir drain hole.
4. Tighten the switch housing until no threads remain visible from the outside and the arrow on the switch points downward.
5. To complete the installation procedure, refer to additional instructions in section 2.0 or 3.0 of this manual (as applicable for your pump model).

2.0 Cable Installation and Electrical Connections - ZU Series Pumps

Refer to figures as indicated during the following steps.

1. Disconnect pump from electrical power source. Be sure that hydraulic pressure is completely relieved (0 psi/bar).
2. Using a 5 mm (3/16") Allen wrench, remove the nine capscrews and flat washers fastening the shroud halves to each other and to the pump cover plate. Remove the shroud halves from the pump.
3. Remove the small hole plug from the right side of the pump rear bracket. (see Fig. 3).
4. Route the level/temperature switch cable through the hole in the rear bracket. Note that the cable bushing comes pre-assembled on the cable.
5. Slide the plastic locking nut over the cable and thread it onto the cable bushing (see Fig. 1). Tighten the locking nut only until snug - do not overtighten. The nut may crack if it is overtightened.

6. At the pump power board, remove the insulation tubes from the OIL and TEMP connections (see Fig. 2).

NOTICE The level/temperature switch cable contains two connectors, one labeled "L" and the other labeled "T".

7. Gently plug the connector labeled "L" into the OIL connection on the power board (see Fig. 2).
8. Gently plug the connector labeled "T" into the TEMP connection on the power board (see Fig. 2).
9. Reinstall the shroud halves on the pump. Secure with nine flat washers and capscrews.
10. Refill the reservoir with hydraulic oil. Refer to pump instruction sheet for oil fill procedure.
11. Test pump for proper operation. Check for oil leaks.

3.0 Cable Installation and Electrical Connections - ZE and ZW Series Pumps

Refer to figures as indicated during the following steps.

1. Disconnect pump from electrical power source. Be sure that hydraulic pressure is completely relieved (0 psi/bar).
2. Using a 5 mm (3/16") Allen wrench, remove the six capscrews and flat washers securing the cover to the electrical enclosure. Remove the cover from the enclosure.
3. At the rear of the electrical enclosure, remove the plug covering the hole for the level/temperature switch cable (see Fig. 4).
4. Route the level/temperature switch cable through the hole in the electrical enclosure. Note that the cable bushing comes pre-assembled on the cable.
5. Slide the plastic locking nut over the cable and thread it onto the cable bushing (see Fig. 1). Tighten the locking nut only until snug - do not overtighten. The nut may crack if it is overtightened.
6. At the pump power board, remove the insulation tubes from the OIL and TEMP connections (see Fig. 2).

NOTICE The level/temperature switch cable contains two connectors, one labeled "L" and the other labeled "T".

7. Gently plug the connector labeled "L" into the OIL connection on the power board (see Fig. 2).
8. Gently plug the connector labeled "T" into the TEMP connection on the power board (see Fig. 2).
9. Reinstall the cover on the electrical enclosure. Secure with six flat washers and capscrews.
10. Refill the reservoir with hydraulic oil. Refer to pump instruction sheet for oil fill procedure.
11. Test pump for proper operation. Check for oil leaks.

Enerpac Worldwide Locations

◆ e-mail: info@enerpac.com

◆ internet: www.enerpac.com

Australia and New Zealand

Actuant Australia Ltd.
P.O. Box 6867
Wetherhill Park, NSW1851
Block V Unit 3
Regents Park Estate
391 Park Road
Regents Park NSW 2143
Australia
T +61 287 177 200
F +61 297 438 648
sales-au@enerpac.com

Brazil

Power Packer do Brasil Ltda.
Rua Luiz Lawrie Reid, 548
09930-760 - Diadema (SP) - Brazil
T +55 11 5687 2211
Toll Free: 0800 891 5770
vendasbrasil@enerpac.com

China (Taicang)

Actuant (China) Industries Co. Ltd.
No. 6 Nanjing East Road,
Taicang Economic Dep Zone
Jiangsu, China
T +86 0512 5328 7500
F +86 0512 5335 9690
Toll Free: +86 400 885 0369
sales-cn@enerpac.com

France, Switzerland, North Africa and French speaking African countries

ENERPAC
Une division d'ACTUANT France S.A.S.
ZA de Courtaboeuf
32, avenue de la Baltique
91140 VILLEBON /YVETTE
France
T +33 1 60 13 68 68
F +33 1 69 20 37 50
sales-fr@enerpac.com

Germany and Austria

ENERPAC GmbH
P.O. Box 300113
D-40401 Düsseldorf
Willstätterstrasse 13
D-40549 Düsseldorf, Germany
T +49 211 471 490
F +49 211 471 49 28
sales-de@enerpac.com

India

ENERPAC Hydraulics (India) Pvt. Ltd.
No. 10, Bellary Road, Sadashivanagar,
Bangalore, Karnataka 560 080
India
T +91 80 3928 9000
info@enerpac.co.in
www.enerpac.com

Italy

ENERPAC S.p.A.
Via Canova 4
20094 Corsico (Milano)
T +39 02 4861 111
F +39 02 4860 1288
sales-it@enerpac.com

Japan

Applied Power Japan LTD KK
Besshocho 85-7
Kita-ku, Saitama-shi 331-0821, Japan
T +81 48 662 4911
F +81 48 662 4955
sales-jp@enerpac.com

Middle East, Egypt and Libya

ENERPAC Middle East FZE
Office 423, LOB 15
P.O. Box 18004, Jebel Ali, Dubai
United Arab Emirates
T +971 (0)4 8872686
F +971 (0)4 8872687
sales-ua@enerpac.com

Russia

Rep. office Enerpac
Russian Federation
Admirala Makarova Street 8
125212 Moscow, Russia
T +7 495 98090 91
F +7 495 98090 92
sales-ru@enerpac.com

Southeast Asia, Hong Kong and Taiwan

Actuant Asia Pte Ltd.
83 Joo Koon Circle
Singapore 629109
T +65 68 63 0611
F +65 64 84 5669
Toll Free: +1800 363 7722
sales-sg@enerpac.com

South Korea

Actuant Korea Ltd.
3Ba 717, Shihwa Industrial Complex
Jungwang-Dong, Shihung-Shi,
Kyunggi-Do
Republic of Korea 429-450
T +82 31 434 4506
F +82 31 434 4507
sales-kr@enerpac.com

Spain and Portugal

ENERPAC SPAIN, S.L.
Avda. Los Frailes, 40 - Nave C & D
Pol. Ind. Los Frailes
28814 Daganzo de Arriba
(Madrid) Spain
T +34 91 884 86 06
F +34 91 884 86 11
sales-es@enerpac.com

Sweden, Denmark, Norway,

Finland and Iceland
Enerpac Scandinavia AB
Kopparlundsvägen 14,
721 30 Västerås
Sweden
T +46 (0) 771 41 50 00
scandinavianinquiries@enerpac.com

The Netherlands, Belgium, Luxembourg, Central and Eastern Europe, Baltic States, Greece, Turkey and CIS countries

ENERPAC B.V.
Galvanistraat 115, 6716 AE Ede
P.O. Box 8097, 6710 AB Ede
The Netherlands
T +31 318 535 911
F +31 318 535 848
sales-nl@enerpac.com

Enerpac Integrated Solutions B.V.

Spinelstraat 15, 7554 TS Hengelo
P.O. Box 421, 7550 AK Hengelo
The Netherlands
T +31 74 242 20 45
F +31 74 243 03 38
integratedsolutions@enerpac.com

South Africa and other English speaking African countries

Enerpac Africa Pty Ltd.
No. 5 Bauhinia Avenue
Cambridge Office Park
Block E
Highveld Techno Park
Centurion 0157
Republic of South Africa
T: +27 12 940 0656
sales-za@enerpac.com

United Kingdom and Ireland

ENERPAC UK Ltd.
5 Coopies Field
Morpeth, Northumberland
NE61 6JR, England
T +44 1670 5010 00
sales-uk@enerpac.com

USA, Latin America and Caribbean

ENERPAC World Headquarters
P.O. Box 3241
Milwaukee WI 53201-3241 USA
N86 W12500 Westbrook Crossing
Menomonee Falls, Wisconsin 53051
T +1 262 293 1600
F +1 262 293 7036
User inquiries:
T +1 800 433 2766
Distributor inquiries/orders:
T +1 800 558 0530
F +1 800 628 0490
Technical inquiries:
techservices@enerpac.com
sales-us@enerpac.com

All Enerpac products are
guaranteed against defects
in workmanship and materials
for as long as you own them.

For the location of your nearest
authorized Enerpac Service Center,
visit us at www.enerpac.com

030316