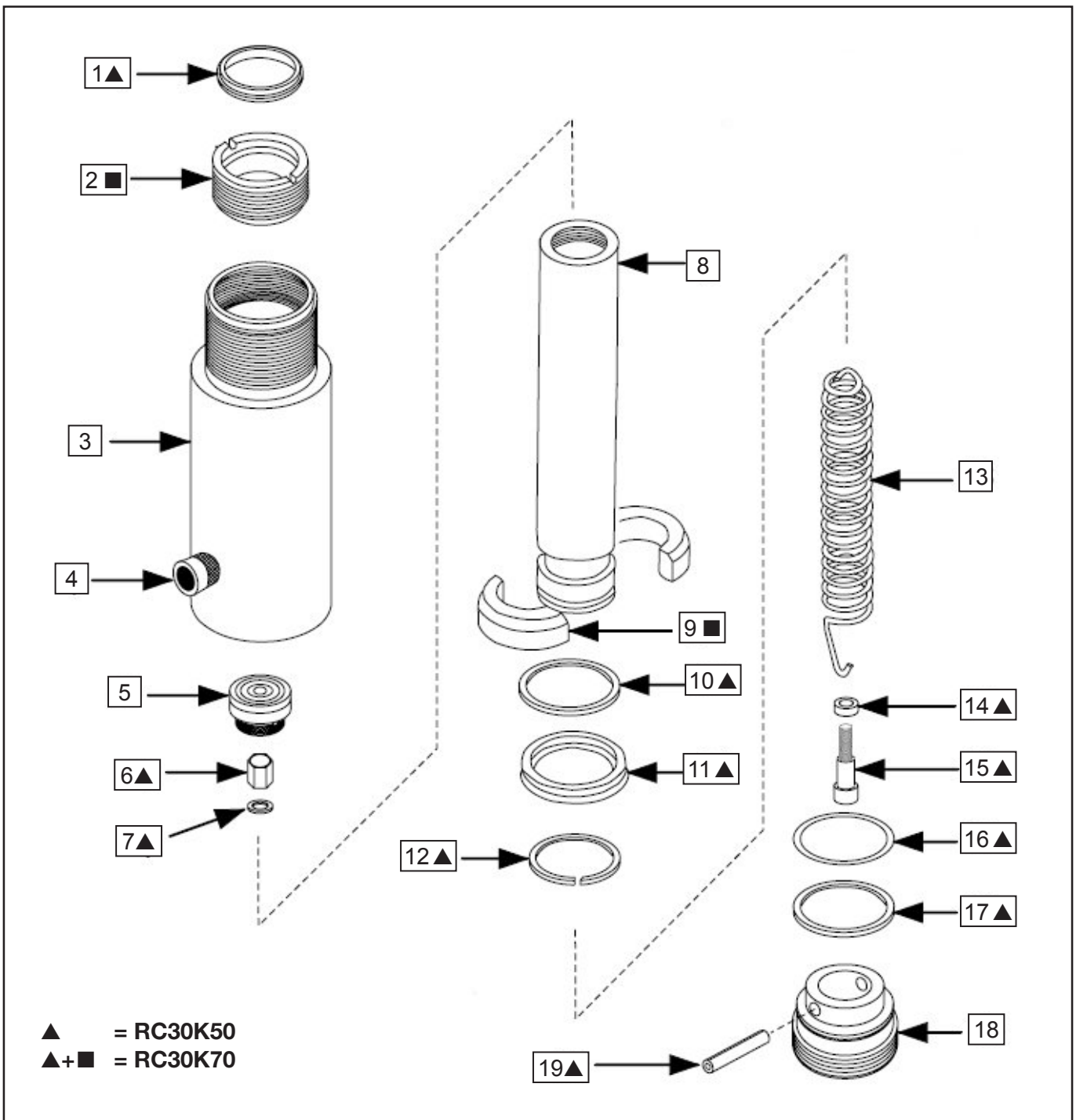


Repair Parts Sheet	Revision	Revision Date	Product Code Beginning
Reference nr. L2805	Rev.A	02/2009	0&A



# Repair Parts List

**L 2805**

Item nr.	Qty.	Description	Part Number
1	1	Wiper ring	▲
2	1	Stop ring	■
3	1	Base	Not a service item, order complete cylinder
4	1	Coupler	CR400
5	1	Saddle	A252G
6	1	Nut	▲
7	1	Gasket	▲
8	1	Plunger	Not a service item, order complete cylinder
9	1	Bearing	■
10	1	Washer	▲
11	1	U Cup	▲
12	1	Retaining ring	▲
13	1	Spring ( incl. item 6,7,14,15)	G903110SR
14	1	Spacer	▲
15	1	Screw	▲
16	1	O Ring	▲
17	1	Back up ring	▲
18	1	End cap	F571020
19	1	Pin	▲
20	1	Coupler O ring (not shown)	▲
21	1	Enerpac Decal (not shown.)	▲
22	1	Caution decal (not shown)	▲
23	1	Thread protector (not shown)	▲
24	1	Dust cap (not shown)	▲
25	1	Saddle O ring (not shown)	▲

▲ = Items included in and available only as part of repair kit RC30K50.

■ = Items included in and available only as part of repair kit RC30K70, RC30K70 incl. 1x RC30K50.

For viton seals use repair kit RC308KV together with repair kit RC30K50.



Item nr.	Torque / notes
2	Use Loctite 222
4	34 - 81 Nm 25 - 60 ft lbs
4	Use Loctite 545 or Teflon tape
6	11 - 14 Nm 8 - 10 ft lbs
10	Washer to be placed with sharp edge towards U Cup
15	Firmly tighten screw to assure secure contact with plunger
18	Use Loctite 222



**To maintain your warranty,  
have your products inspected and repaired  
by an authorised Enerpac Service Centre**

[www.enerpac.com](http://www.enerpac.com)