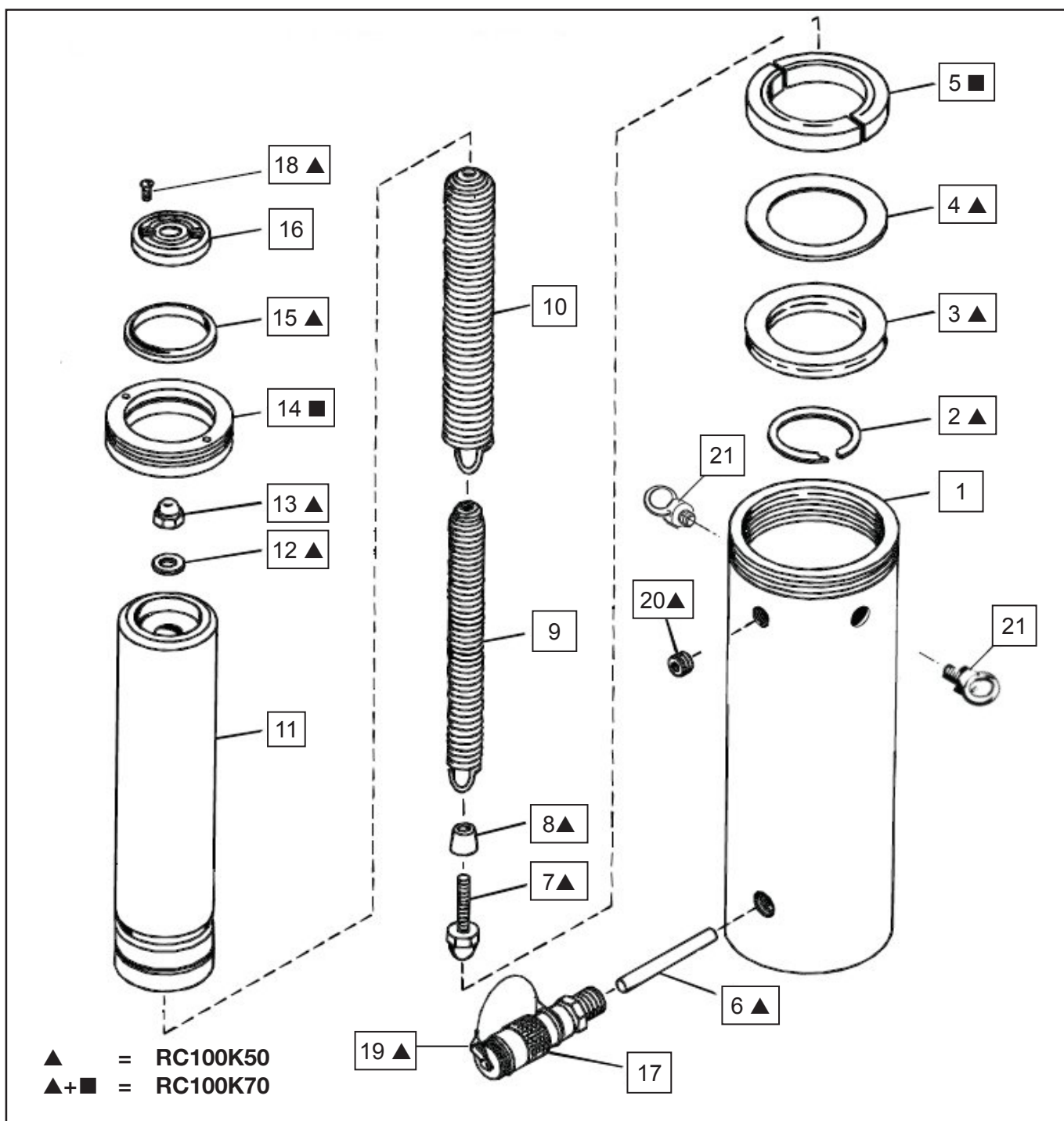


Repair Parts Sheet	Revision	Revision Date	Product Code Beginning
Reference nr. L2808	Rev.A	02/2009	B



Repair Parts List				L 2808
Item nr.	Qty.	Description	RC1006	RC10010
1	1	Cylinder	Not available as service item, order new cylinder	
2	1	Retaining Ring	▲	▲
3	1	U Cup	▲	▲
4	1	Washer	▲	▲
5	1	Bearing	■	■
6	1	Spring Pin	▲	▲
7	1	Set Screw & Cap Nut Assy	▲	▲
8	1	Bushing	▲	▲
9	1	Spring (incl. item 7,8,12,13)	M73110SR	M681110SR
10	1	Spring (incl. item 7,8, 12,13)	M72110SR	M67110SR
11	1	Plunger	CK142040	CK147040
12	1	Gasket	▲	▲
13	1	Nut	▲	▲
14	1	Stop Ring	■	■
15	1	Wiper Ring	▲	▲
16	1	Saddle (includes item 18)	L345045SR	L345045SR
17	1	Coupler	CR400	CR400
18	2	Cap Screw	▲	▲
19	1	Dust cap	▲	▲
20	2	Plug 3/8" NPTF	▲	▲
21	2	Eye bolt	BSS6350D	BSS6350D
22	1	Coupler O ring (not shown)	▲	▲
23	1	Enerpac Decal (not shown)	▲	▲
24	1	Warning Decal (not shown)	▲	▲
25	1	Thread protector (not shown)	▲	▲

▲ = Items are included in and available only as part of repair kit RC100K50.

■ = Items are included in and available only as part of repair kit RC100K70. RC100K70 includes 1x RC100K50.



Item nr.	Torque / Remarks
4	Washer to be placed with sharp edge towards U Cup
7	Firmly tighten screw to assure contact with plunger.
9	45 - 54 Nm 33 - 40 ft lbs
14	Secure with Loctite 222
17	34 - 81 Nm 25 - 60 ft lbs
17	Use teflon tape or Loctite 545
20	34 - 81 Nm 25 - 60 ft lbs
20	Use teflon tape or Loctite 545



**To maintain your warranty,
have your products inspected and repaired
by an authorised Enerpac Service Centre**

www.enerpac.com