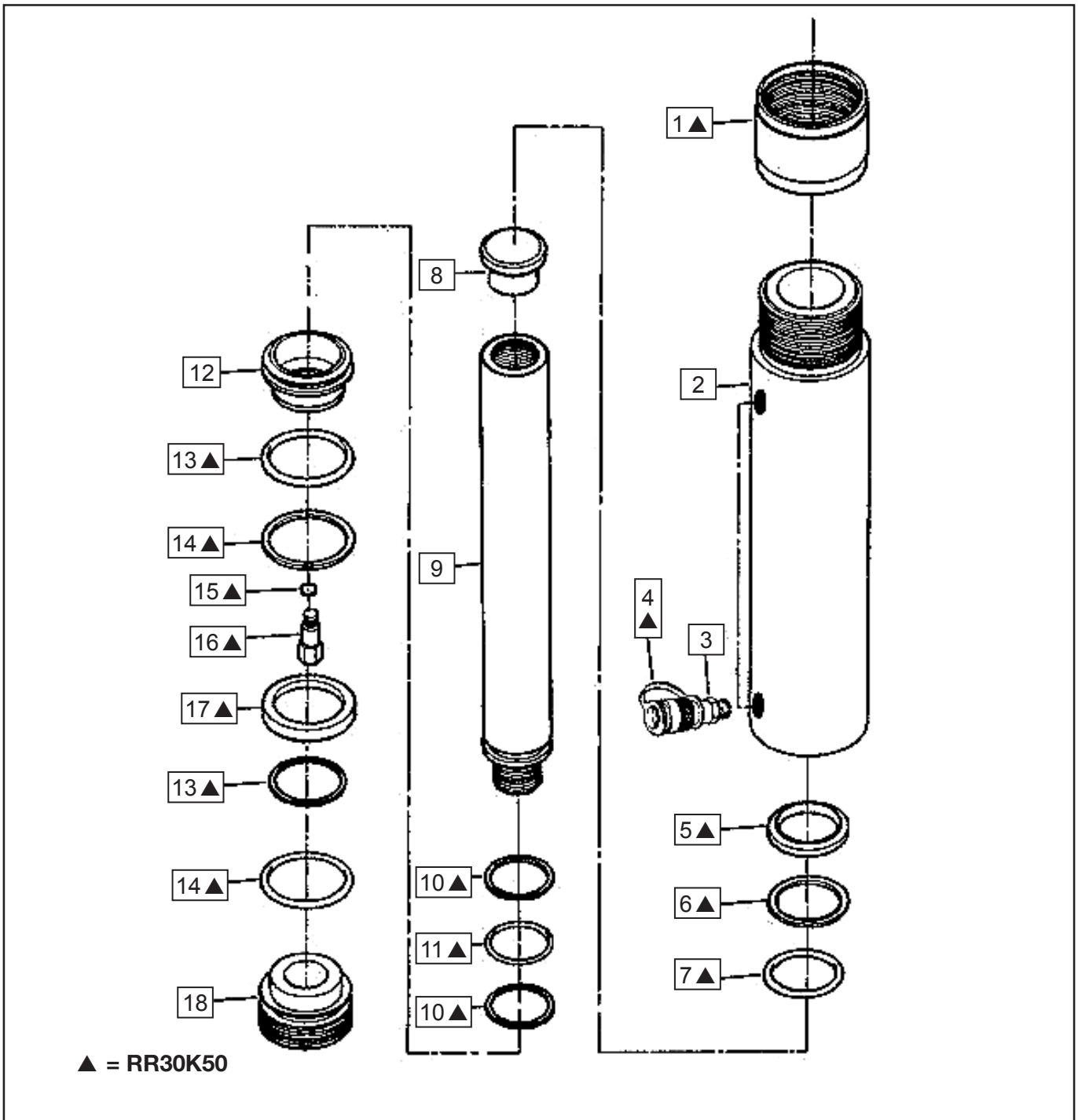


Repair Parts Sheet	Revision	Revision Date	Product Code Beginning
Reference nr. L2817	Rev.A	04/2009	D (RR308) O (RR3014)



Repair Parts list				L 2817	
Item	Description	Qty.	RR308	RR3014	
1	Thread protector	1	▲	▲	
2	Base	1	Not available, order new cylinder		
3	Coupler	2	CR400	CR400	
4	Dust cap	2	▲	▲	
5	Wiper	1	▲	▲	
6	Back up washer	1	▲	▲	
7	O Ring	1	▲	▲	
8	Saddle	1	A252G	A252G	
9	Plunger	1	Not available, order new cylinder		
10	Back up washer	2	▲	▲	
11	O Ring	1	▲	▲	
12	Piston	1	Not available, order new cylinder		
13	O Ring	2	▲	▲	
14	Back up washer	2	▲	▲	
15	Gasket	1	▲	▲	
16	Relief Valve Assembly	1	▲	▲	
17	U Cup	1	▲	▲	
18	End cap	1	Not available, order new cylinder		
19	Coupler O ring (not show)	2	▲	▲	
20	Warning Decall (not shown)	1	▲	▲	
21	Enerpac Decall (not shown)	2	▲	▲	

▲ = Indicated parts are only available in repair kit RR30K50



Item nr.	Torque / Remarks
3	34 - 81 Nm 25 - 60 ft lbs
3	Use teflon tape or Loctite 545
12	Assure contact with shoulder
12	Secure to item 9 by staking thread in 3 places
18	Assure contact with shoulder
18	Secure with Loctite 222



To maintain your warranty,  
have your products inspected and repaired  
by an authorised Enerpac Service Centre

[www.enerpac.com](http://www.enerpac.com)