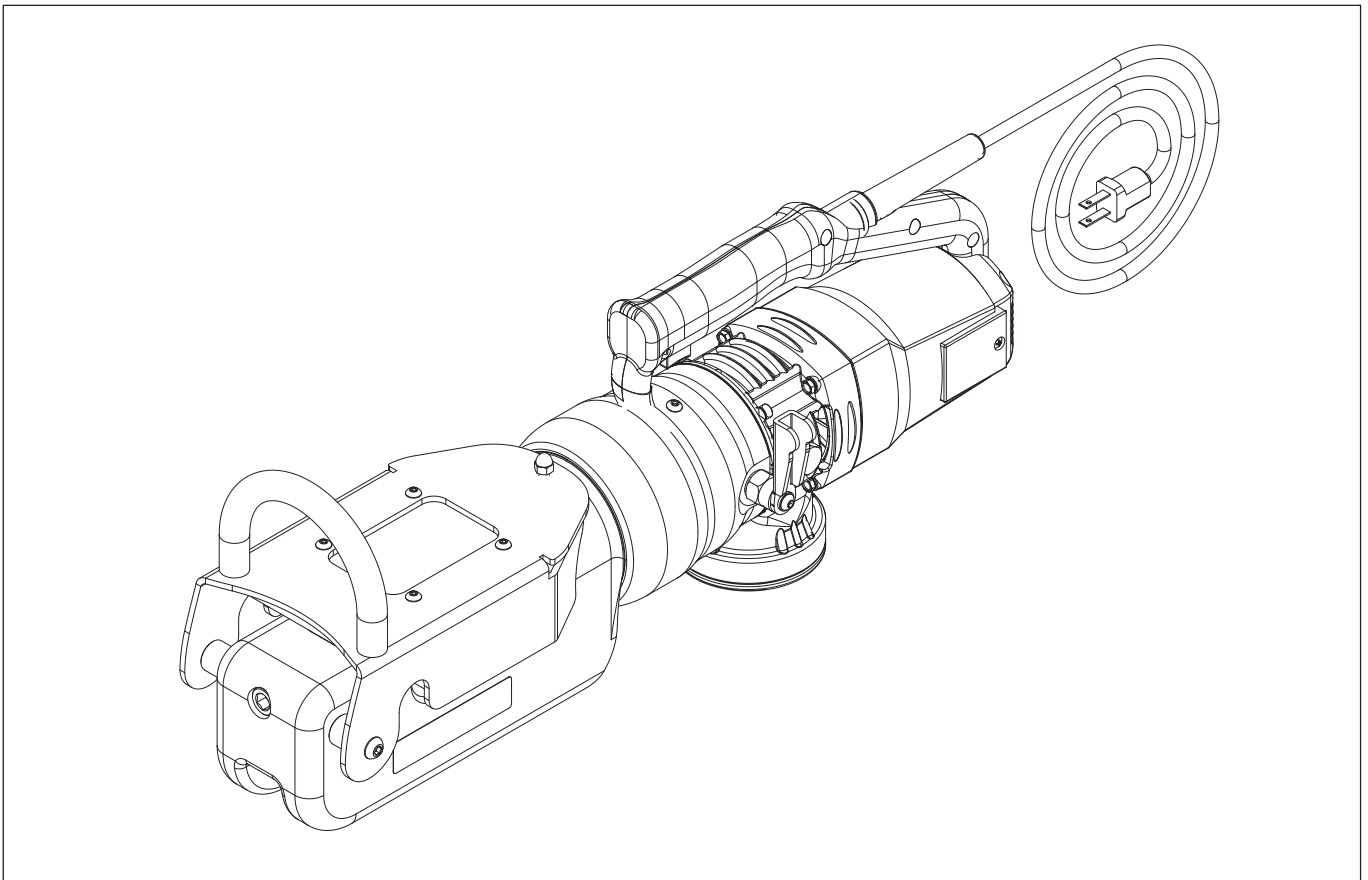


Document Number	Document Revision	Document Revision Date	Product Date Code Beginning With
L4333	E	09/2021	A, B

**To Protect Your Warranty, Use Only ENERPAC Hydraulic Oil.**

Enerpac recommends that all kit components be installed to insure optimum performance of the repaired product.



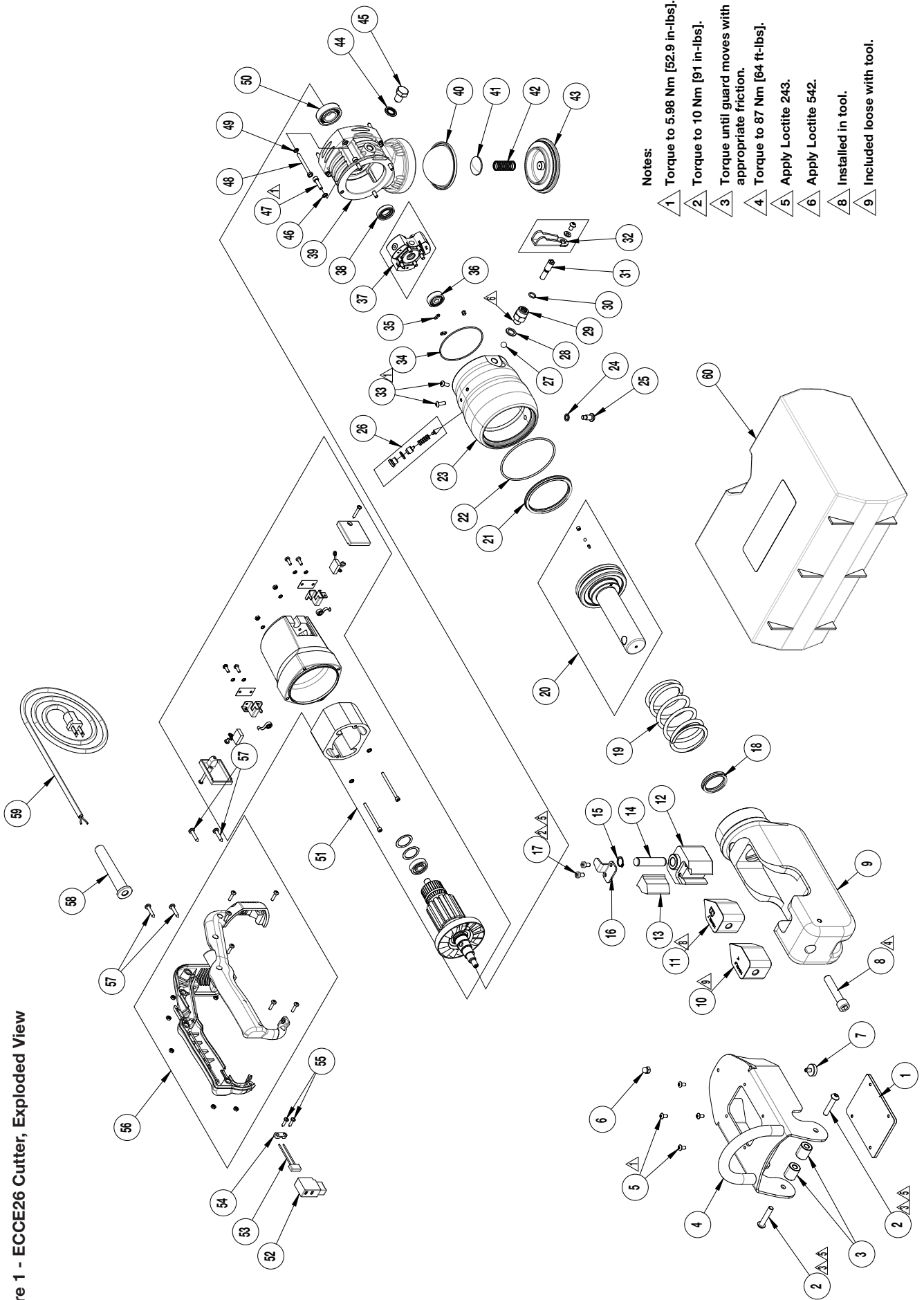
**Table of Contents:**

	Page		Page
Figure 1 - ECCE26 Cutter, Exploded View	2	Figure 11 - ECCE2613K Pump Kit	8
Figure 2 - ECCE2601 -K, -AK, & -BK Blade Kits	4	Figure 12 - ECCE2612K Cylinder Spring Kit	8
Figure 3 - ECCE2605K Guard Kit	4	Figure 13 - ECCE2604K and ECCE2619K Handle Kit	9
Figure 4 - ECCE2606K Guard Window Kit	5	Figure 14 - ECCE2603K Switch Kit	9
Figure 5 - ECCE2611K Blade Holder Kit	5	Figure 15 - ECCE2617K Bearing Kit	10
Figure 6 - ECCE2610K Head Kit	6	Figure 16 - ECCE2614K and ECCE2620K Rotor Kit	10
Figure 7 - ECCE2607K Piston Kit	6	Figure 17 - EBE2222K and EBE2215K Brush Kit	10
Figure 8 - ECCE2608K Cylinder Body Kit	6	Figure 18 - ECCE2615K and ECCE2621K Motor Kit	11
Figure 9 - ECCE2609K Release Valve Kit	7	Figure 19 - ECCE2618K Small Parts Kit	12
Figure 10 - ECCE2602K Seal Kit	7	Figure 20 - DKSCOMP Decal Kit	12

**⚠ WARNING** Be certain that cutter is disconnected from AC power supply before beginning any adjustment, maintenance or repair procedures. Appropriate shop safety procedures are to be followed during disassembly and reassembly to minimize any possibility of injury.

**Note:** Parts kits, components and product features described in this document are subject to change without notice.

Figure 1 - ECCE26 Cutter, Exploded View



Notes:

- 1 Torque to 5.98 Nm [52.9 in-lbs].
- 2 Torque to 10 Nm [91 in-lbs].
- 3 Torque until guard moves with appropriate friction.
- 4 Torque to 87 Nm [64 ft-lbs].
- 5 Apply Loctite 243.
- 6 Apply Loctite 542.
- 8 Installed in tool.
- 9 Included loose with tool.

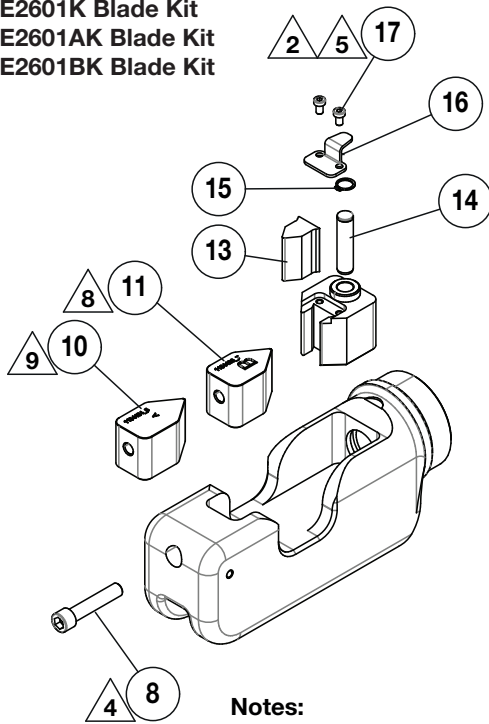
Repair Parts List for Figure 1		
Item No.	Qty.	Description
1	1	Transparent Screen
2	2	Button Screw M8 x 40 UNI 7380 Zn
3	2	Spacer Sleeve
4	1	Handle Assembly
5	4	Button Screw M5 x 10 10.9 UNI 7380 Zn
6	1	Cap Nut M6 x 10 Brass
7	1	Fitting Bolt
8	1	Socket Cap Screw M12 x 60 UNI 5931 Zn
9	1	Head
10	1	Fixed Blade (Long Version)
11	1	Fixed Blade (Short Version)
12	1	Moving Blade Support
13	1	Moving Blade
14	1	Positioning Pin
15	1	Seeger Ring
16	1	Blade Holder
17	2	Socket Cap Screw M6 x 10 UNI 5931 Zn
18	1	Gasket 4436
19	1	Spring F.6 x e67 x 5.5 x Lo107 Rounded
20	1	Piston Assembly
21	1	Seal M5 8575
22	1	O-Ring 94.92 x 2.62
23	1	Cylinder
24	1	Flat Washer 8 x 12 x 1.4 Copper
25	1	Positioning Screw
26	1	Relief Valve
27	1	Ball 3/8 D. 9.5
28	1	Flat Washer 12 x 18 x 1.5 Copper
29	1	Valve Body
30	1	O-Ring 9.25 x 1.78
31	1	Pin Valve
32	1	Lever Assembly
33	2	Button Screw M5x14 UNI 7380 Zn
34	1	O-Ring 75.92 x 1.78
35	3	O-Ring 6.07 x 1.78
36	1	Bearing 28 x 8 x 9

Repair Parts List for Figure 1 (continued)		
Item No.	Qty.	Description
37	1	Pump Assembly TC26
38	1	Oil Seal 17 x 30 x 7
39	1	Tank
40	1	Diaphragm
41	1	Diaphragm Pusher
42	1	Spring D.1.2 x e16 x 9 x Lo35 Rounded
43	1	Diaphragm Housing Lid
44	1	Bonded Seal Washer 1/4"
45	1	Magnetic Filter
46	4	Schnorr Washer M5 Zn
47	4	Socket Cap Screw M5 x 20 UNI 5931 Zn
48	4	Pan Head Screw D.4.8 x 50 UNI 7976
49	4	Grower Washer M5 UNI 1751 Zn
50	1	Bearing 42 x 20 x 12
51	1	Motor Assembly
52	1	Switch, Pushbutton
53	1	Interference Filter
54	1	Strain Relief Clamp
55	2	Pan Head Screw 3.9 x 16 UNI 6954 Zn
56	1	Handle Assembly (see figure 14)
57	4	Pan Head Screw 4.8 x 25 UNI 6954 Zn
58	1	Grommet Sleeve
59	1	Power Supply Cable With Plug
60	1	Hard Case

**Note:** Refer to Figures 2 through 20 for repair kit parts diagrams and additional information.

**Figure 2 - Blade Kits**

- ECCE2601K Blade Kit
- ECCE2601AK Blade Kit
- ECCE2601BK Blade Kit



**Notes:**

- 2 Torque to 10 Nm [91 in-lbs].
- 4 Torque to 87 Nm [64 ft-lbs].
- 5 Apply Loctite 243.
- 8 Installed in tool.
- 9 Included loose with tool.

**Parts List for Figure 2 - ECCE2601K Blade Kit**

Item No.	Qty.	Description
8	1	Socket Cap Screw M12 x 60 UNI 5931 Zn
10	1	Fixed Blade (Long Version)
11	1	Fixed Blade (Short Version)
13	1	Moving Blade
14	1	Positioning Pin
15	1	Seeger Ring
16	1	Blade Holder
17	2	Socket Cap Screw M6 x 10 UNI 5931 Zn

**Note:** Kit parts available only in kits. Items not sold separately.

**Parts List for Figure 2 - ECCE2601AK Blade Kit**

Item No.	Qty.	Description
8	1	Socket Cap Screw M12 x 60 UNI 5931 Zn
10	1	Fixed Blade (Long Version)
13	1	Moving Blade
14	1	Positioning Pin
15	1	Seeger Ring
16	1	Blade Holder
17	2	Socket Cap Screw M6 x 10 UNI 5931 Zn

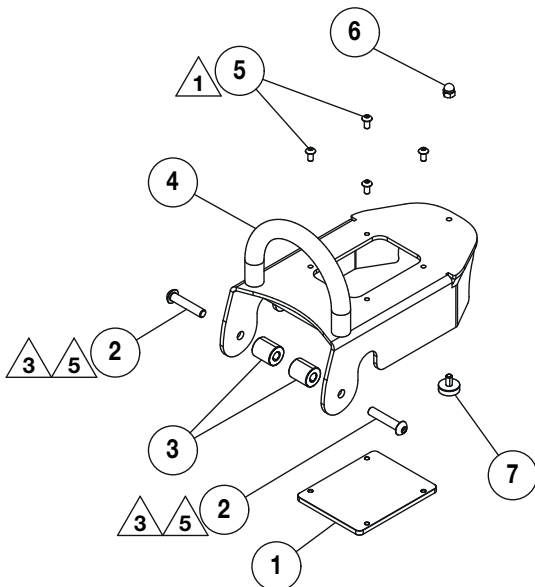
**Note:** Kit parts available only in kits. Items not sold separately.

**Parts List for Figure 2 - ECCE2601BK Blade Kit**

Item No.	Qty.	Description
8	1	Socket Cap Screw M12 x 60 UNI 5931 Zn
11	1	Fixed Blade (Short Version)
13	1	Moving Blade
14	1	Positioning Pin
15	1	Seeger Ring
16	1	Blade Holder
17	2	Socket Cap Screw M6 x 10 UNI 5931 Zn

**Note:** Kit parts available only in kits. Items not sold separately.

**Figure 3 - ECCE2605K Guard Kit**



**Notes:**

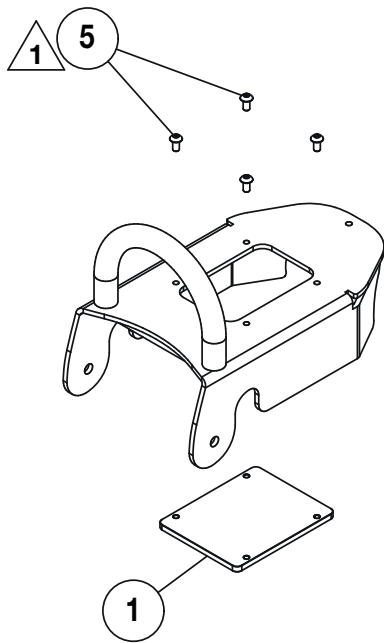
- 1 Torque to 5.98 Nm [52.9 in-lbs].
- 3 Torque until guard moves with appropriate friction.
- 5 Apply Loctite 243.

**Parts List for Figure 3**

Item No.	Qty.	Description
1	1	Transparent Screen
2	2	Button Screw M8 x 40 UNI 7380 Zn
3	2	Spacer Sleeve
4	1	Handle Assembly
5	4	Button Screw M5 x 10 10.9 UNI 7380 Zn
6	1	Cap Nut M6 x 10 brass
7	1	Fitting Bolt

**Note:** Kit parts available only in kits. Items not sold separately.

Figure 4 - ECCE2606K Guard Window Kit



Note:

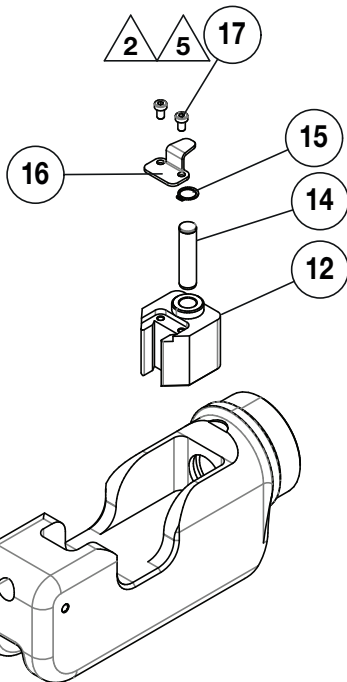
**1** Torque to 5.98 Nm [52.9 in-lbs].

Parts List for Figure 4

Item No.	Qty.	Description
1	1	Transparent Screen
5	4	Button Screw M5 x 10 10.9 UNI 7380 Zn

**Note:** Kit parts available only in kits. Items not sold separately.

Figure 5 - ECCE2611K Blade Holder Kit



Notes:

**2** Torque to 10 Nm [91 in-lbs].

**5** Apply Loctite 243.

Parts List for Figure 5

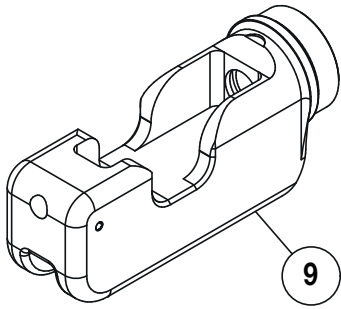
Item No.	Qty.	Description
12	1	Moving Blade Support
14	1	Positioning Pin
15	1	Seeger Ring
16	1	Blade Holder
17	2	Socket Cap Screw M6 x 10 UNI 5931 Zn

**Note:** Kit parts available only in kits. Items not sold separately.

**IMPORTANT:**  
TOOLS WITH DATE CODE "A"

**IF KIT ECCE2611K IS BEING REPLACED,  
KIT ECCE2607K (SEE FIGURE 7) MUST  
ALSO BE REPLACED AT THE SAME TIME.**

Figure 6 - ECCE2610K Head Kit

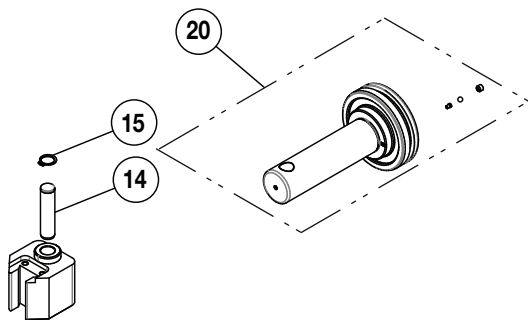


Parts List for Figure 6

Item No.	Qty.	Description
9	1	Head

**Note:** This kit contains only one item. (Item 9)

Figure 7 - ECCE2607K Piston Kit



Parts List for Figure 7

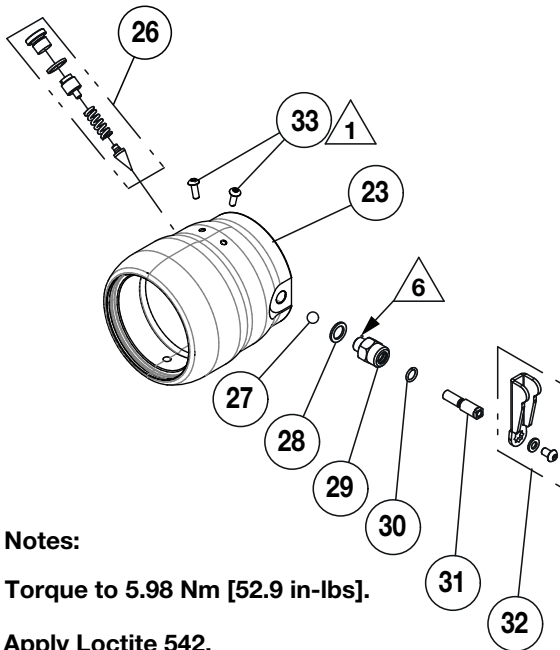
Item No.	Qty.	Description
14	1	Positioning Pin
15	1	Seeger Ring
20	1	Piston Assembly

**Note:** Kit parts available only in kits. Items not sold separately.

**IMPORTANT:  
TOOLS WITH DATE CODE "A"**

**IF KIT ECCE2607K IS BEING REPLACED,  
KIT ECCE2611K (SEE FIGURE 5) MUST  
ALSO BE REPLACED AT THE SAME TIME.**

Figure 8 - ECCE2608K Cylinder Body Kit



**Notes:**

**1** Torque to 5.98 Nm [52.9 in-lbs].

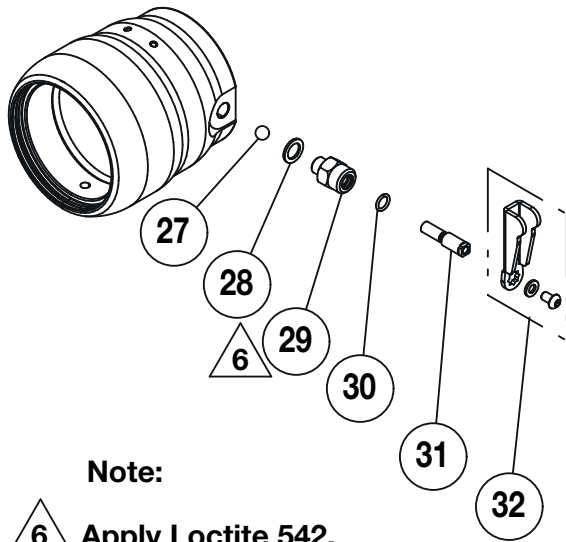
**6** Apply Loctite 542.

Parts List for Figure 8

Item No.	Qty.	Description
23	1	Cylinder
26	1	Relief Valve
27	1	Ball 3/8 D. 9.5
28	1	Flat Washer 12 x 18 x 1.5 Copper
29	1	Valve Body
30	1	O-Ring 9.25 x 1.78
31	1	Pin Valve
32	1	Lever Assembly
33	2	Button Screw M5 x 14 10.9 UNI 7380 Zn

**Note:** Kit parts available only in kits. Items not sold separately.

Figure 9 - ECCE2609K Release Valve Kit



Note:

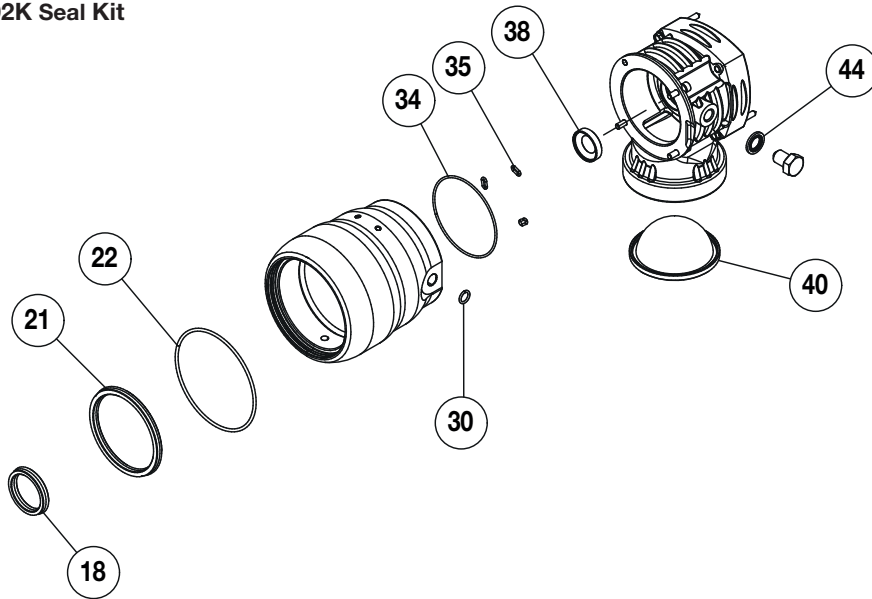
 Apply Loctite 542.

Parts List for Figure 9

Item No.	Qty.	Description
27	1	Ball 3/8 D. 9.5
28	1	Flat Washer 12 x 18 x 1.5 Copper
29	1	Valve Body
30	1	O-Ring 9.25 x 1.78
31	1	Pin Valve
32	1	Lever Assembly

Note: Kit parts available only in kits. Items not sold separately.

Figure 10 - ECCE2602K Seal Kit

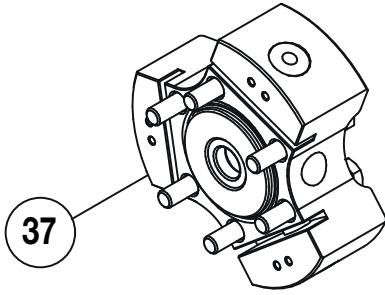


Parts List for Figure 10

Item No.	Qty.	Description
18	1	Gasket 4436
21	1	Seal M5 8575
22	1	O-Ring 94.92 x 2.62
30	1	O-Ring 9.25 x 1.78
34	1	O-Ring 75.92 x 1.78
35	3	O-Ring 6.07 x 1.78
38	1	Oil Seal 17 x 30 x 7
40	1	Diaphragm
44	1	Bonded Seal Washer 1/4"

Note: Kit parts available only in kits. Items not sold separately.

Figure 11 - ECCE2613K Pump Kit

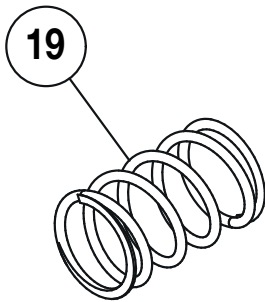


Parts List for Figure 11

Item No.	Qty.	Description
37	1	Pump assembly TC26

**Note:** This kit contains only one item. (Item 36)

Figure 12 - ECCE2612K Cylinder Spring Kit



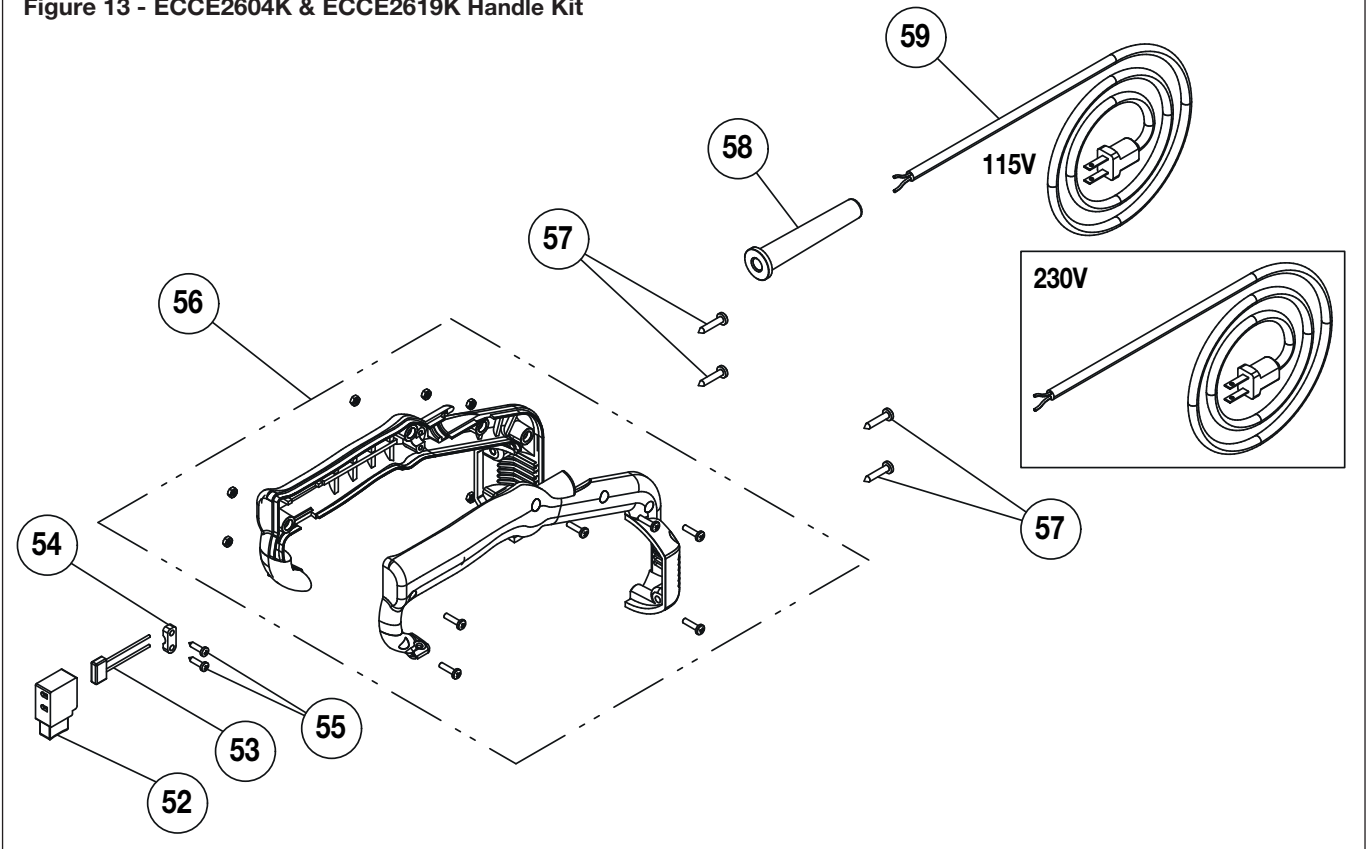
Parts List for Figure 12

Item No.	Qty.	Description
19	1	Spring F.6 x e67 x 5.5 x Lo107 Rounded

**Note:** This kit contains only one item. (Item 19)



Figure 13 - ECCE2604K & ECCE2619K Handle Kit



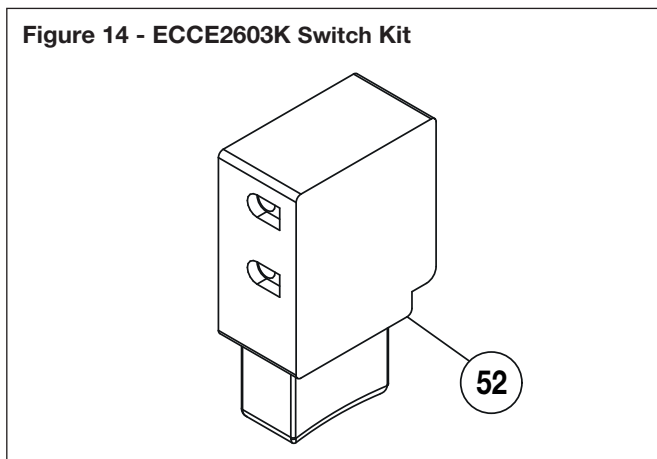
Parts List for Figure 13

Item No.	Qty.	Description
52	1	Switch, Pushbutton (see figure 14)
53	1	Interference Filter
54	1	Strain Relief Clamp
55	2	Pan Head Screw 3.9 x 16 UNI 6954 Zn
56	1	Handle Assembly
57	4	Pan Head Screw 4.8 x 25 UNI 6954 Zn
58	1	Grommet Sleeve
59	1	Power Supply Cable With Plug

**Notes:**

- Handle Kit ECCE2604K - Includes parts used on 115V cutter, Model ECCE26B.
- Handle Kit ECCE2619K - Includes parts used on 230V cutter, Model ECCE26E.
- Kit parts available only in kits. Items not sold separately.

Figure 14 - ECCE2603K Switch Kit

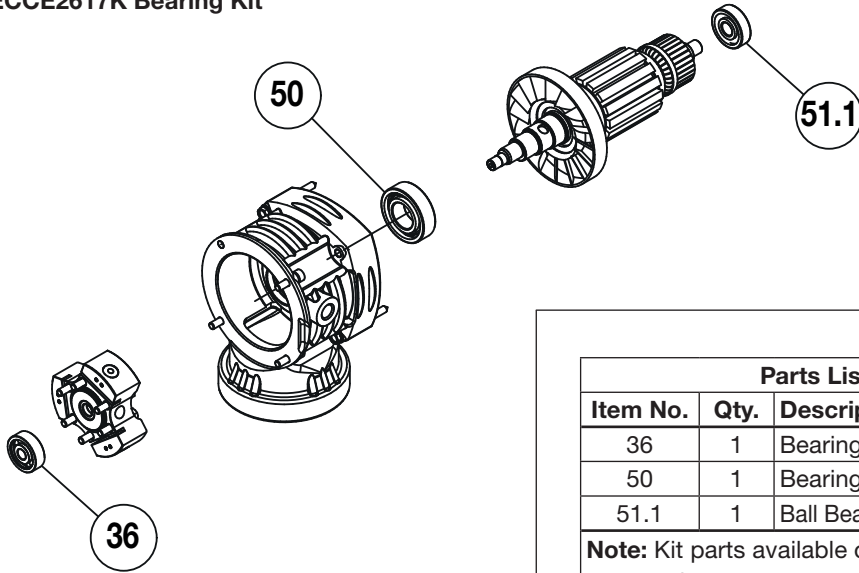


Parts List for Figure 14

Item No.	Qty.	Description
52	1	Switch, Pushbutton

**Note:** This kit contains only one item. (Item 51)

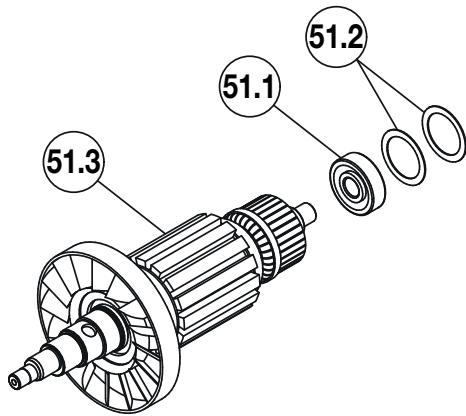
Figure 15 - ECCE2617K Bearing Kit



Parts List for Figure 15		
Item No.	Qty.	Description
36	1	Bearing 28 x 8 x 9
50	1	Bearing 42 x 20 x 12
51.1	1	Ball Bearing R-S 6200 30 x 10 x 9 ZZ C3

**Note:** Kit parts available only in kits. Items not sold separately.

Figure 16 - ECCE2614K & ECCE2620K Rotor Kit

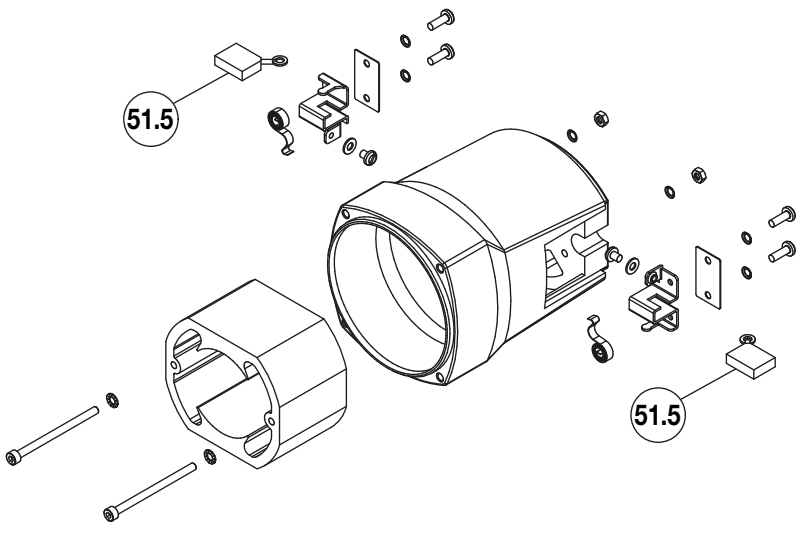


Parts List for Figure 16		
Item No.	Qty.	Description
51.1	1	Ball Bearing R-S 6200 30 x 10 x 9 ZZ C3
51.2	2	Compensating Ring 29,7 x 22,5 x 0,5
51.3	1	Rotor Assembly

**Notes:**

- Rotor Kit ECCE2620K - Includes parts for 115V cutter, Model ECCE26B.
- Rotor Kit ECCE2614K - Includes parts for 230V cutter, Model ECCE26E.
- Kit parts available only in kits. Items not sold separately.

Figure 17 - EBE2222K and EBE2215K Brush Kit

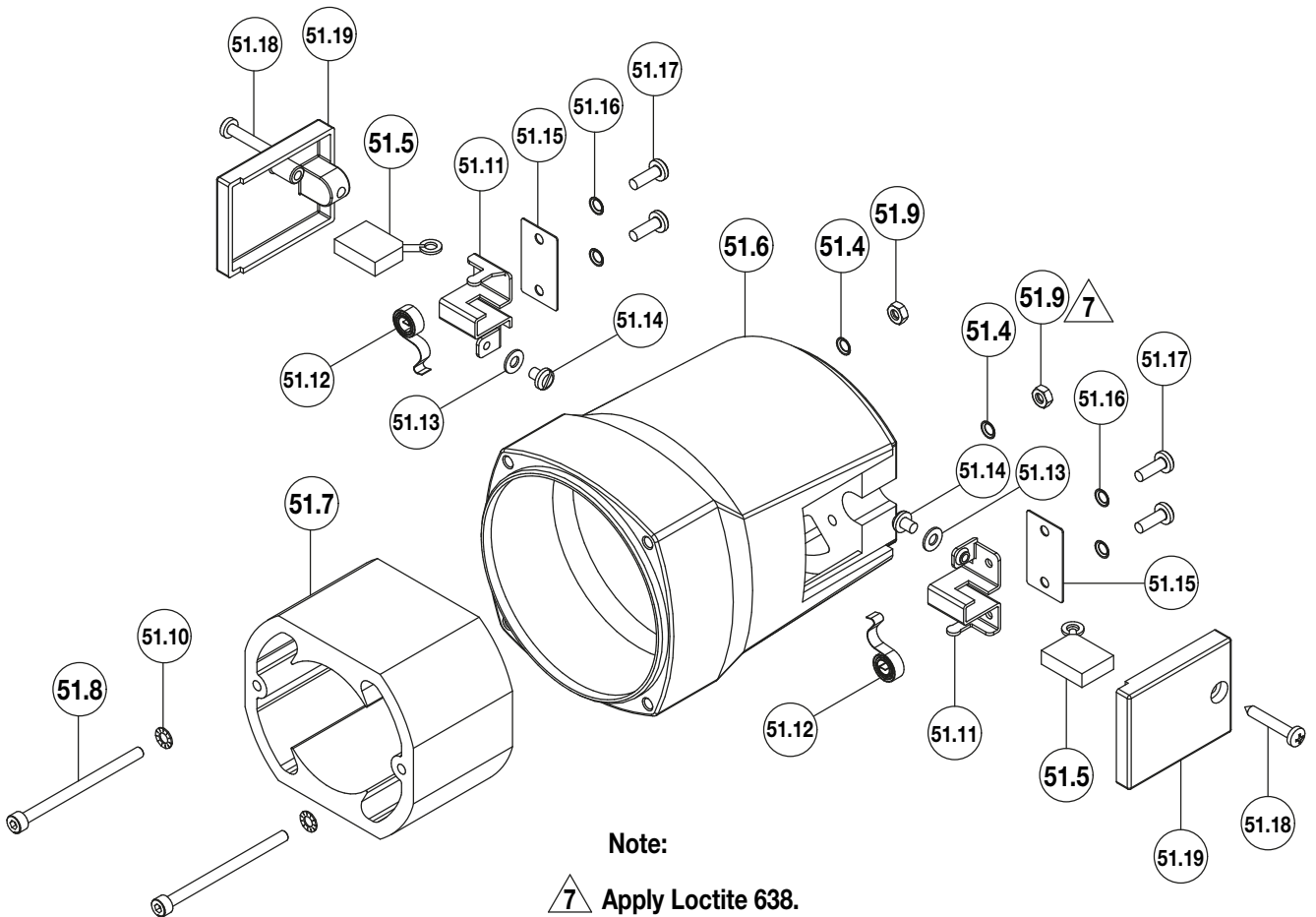


Parts List for Figure 17		
Item No.	Qty.	Description
51.5	2	Carbon Brush

**Notes:**

- Brush Kit EBE2222K - Includes brushes used on 115V cutter, Model ECCE26B.
- Brush Kit EBE2215K - Includes brushes used on 230V cutter, Model ECCE26E.
- Carbon brushes are different for 115V and 230V models. Be sure to order the correct kit for your cutter model.

Figure 18 - ECCE2615K & ECCE2621K Motor Kit



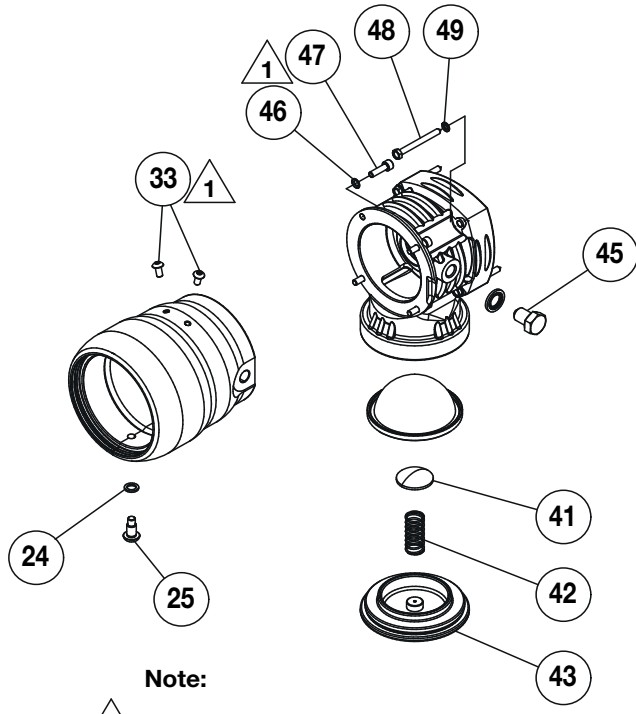
Parts List for Figure 18		
Item No.	Qty.	Description
51.4	2	Schnorr Washer M4 Zn
51.5	2	Carbon Brush
51.6	1	Motor Housing MU16
51.7	1	Stator MU16
51.8	2	Socket Cap Screw M4 x 60 UNI5931 Zn
51.9	2	Nut M4 UNI 5588 Zn
51.10	2	External Tooth Lock Washer D 4
51.11	1	Brush Support MU16
51.12	1	Brush Spring
51.13	1	Flat Washer M4 UNI 6592 Ot
51.14	1	Screw M4 x 5 UNI 6107 Ot
51.16	2	Schnorr Washer M4 Zn
51.15	1	Carrying Plate MU16 18 x 30 x 5/10

Parts List for Figure 18 (Continued)		
Item No.	Qty.	Description
51.17	2	Pan Head Screw M4 x 12 UNI 7985 Zn
51.18	1	Brush Cover
51.19	1	Pan Head Screw 3.9 x 25 UNI 6954 Zn

**Notes:**

- Motor Kit ECCE2621K - Includes parts used on 115V cutter, Model ECCE26B.
- Motor Kit ECCE2615K - Includes parts used on 230V cutter, Model ECCE26E.
- Carbon brush (item 51.5) and stator (item 51.7) are different for 115V and 230V models. Be sure to order the correct kit for your cutter model.
- Kit parts available only in kits. Items not sold separately.

Figure 19 - ECCE2618K Small Parts Kit



Note:

1 Torque to 5.98 Nm [52.9 in-lbs].

Parts List for Figure 19

Item No.	Qty.	Description
33	2	Button Screw M5 x 14 10.9 UNI 7380 Zn
24	1	Flat Washer 8 x 12 x 1.4 Copper
25	1	Positioning Screw
41	1	Diaphragm Pusher
42	1	Spring D.1.2 x e16 x 9 x Lo35 Rounded
43	1	Diaphragm Housing Lid
45	1	Magnetic Filter
46	4	Schnorr Washer M5 Zn
47	4	Socket Cap Screw M5 x 20 UNI 5931 Zn
48	4	Self Threading Screw D.4.8 x 50 UNI 7976 Stainless
49	4	Grower Washer M5 UNI 1751 Zn

Notes: Kit parts available only in kits. Items not sold separately.

Figure 20 - DKSCOMP Decal Kit

Notes:

- The decal kit contains decals used on many different cutter models.
- Replace only the decals used on your cutter. Discard the remaining decals in the kit.