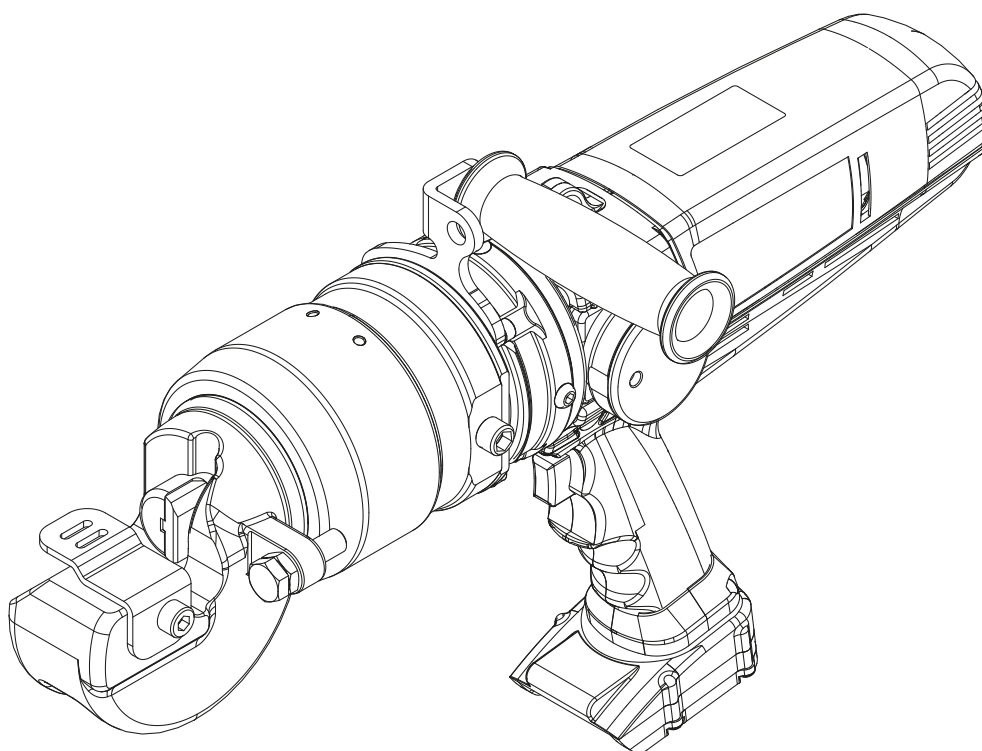


Document Number	Document Revision	Document Revision Date	Product Date Code Beginning With
L4342	D	02/2021	A

To Protect Your Warranty, Use Only ENERPAC Hydraulic Oil.

Enerpac recommends that all kit components be installed to insure optimum performance of the repaired product.

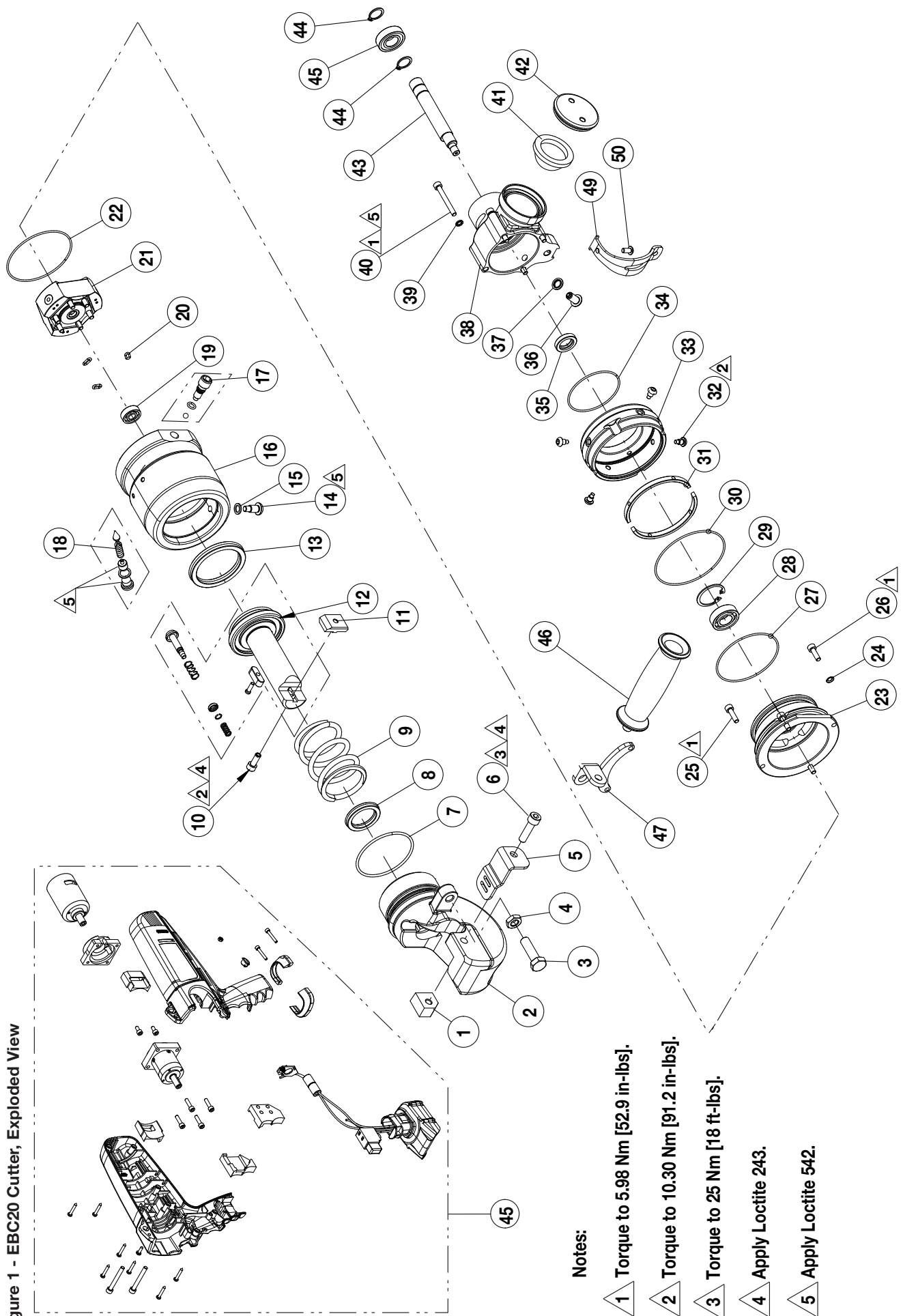
**Table of Contents:**

	Page		Page
Figure 1 - EBC20 Cutter, Exploded View	2	Figure 12 - EBE2218K Release Valve Kit	8
Figure 2 - EBC2001K Blade Kit	4	Figure 13 - EBE2210K Pump Kit	8
Figure 3 - EBC2002K Seal Kit	4	Figure 14 - EBC2011K Side Handle Kit	9
Figure 4 - EBC2303K Spring Kit	5	Figure 15 - EBC2012K Sleeve Kit	9
Figure 5 - EBC2004K Piston Kit	5	Figure 16 - EBC2013K Switch and Wiring Kit	9
Figure 6 - EBC2005K Head Kit	5	Figure 17 - EBC2016K Handle, Shell Kit	10
Figure 7 - EBC2006K Cylinder Body Kit	6	Figure 18 - EBC2014K Motor Kit	10
Figure 8 - EBC2007K Guard Kit	6	Figure 19 - EBC2017K Handle, Small Parts Kit	11
Figure 9 - EBC2008K Tank Kit	6	Figure 20 - EBC2015K Gearbox Kit	11
Figure 10 - EBC2009K Bearing Kit	7	Figure 21 - DKSCOMP Decal Kit	12
Figure 11 - EBC2010K Small Parts Kit	7		

⚠ WARNING Be certain that battery is removed from cutter before beginning any adjustment, maintenance or repair procedures. Appropriate shop safety procedures are to be followed during disassembly and reassembly to minimize any possibility of injury.

Note: Parts kits, components and product features described in this document are subject to change without notice.

Figure 1 - EBC20 Cutter, Exploded View

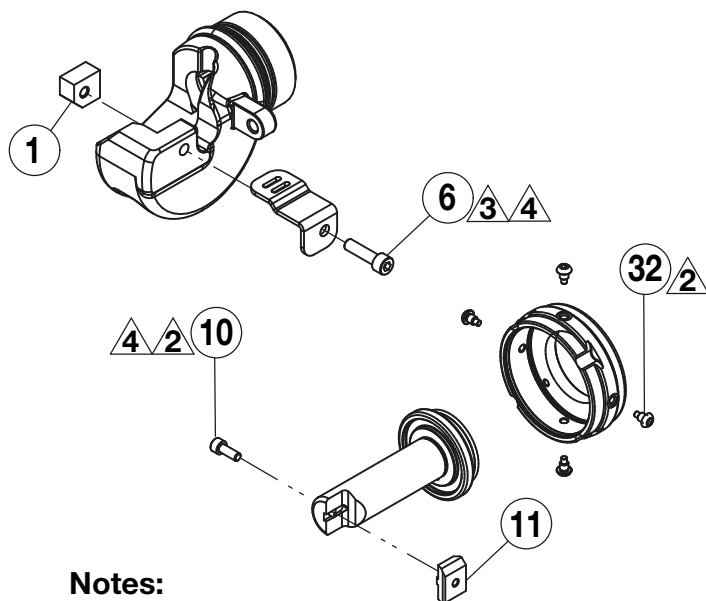


Notes:

- 1 Torque to 5.98 Nm [52.9 in-lbs].
- 2 Torque to 10.30 Nm [91.2 in-lbs].
- 3 Torque to 25 Nm [18 ft-lbs].
- 4 Apply Loctite 243.
- 5 Apply Loctite 542.

Repair Parts List for Figure 1		
Item No.	Qty.	Description
1	1	Fixed Blade
2	1	Head Assembly
3	1	HXBT Screw M10 x 35 UNI 5739 Zn
4	1	Nut M10 5589 Zn
5	1	Guard
6	1	Socket Cap Screw M8 x 30 UNI 5931 Zn
7	1	O-ring 64.77 x 2.62
8	1	Gasket
9	1	Spring F5.5 x e56 x 4.5 x Lo73
10	1	Socket Cap Screw M6 x 16
11	1	Moving Blade
12	1	Piston Assembly
13	1	Gasket
14	1	Fixing Screw
15	1	Flat Washer 8 x 12 x 1.4
16	1	Cylinder Assembly
17	1	Manual Return Valve
18	1	Relief Valve
19	1	Bearing R-S 22 x 8 x 7 608 C3
20	3	O-ring 6.07 x 1.78
21	1	Pump Assembly
22	1	O-ring 75.92 x 1.78
23	1	Machine Support
24	2	Schnorr Washer M5 Zn
25	2	Socket Cap Screw M5 x 18 UNI 5931 Zn
26	2	Socket Cap Screw M5 x 16 UNI 5931 Zn
27	1	O-ring 040/2287 72.75 x 1.78
28	1	Ball Bearing 32 x 15 x 9 6002 C3
29	1	Seeger Ring for Hole D=32 UNI 7437
30	1	O-ring 042 82.27 x 1.78
31	2	Half Ring
32	4	Button Screw M6 x 10 rounded
33	1	Retention Sleeve
34	1	O-ring 60.04 x 1.78
35	1	Oil Seal 15 x 25 x 5
36	1	Cap With Hole
37	1	Bonded Seal Washer 8.31 x 13.34 x 1.22
38	1	Oil Tank
39	4	Washer Grower M5 UNI 1751 Zn
40	1	Socket Cap Screw M5 x 43
41	1	Diaphragm
42	1	Diaphragm Housing Lid
43	1	Eccentric Shaft
44	2	Seeger Ring for Shaft D=15
45	1	Bearing 32 x 15 x 9
46	1	Handle
47	1	Handle Support
48	1	Motor Assembly
49	1	Trigger Guard
50	1	Button Head Cap Screw M5 x 10 10.9 UNI 7380 Zn
Notes: <ul style="list-style-type: none"> • Refer to Figures 2 through 21 for cutter repair kit parts diagrams and additional information. • Refer to the Enerpac catalog for battery and charger model numbers. 		

Figure 2 - EBC2001K Blade Kit



Notes:

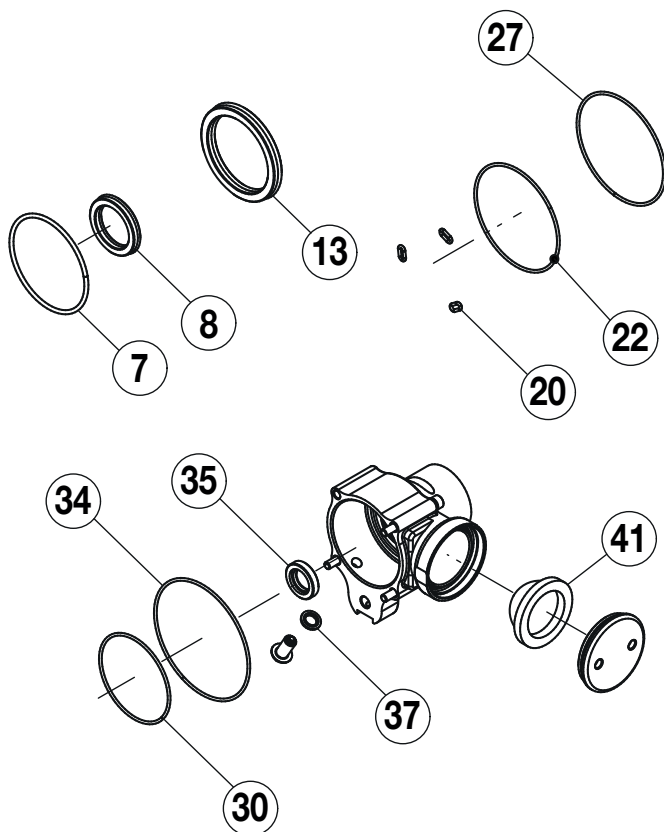
- 2** Torque to 10.30 Nm [91.2 in-lbs].
- 3** Torque to 25 Nm [18 ft-lbs].
- 4** Apply Loctite 243.

Parts List for Figure 2

Item No.	Qty.	Description
1	1	Fixed Blade
6	1	Socket Cap Screw M8 x 30 UNI 5931 Zn
10	1	Socket Cap Screw M6 x 16
11	1	Moving Blade
32	4	Button Screw M6 x 10 Rounded

Note: Kit parts available only in kits. Items not sold separately.

Figure 3 - EBC2002K Seal Kit

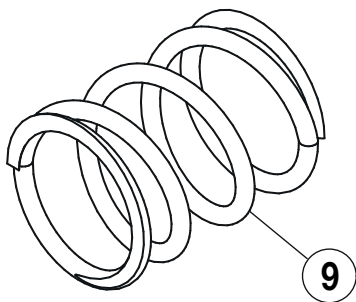


Parts List for Figure 3

Item No.	Qty.	Description
7	1	O-Ring 64.77 x 2.62
8	1	Gasket
13	1	Gasket
20	3	O-Ring 6.07 x 1.78
22	1	O-Ring 75.92 x 1.78
27	1	O-Ring 72.75 x 1.78
30	1	O-Ring 82.27 x 1.78
34	1	O-Ring 60.04 x 1.78
35	1	Oil Seal 15 x 25 x 5
37	1	Bonded Seal Washer 8.31 x 13.34 x 1.22
41	1	Diaphragm

Note: Kit parts available only in kits. Items not sold separately.

Figure 4 - EBC2003K Spring Kit

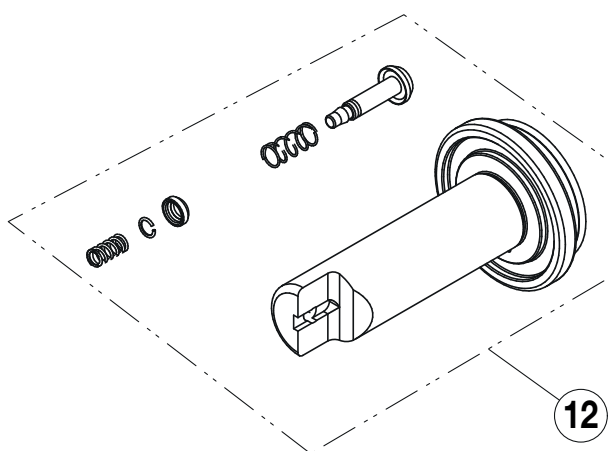


Parts List for Figure 4

Item No.	Qty.	Description
9	1	Spring F5.5 x e56 x 4.5 x Lo73 Grounded

Note: This kit contains only one part (item 9).

Figure 5 - EBC2004K Piston Kit

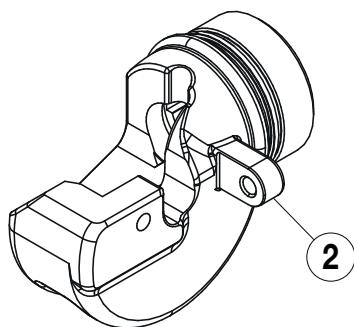


Parts List for Figure 5

Item No.	Qty.	Description
12	1	Piston Assembly

Note: Kit parts available only in kits. Items not sold separately.

Figure 6 - EBC2005K Head Kit

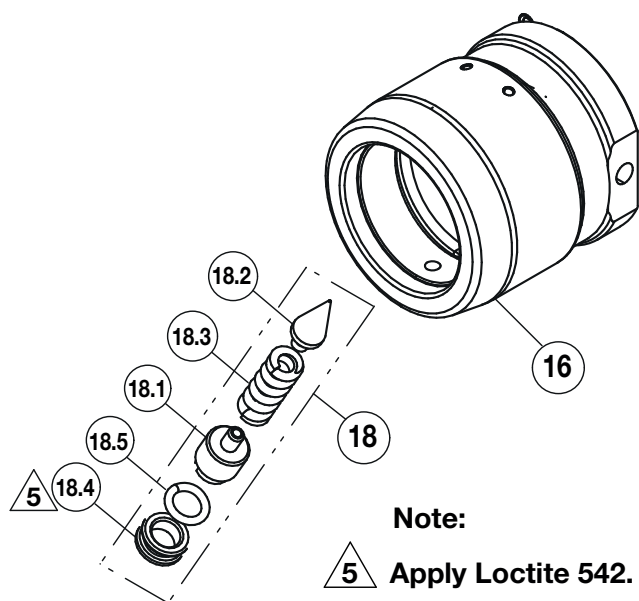


Parts List for Figure 6

Item No.	Qty.	Description
2	1	Head Assembly

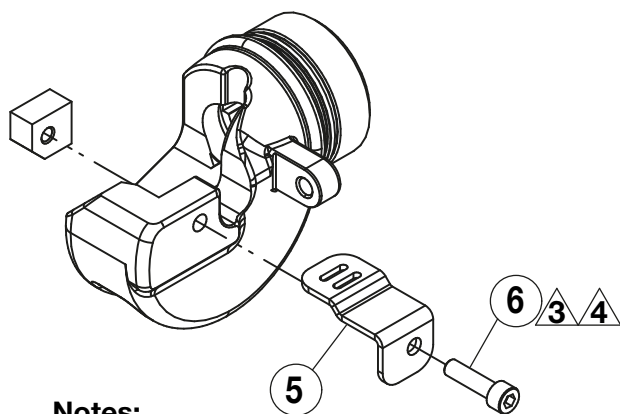
Note: This kit contains only one part (item 2).

Figure 7 - EBC2006K Cylinder Body Kit



Parts List for Figure 7		
Item No.	Qty.	Description
16	1	Cylinder Assembly
18	1	Relief Valve (includes items 18.1 - 18.5)
18.1	1	Adjustment Screw
18.2	1	Shutter
18.3	1	Spring F.2 x e8 x 7 x Lo20.5
18.4	1	Cap Valve
18.5	1	O-Ring 6.75 x 1.78
Note: Kit parts available only in kits. Items not sold separately.		

Figure 8 - EBC2007K Guard Kit



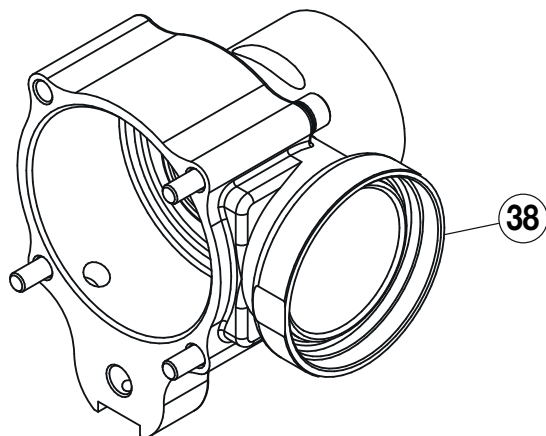
Notes:

3 Torque to 25 Nm [18 ft-lbs].

4 Apply Loctite 243.

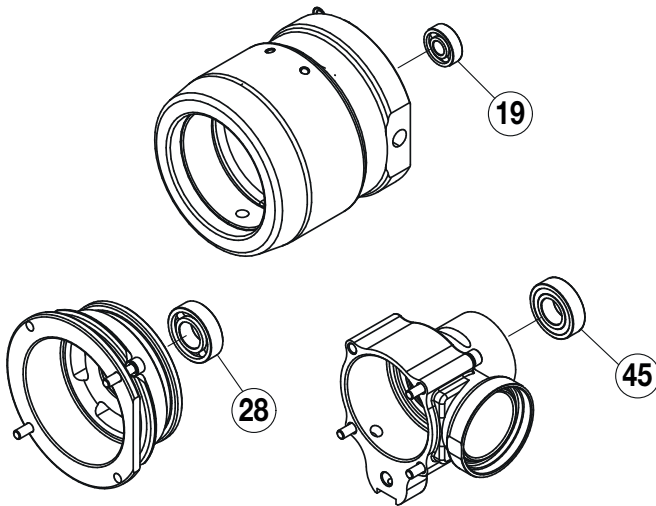
Parts List for Figure 8		
Item No.	Qty.	Description
5	1	Guard
6	1	Socket Cap Screw M8 x 30 UNI 5931 Zn
Note: Kit parts available only in kits. Items not sold separately.		

Figure 9 - EBC2008K Tank Kit



Parts List for Figure 9		
Item No.	Qty.	Description
38	1	Oil Tank
Note: This kit contains only one part (item 38).		

Figure 10 - EBC2009K Bearing Kit



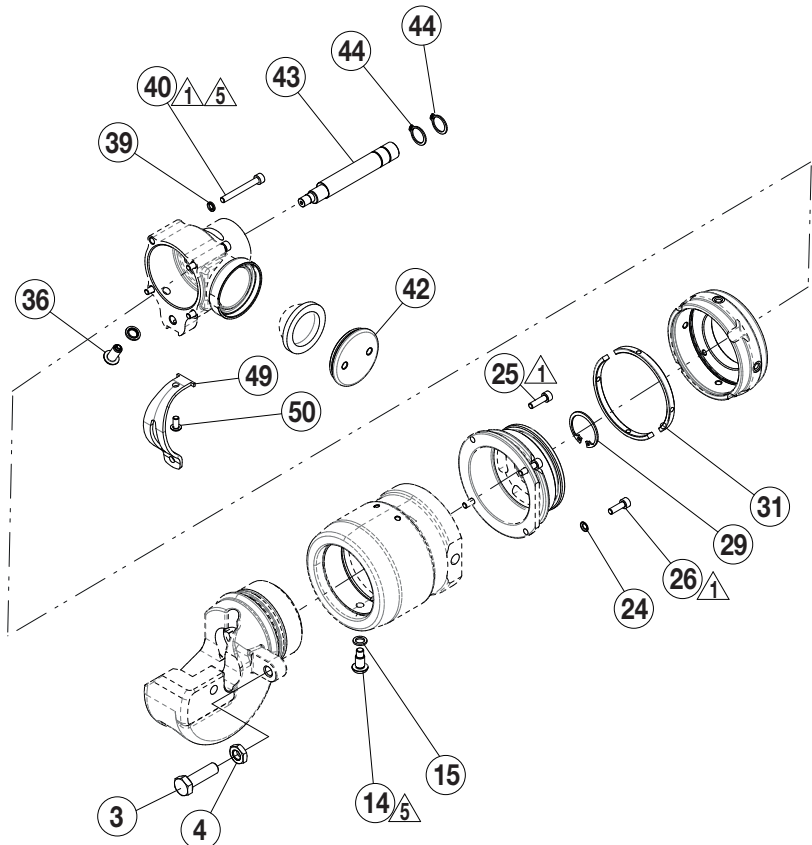
Parts List for Figure 10

Item No.	Qty.	Description
19	1	Bearing R-S 22 x 8 x 7 608 C3
28	1	Bearing 35 x 15 x 9
45	1	Bearing 32 x 15 x 9

Note: Kit parts available only in kits. Items not sold separately.

Figure 11 - EBC2010K Small Parts Kit

- Notes:
- 1 Torque to 5.98 Nm [52.9 in-lbs].
 - 5 Apply Loctite 542.



Parts List for Figure 11

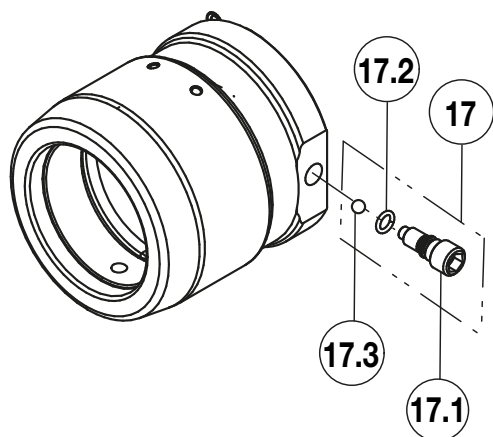
Item No.	Qty.	Description
3	1	HXBT Screw M10 x 35 UNI 5739 Zn
4	1	Nut M10 5589 Zn
14	1	Fixing Screw
15	1	Flat Washer 8 x 12 x 1.4 Copper
24	2	Schnorr Washer M5 Zn
25	2	Socket Cap Screw M5 x 18 UNI 5931 Zn
26	2	Socket Cap Screw M5 x 16 UNI 5931 Zn
29	1	Seeger Ring for Hole D=32 UNI 7437
31	2	Half Ring
36	1	Cap With Hole

Parts List for Figure 11 (continued)

Item No.	Qty.	Description
39	4	Grower Washer M5 Zn
40	4	Socket Cap Screw M5 x 43
42	1	Diaphragm Housing Lid
43	1	Eccentric Shaft
44	2	Seeger Ring for Shaft D=15
49	1	Trigger Guard
50	1	Button Head Cap Screw M5 x10 Zn

Note: Kit parts available only in kits. Items not sold separately.

Figure 12 - EBE2218K Release Valve Kit

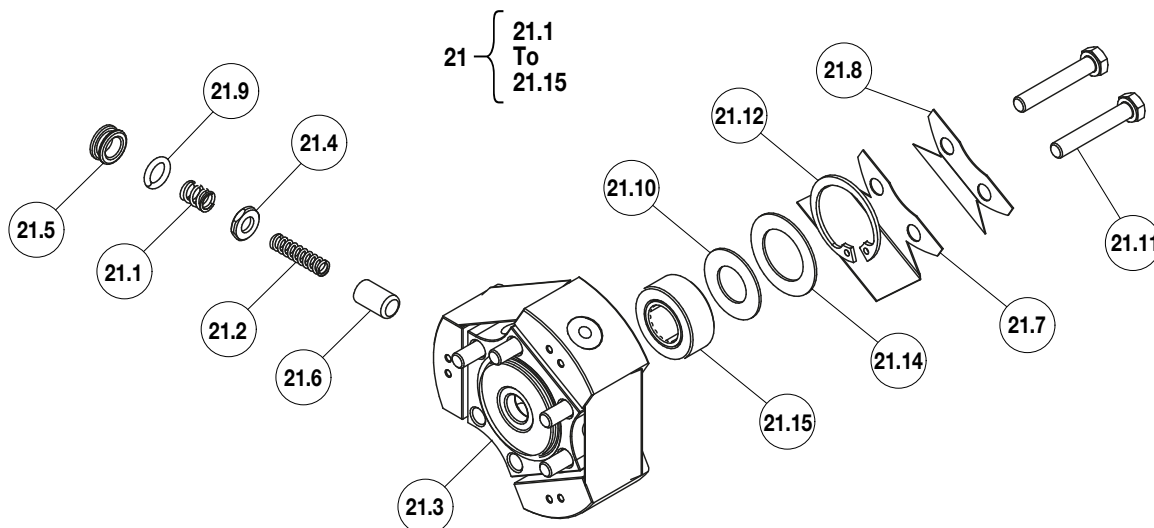


Parts List for Figure 12

Item No.	Qty.	Description
17	1	Manual Return Valve (includes items 17.1-17.3)
17.1	1	Manual Release Valve
17.2	1	O-Ring 610 6.75 x 1.78
17.3	1	Ball 7/32 d. 5.56

Note: Kit parts available only in kits. Items not sold separately.

Figure 13 - EBE2210K Pump Kit



Parts List for Figure 13

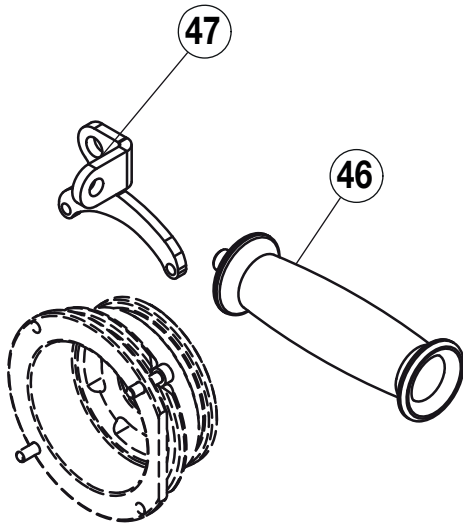
Item No.	Qty.	Description
21	1	Pump Assembly (includes parts 21.1 through 21.15)
21.1	3	Spring F.0.9 x e6.5 x 4.75 x Lo8.5
21.2	3	Spring F.0.8 x e5 x 11 x Lo20
21.3	1	Pump Body
21.4	3	Pump Valve
21.5	3	Valve Oil Cap
21.6	3	Pump Piston
21.7	3	Oil Filter
21.8	3	Filter Support

Parts List for Figure 13 (continued)

Item No.	Qty.	Description
21.9	3	O-Ring 6.75 x 1.78
21.10	1	Bearing R-R 12 x 24 x 9.8 INA RSTO 8
21.11	6	HXBT Screw M5 x 30 UNI 5739 Zn
21.12	1	Seeger Ring for Hole D=37 UNI 7437
21.13	1	Flat Washer 12.1 x 23 x 1
21.14	1	Flat Washer 17 x 26.8 x 1
21.15	1	Bearing R-R 12 x 24 x 9.8 INA RSTO 8

Note: Kit parts available only in kits. Items not sold separately.

Figure 14 - EBC2011K Side Handle Kit

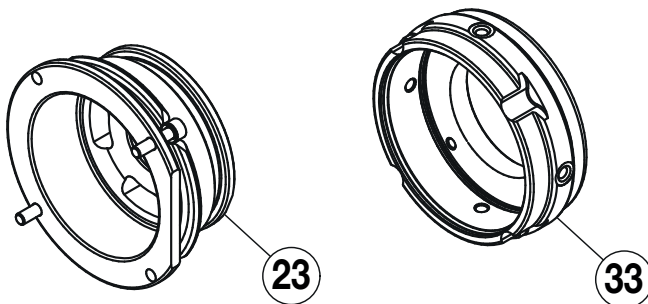


Parts List for Figure 14

Item No.	Qty.	Description
46	1	Handle
47	1	Handle Support

Note: Kit parts available only in kits. Items not sold separately.

Figure 15 - EBC2012K Sleeve Kit

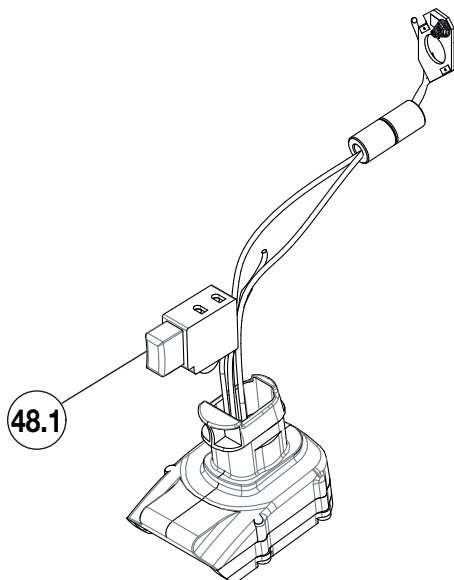


Parts List for Figure 15

Item No.	Qty.	Description
23	1	Machine Support
33	1	Retention Sleeve

Note: Kit parts available only in kits. Items not sold separately.

Figure 16 - EBC2013K Switch and Wiring Kit

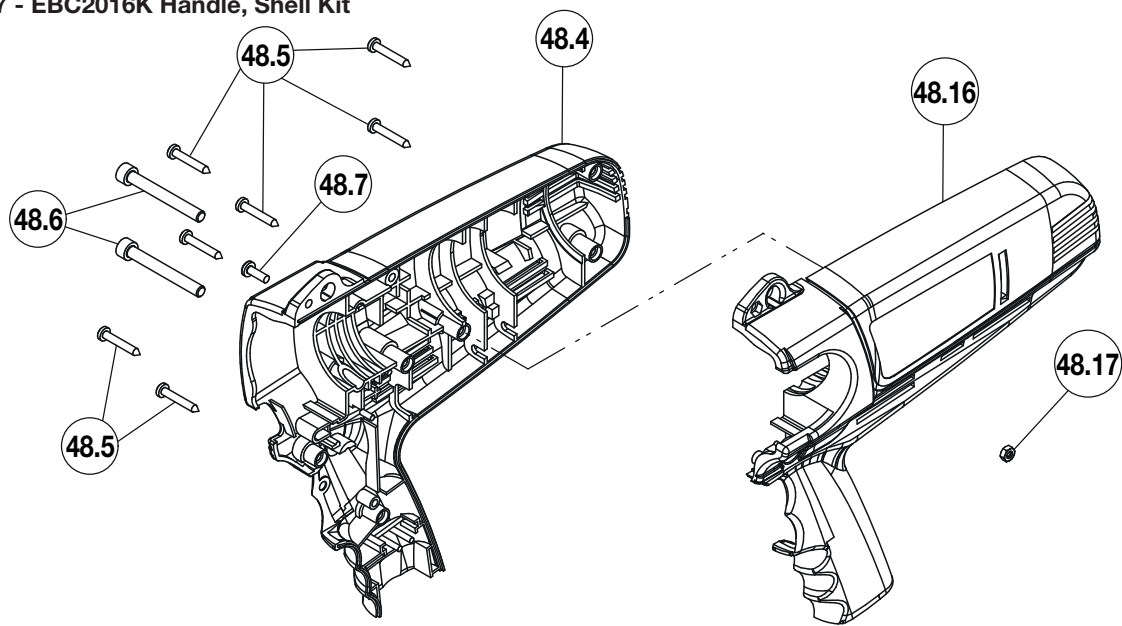


Parts List for Figure 16

Item No.	Qty.	Description
48.1	1	Switch and Electrical Wiring

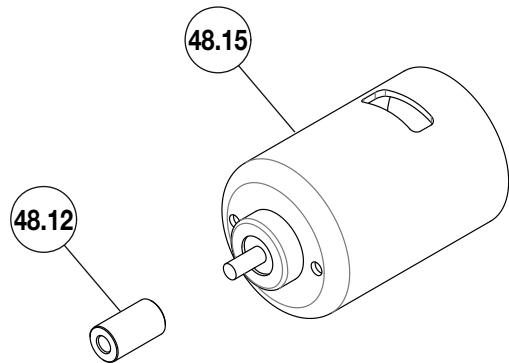
Note: Kit parts available only in kits. Items not sold separately.

Figure 17 - EBC2016K Handle, Shell Kit



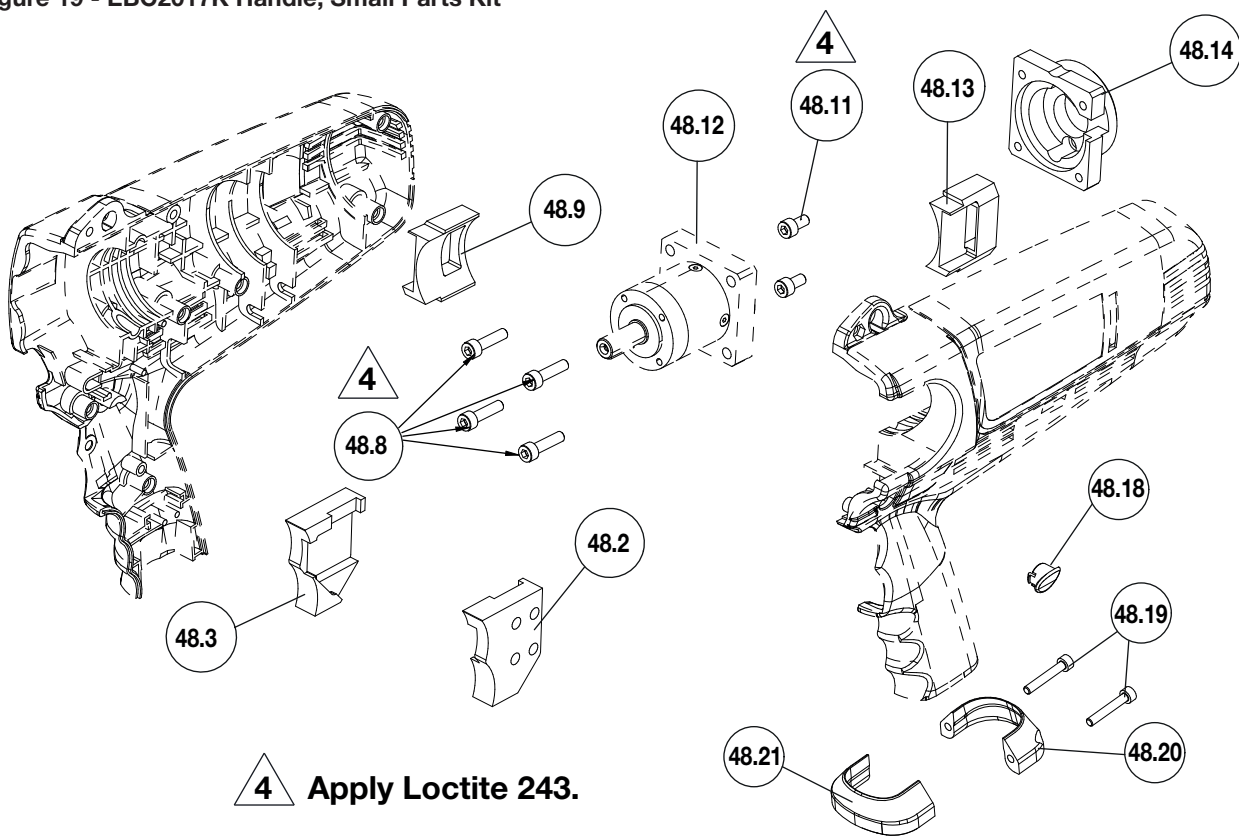
Parts List for Figure 17		
Item No.	Qty.	Description
48.4	1	Right Half-Shell for Handle
48.5	7	Pan Head Screw 3.9 x 25
48.6	2	Socket Cap Screw M6 x 50
48.7	1	Pan Head Screw M4 x 12
48.16	1	Left Half-Shell for Handle
48.17	1	Nut M4
Note: Kit parts available only in kits. Items not sold separately.		

Figure 18 - EBC2014K Motor Kit



Parts List for Figure 18		
Item No.	Qty.	Description
48.12	1	Bushing Coupler
48.15	1	Electric Motor
Note: Kit parts available only in kits. Items not sold separately.		

Figure 19 - EBC2017K Handle, Small Parts Kit



Parts List for Figure 19

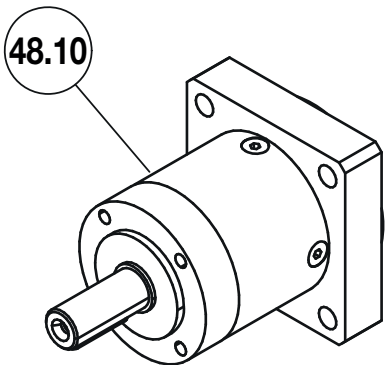
Item No.	Qty.	Description
48.2	1	Left Switch Housing
48.3	1	Right Switch Housing
48.8	4	Socket Cap Screw M5 x 20
48.9	1	Right Air Dam
48.11	2	Socket Cap Screw M5 x 10
48.14	1	Coupling Flange for Planetary Gearbox
48.13	1	Left Air Dam

Parts List for Figure 19 (continued)

Item No.	Qty.	Description
48.18	1	Cap
48.19	2	Socket Cap Screw M4 x 25
48.20	1	Fixing Rear-Ring for Handle
48.21	1	Fixing Front-Ring for Handle

Note: Kit parts available only in kits. Items not sold separately.

Figure 20 - EBC2015K Gearbox Kit



Parts List for Figure 20

Item No.	Qty.	Description
48.10	1	Planetary Gearbox

Note: This kit contains only one part (item 48.10).

Figure 21 - DKSCOMP Decal Kit

Notes:

- The decal kit contains decals used on many different cutter models.
- Replace only the decals used on your cutter. Discard the remaining decals in the kit.



www.enerpac.com