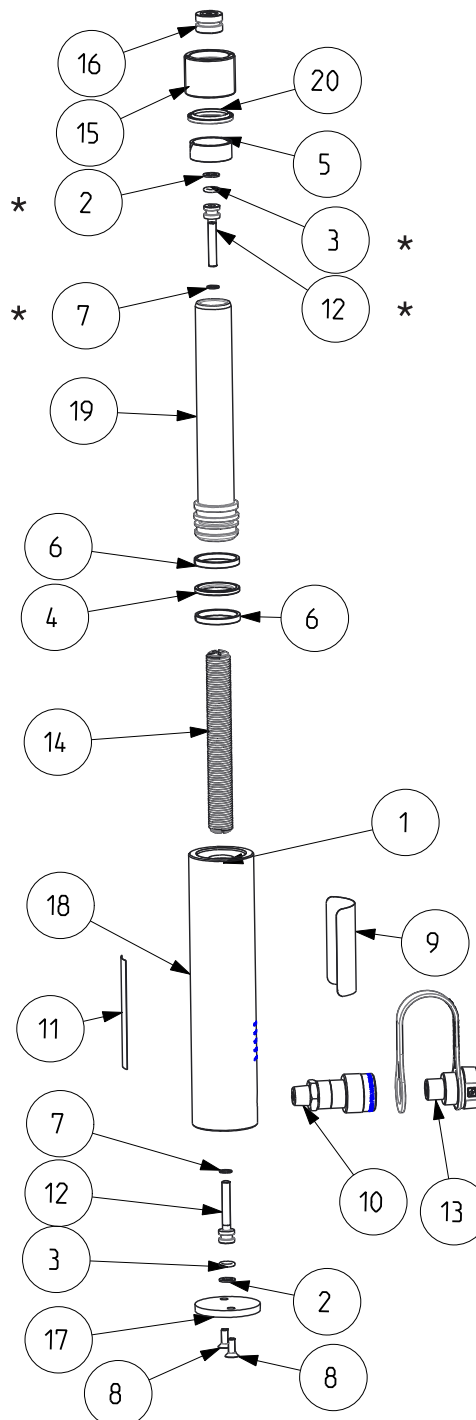


Repair Parts Sheet	Revision	Revision Date	Product Code Beginning
L4373	Rev. B	02/19	A



\* Items only included in models  
 RAC106 & RAC156

**Figure 1**

# Repair Parts List RAC 10 - Figure 1

L 4373

Item	Description	Qty	RAC102	RAC104	RAC106
1	O-Ring-3/4", 15/16", "", NBR, 70 Duro	1	▲	▲	▲
2	Back up Teflon	1	▲	▲	
		2			▲
3	O-Ring-3/8", 9/16", 3/32", NBR, 90 Duro	1	▲	▲	
		2			▲
4	Piston Seal 40x29x4.2	1	▲	▲	▲
5	Bearing 32x37x15x2.5	1	▲	▲	▲
6	Bearing 40x35x5.6x2.5	2	▲	▲	▲
7	Copper Gasket	1	▲	▲	
		2			▲
8	Screw-set, Flat, HS, M6x1x16, 10.9, Plain	2	●	●	●
9	Warning Decal	1	▲	▲	▲
10	Female Coupler	1	DC1389900	DC1389900	DC1389900
11	Enerpac Decal	1	▲	▲	▲
12	Socket Head Screw	1	DD1543160	DD1543160	
		2			DD154316
13	Dust Cap	1	▲	▲	▲
14	Spring. RC101	1	DD2254110		
	Spring. RC104	1		DD2264110	
	Spring	1			DD267110
15	Stop Ring RAC 10	1	RAC10044	RAC10044	RAC10044
16	Saddle	1	RAC10045	RAC10045	RAC10045
17	RAC 10 Base Plate	1	●	●	●
18	Base 10 T 50 mm Stroke	1	RAC102030		
	Base 10 T 100 mm Stroke	1		RAC104030	
	Base 10 T 150 mm Stroke	1			RAC106030
19	Plunger 10T 50mm Stroke	1	RAC102040		
	Plunger 10T 100mm Stroke	1		RAC104040	
	Plunger 10T 150mm Stroke	1			RAC106040
20	Scraper 32x40x3.7x35	1	▲	▲	▲

▲ = Indicated parts only available at Repair Kit RAC10K.

● = Indicated parts only available at Accessory base plate Kit JBA10.



Item nr.	Torque / remark
8	Accessory protector plate for base (not included)
10	Torque to 40-60 FT-LBS (55-81 Nm)
12	For M8 size screws torque to 10-12 Nm
15	Torque to 40-60 FT-LBS (55-81 Nm)
	Apply grease molykote grease CU7439PLUS
17	Accessory protector plate for base (not included)

# Repair Parts List RAC 15 - Figure 1

# L 4373

Item	Description	Qty	RAC152	RAC154	RAC156
1	O-Ring-3/4", 15/16", " , NBR, 70 Duro	1	▲	▲	▲
2	Back up Teflon	1	▲	▲	
		2			▲
3	O-Ring-3/8", 9/16", 3/32", NBR, 90 Duro	1	▲	▲	
		2			▲
4	Piston Seal 50x34.5x6.3	1	▲	▲	▲
5	Bearing 40x45x15	1	▲	▲	▲
6	Bearing 50x45x5.6x2.5	2	▲	▲	▲
7	Copper Gasket	1	▲	▲	
		2			▲
8	Screw-set, Flat, HS, M6x1x16, 10.9, Plain	2	●	●	●
9	Warning Decal	1	▲	▲	▲
10	Female Coupler	1	DC1389900	DC1389900	DC1389900
11	Enerpac Decal	1	▲	▲	▲
12	Socket Head Screw	1	DD1543160	DD1543160	
		2			DD154316
13	Dust Cap	1	▲	▲	▲
14	Spring. RC101	1	DD2254110		
	Spring. RC104	1		DD2264110	
	Spring	1			DD267110
15	Stop Ring	1	RAC15044	RAC15044	RAC15044
16	Saddle	1	RAC15045	RAC15045	RAC15045
17	Rack 15 Base Plate		●	●	●
18	Base 10 T 50 mm Stroke	1	RAC152030		
	Base 10 T 100 mm Stroke	1		RAC154030	
	Base 10 T 150 mm Stroke	1			RAC156030
19	Plunger 10T 50mm Stroke	1	RAC152040		
	Plunger 10T 100mm Stroke	1		RAC154040	
	Plunger 10T 150mm Stroke	1			RAC156040
20	Scraper 40x48.6x5.3x43	1	▲	▲	▲

▲ = Indicated parts only available at Repair Kit RAC15K.

● = Indicated parts only available at Accessory base plate Kit JBA15.



Item nr.	Torque / remark
8	Accessory protector plate for base (not included)
10	Torque to 40-60 FT-LBS (55-81 Nm)
12	For M8 size screws torque to 90-110 in LBS
15	Torque to 40-60 FT-LBS (55-81 Nm)
	Apply grease molykote grease CU7439PLUS
17	Accessory protector plate for base (not included)



To maintain your warranty:

- Use only Enerpac Oil
- Have your products inspected and repaired by an Enerpac Authorized Service Center

## ENERPAC

Visit [www.enerpac.com](http://www.enerpac.com) for the location of the Enerpac Authorized Service Center nearest you.