



Repair Parts Sheet

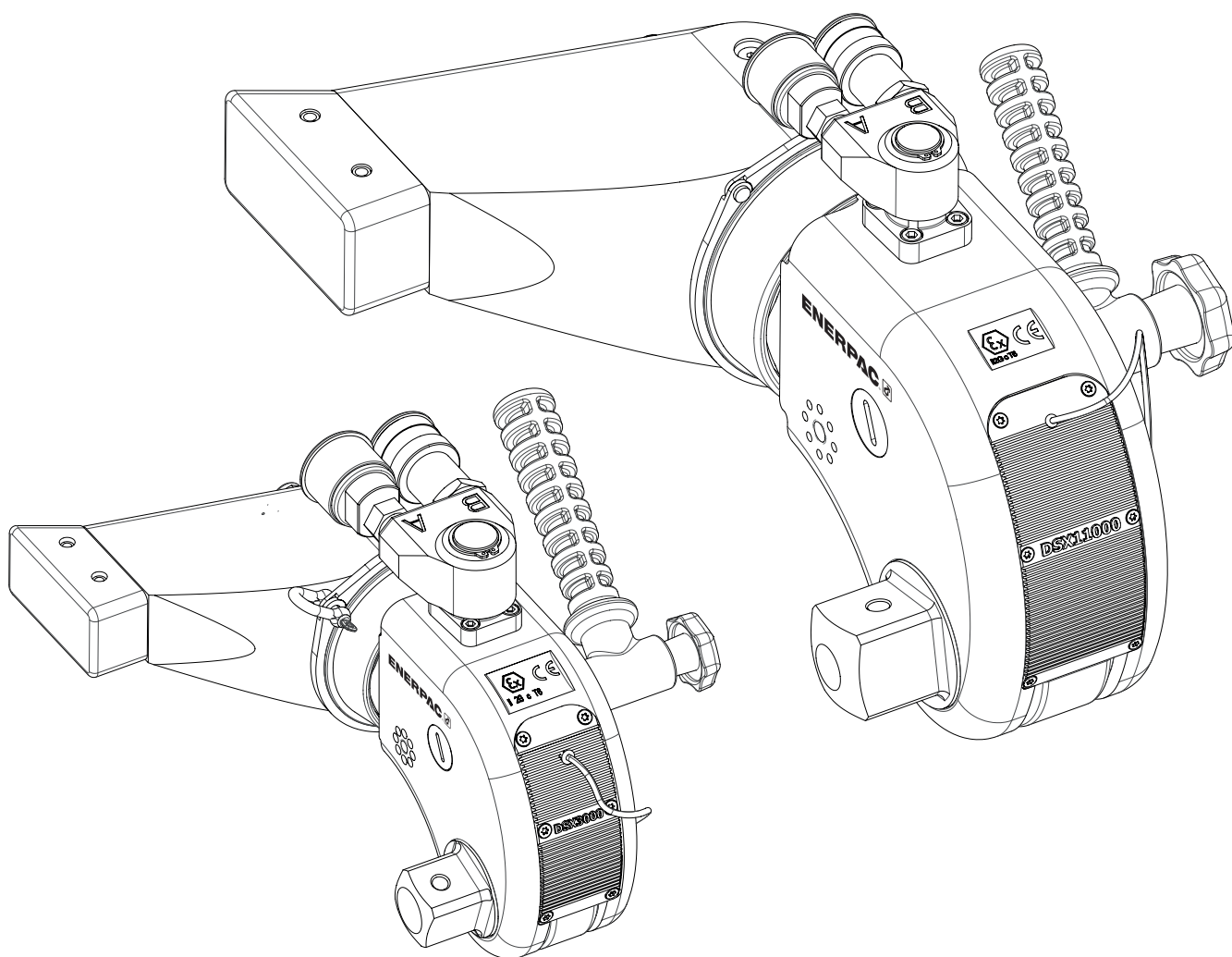
Hydraulic Torque Wrench DSX Series

L4443 Rev. D 5/22

For Date Codes Beginning with the Letter "A"

To Protect Your Warranty, Use Only ENERPAC Hydraulic Oil.

Enerpac recommends that all kit components be installed to ensure optimum performance of the repaired product.



NOTE: Only applicable to **silver coloured** DSX tools. For **blue coloured** DSX please refer to bolting support.

Note:

Refer to the wrench instruction sheet for detailed maintenance instruction,

✱ Apply Loctite 222 Thread Sealant

✱ Tighten to Torque Value of 1.2 Ft.lbs [1.6 Nm]

✚ Apply molybdenum disulphide grease

☆ Apply ISO 10 grade oil to O-rings.

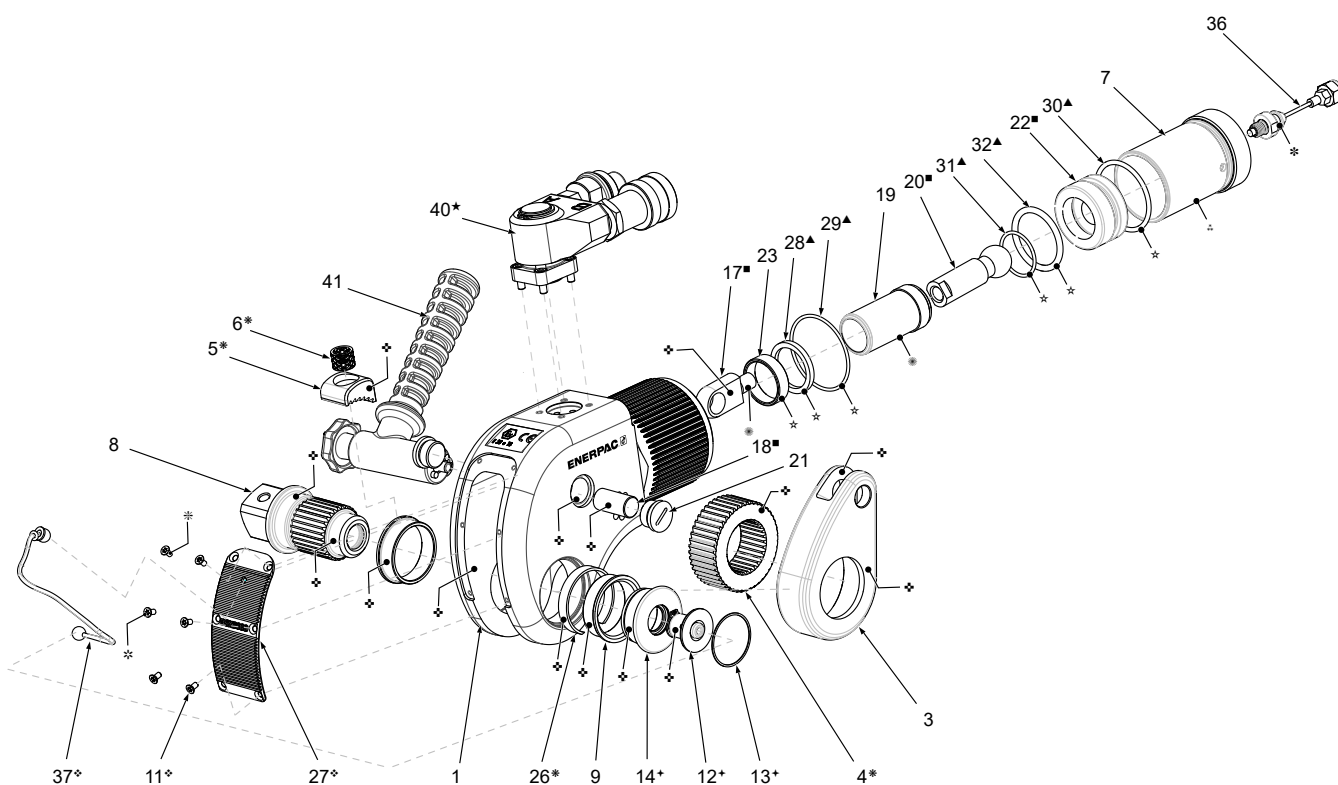
✱ Tighten to Torque Value of 1.2 Ft.lbs [1.6Nm]

✱ Torque Values for Piston Sleeve:

▫ DSX1500 : 60Nm

▫ DSX3000 : 60Nm

▫ DSX5000 : 150Nm

**Service Kits:**

Items marked ▲ supplied in Seal Kit: DSX1500SK, DSX3000SK, DSX5000SK.

Items marked + supplied in Square Drive Retainer Kit: DSX1500DRK, DSX3000DRK, DSX5000DRK.

Items marked * supplied in Ratchet Kit: DSX1500RK, DSX3000RK, DSX5000RK.

Items marked ▫ supplied in Cylinder Rebuild Kit: DSX1500DK, DSX3000DK, DSX5000DK.

Items marked ✱ supplied in Guard Kit: DSX1500GK, DSX3000GK, DSX5000GK.

☆ See Figure 4 for exploded diagram for the Swivel Assembly and Swivel Seal Kit repair part list.

Figure 1: Torque Wrench Assembly, Models DSX1500, DSX3000, DSX5000

Repair Parts List For Figure 1 – DSX1500, DSX3000, DSX5000					
Item	Description	Qty	Part Numbers		
			DSX1500	DSX3000	DSX5000
1	Body	1	not available	not available	not available
3	Drive Plate	1	DSX1500-03	DSX3000-03	DSX5000-03
4	Ratchet	1	*	*	*
5	Pawl	1	*	*	*
6	Pawl Wave Spring	1	*	*	*
7	Piston Sleeve	1	DSX1500-07	DSX3000-07	DSX5000-07
8	Square Drive	1	DSX1500-08	DSX3000-08	DSX5000-08
9	Bush	2	DSX1500-09	DSX3000-09	DSX5000-09
11	Shroud Screw	6	❖	❖	❖
12	Drive Retainer	1	+	+	+
13	Drive Retainer Clip	1	+	+	+
14	Retainer Block	1	+	+	+
17	Rod End	1	■	■	■
18	Rod End Pin	1	■	■	■
19	Piston	1	DSX1500-19	DSX3000-19	DSX5000-19
20	Piston Rod	1	■	■	■
21	Access Plug	2	DSX1500-21	DSX3000-21	DSX5000-21
22	Piston Head	1	■	■	■
23	Piston Bush	1	DSX1500-23	DSX3000-23	DSX5000-23
26	Drive Retainer Ring	1	*	*	*
27	Shroud	1	❖	❖	❖
28	Rod Seal	1	▲	▲	▲
29	Piston O-Ring	1	▲	▲	▲
30	Piston Head Thread Seal	1	▲	▲	▲
31	Back Cap Seal	1	▲	▲	▲
32	Back Cap Front Seal	1	▲	▲	▲
36	Wire Assembly	1	ENP-10074	ENP-10075	ENP-10076
37	Tether	1	❖	❖	❖
40	Swivel Assembly*	1	SP300MKA	SP300MKA	SP300MKB
41	Handle	1	SWH6A	SWH6A	SWH10A

▲ Indicates items included and available only as part of Seal Kit: DSX1500SK, DSX3000SK, DSX5000SK.
 + Indicates items included and available only as part of Square Drive Retainer Kit: DSX1500DRK, DSX3000DRK, DSX5000DRK.
 * Indicates items included and available only as part of Ratchet Kit: DSX1500RK, DSX3000RK, DSX5000RK.
 ■ Indicates items included and available only as part of Cylinder Rebuild Kit: DSX1500DK, DSX3000DK, DSX5000DK.
 ❖ Indicates items included and available only as part of Guard Kit: DSX1500GK, DSX3000GK, DSX5000GK.
 * See Figure 4 for exploded diagram for the Swivel Assembly and Swivel Seal Kit repair part list.

Note:

Refer to the wrench instruction sheet for detailed maintenance instruction,

✱ Apply Loctite 222 Thread Sealant

✱ Tighten to Torque Value of 1.2 Ft.lbs [1.6 Nm]

✦ Apply molybdenum disulphide grease

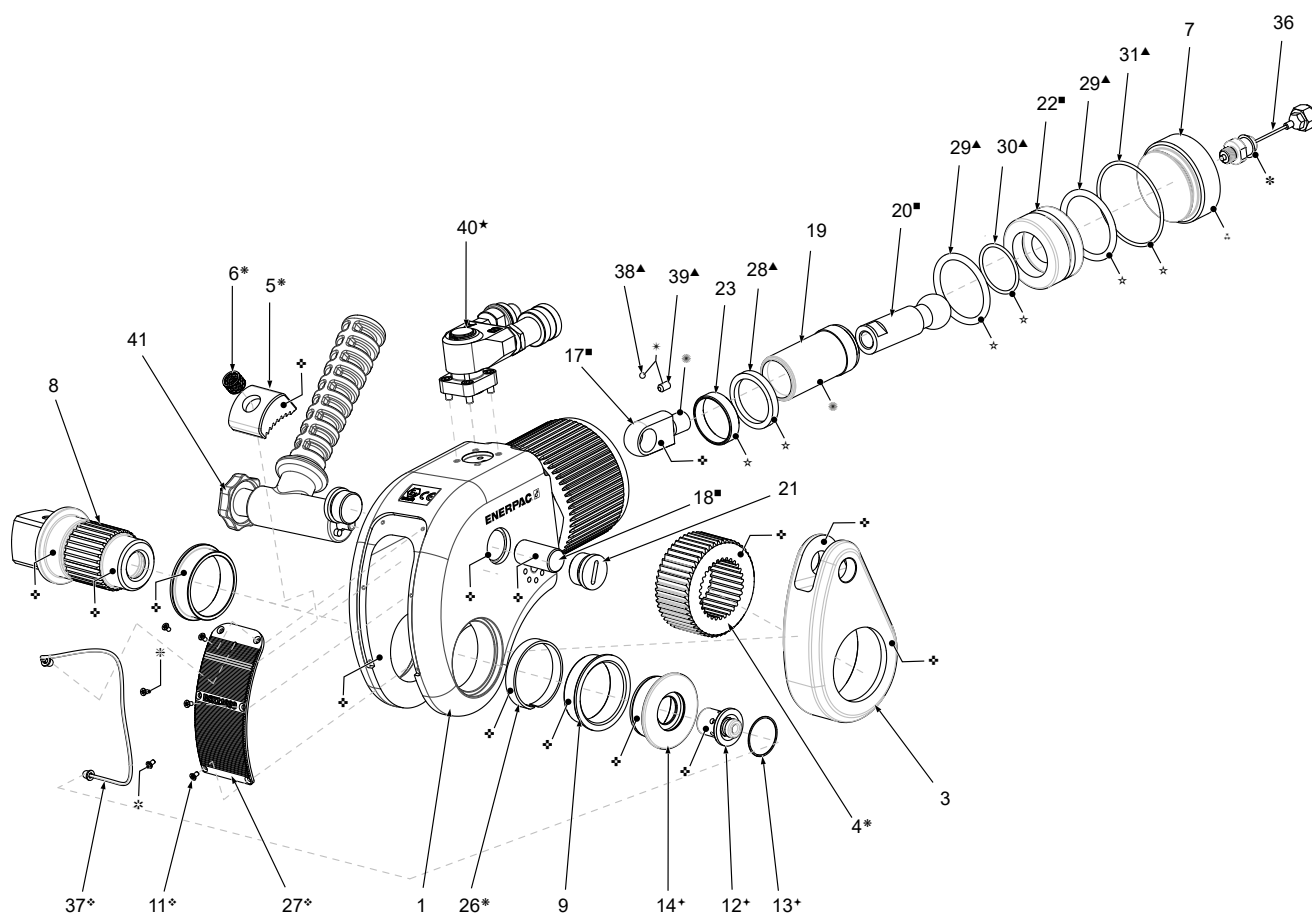
☆ Apply ISO 10 grade oil to O-rings.

☼ Tighten to Torque Value of 1.2 Ft.lbs [1.6Nm]

✱ Torque Values for Piston Sleeve:

▫ DSX11000 : 160Nm

▫ DSX25000 : 200Nm

**Service Kits:**

Items marked ▲ supplied in Seal Kit: DSX11000SK, DSX25000SK.

Items marked + supplied in Square Drive Retainer Kit: DSX11000DRK, DSX25000DRK.

Items marked * supplied in Ratchet Kit: DSX11000RK, DSX25000RK.

Items marked ■ supplied in Cylinder Rebuild Kit: DSX11000DK, DSX25000DK.

Items marked ✦ supplied in Guard Kit: DSX11000GK, DSX25000GK.

✱ See Figure 4 for exploded diagram for the Swivel Assembly and Swivel Seal Kit repair part list.

Figure 1: Torque Wrench Assembly, Models DSX11000, DSX25000

Repair Parts List For Figure 2 – DSX11000, DSX25000				
Item	Description	Qty	Part Numbers	
			DSX11000	DSX25000
1	Body	1	not available	not available
3	Drive Plate	1	DSX11000-03	DSX25000-03
4	Ratchet	1	*	*
5	Pawl	1	*	*
6	Pawl Wave Spring	1	*	*
7	Piston Sleeve	1	DSX11000-07	DSX25000-07
8	Square Drive	1	DSX11000-08	DSX25000-08
9	Bush	2	DSX11000-09	DSX25000-09
11	Shroud Screw	6	❖	❖
12	Drive Retainer	1	✦	✦
13	Drive Retainer Clip	1	✦	✦
14	Retainer Block	1	✦	✦
17	Rod End	1	■	■
18	Rod End Pin	1	■	■
19	Piston	1	DSX11000-19	DSX25000-19
20	Piston Rod	1	■	■
21	Access Plug	2	DSX11000-21	DSX25000-21
22	Piston Head	1	■	■
23	Piston Bush	1	DSX11000-23	DSX25000-23
26	Drive Retainer Ring	1	*	*
27	Shroud	1	❖	❖
28	Rod Seal	1	▲	▲
29	Piston O-Ring + Back Cap Seal	2	▲	▲
30	Piston Head Thread Seal	1	▲	▲
31	Back Cap Seal	1	▲	▲
32	Back Cap Front Seal	-	N/A	N/A
37	Tether	1	❖	❖
38	Ball Bearing	1	▲	▲
39	Grub Screw	1	▲	▲
40	Swivel Assembly*	1	SP300MKB	SP300MKB
41	Handle	1	SWH10A	N/A
41	Eyebolt	1	N/A	EYE01C001

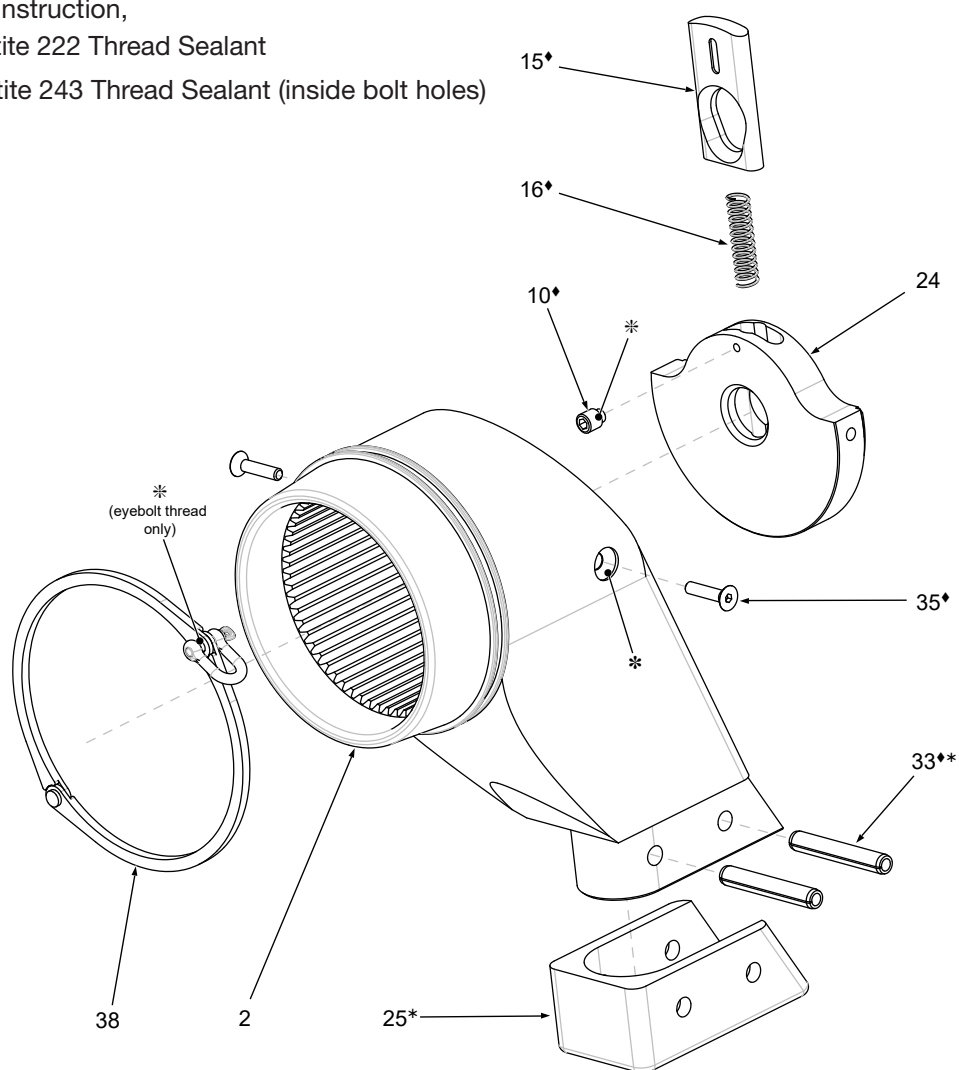
▲ Indicates items included and available only as part of Seal Kit: DSX11000SK, DSX25000SK.
 ✦ Indicates items included and available only as part of Square Drive Retainer Kit: DSX11000DRK, DSX25000DRK.
 * Indicates items included and available only as part of Ratchet Kit: DSX11000RK, DSX25000RK.
 ■ Indicates items included and available only as part of Cylinder Rebuild Kit: DSX11000DK, DSX25000DK.
 ❖ Indicates items included and available only as part of Guard Kit: DSX11000GK, DSX25000GK.
 * See Figure 4 for exploded diagram for the Swivel Assembly and Swivel Seal Kit repair part list.

Note:

Refer to the wrench instruction sheet for detailed maintenance instruction,

* Apply Loctite 222 Thread Sealant

* Apply Loctite 243 Thread Sealant (inside bolt holes)

**Service Kits:**

Items marked * supplied in Reaction Arm Kit: DSX1500RAK, DSX3000RAK, DSX3000RAK, DSX11000RAK, DSX25000RAK.

Items marked * supplied in Boot Kit: DSX1500BK, DSX3000BK, DSX3000BK, DSX11000BK, DSX25000BK.

Figure 3: Exploded View, DSX Torque Wrench Reaction Arm

Repair Parts List For Figure 3 – DSX1500, DSX3000, DSX5000					
Item	Description	Qty	Part Numbers		
			DSX1500	DSX3000	DSX5000
	Reaction Arm Assembly	-	DSX1500-SA02	DSX3000-SA02	DSX5000-SA02
2	Reaction Arm	1	DSX1500-02	DSX3000-02	DSX5000-02
10	Grub Screw	1	◆	◆	◆
15	Retainer Tab	1	◆	◆	◆
16	Spring	1	◆	◆	◆
24	Plate	1	DSX1500-24	DSX3000-24	DSX5000-24
25	Boot	1	*	*	*
33	Roll Pin	2	◆ *	◆ *	◆ *
35	Plate Screw	2	◆	◆	◆
38	Shackle Ring	1	ENP-10171	ENP-10172	ENP-10173
◆ Indicates items included and available only as part of Reaction Arm Kit: DSX1500RAK, DSX3000RAK, DSX5000RAK					
* Indicates items included and available only as part of Boot Kit: DSX1500BK, DSX3000BK, DSX5000BK					

Repair Parts List For Figure 3 – DSX11000, DSX25000				
Item	Description	Qty	Part Numbers	
			DSX11000	DSX25000
	Reaction Arm Assembly	-	DSX11000-SA02	DSX25000-SA02
2	Reaction Arm	1	DSX11000-02	DSX25000-02
10	Grub Screw	1	◆	◆
15	Retainer Tab	1	◆	◆
16	Spring	1	◆	◆
24	Plate	1	DSX11000-24	DSX25000-24
25	Boot	1	*	*
33	Roll Pin	2	◆ *	◆ *
35	Plate Screw	2	◆	◆
38	Shackle Ring	1	ENP-10174	N/A
◆ Indicates items included and available only as part of Reaction Arm Kit: DSX11000RAK, DSX25000RAK				
* Indicates items included and available only as part of Boot Kit: DSX11000BK, DSX25000BK				

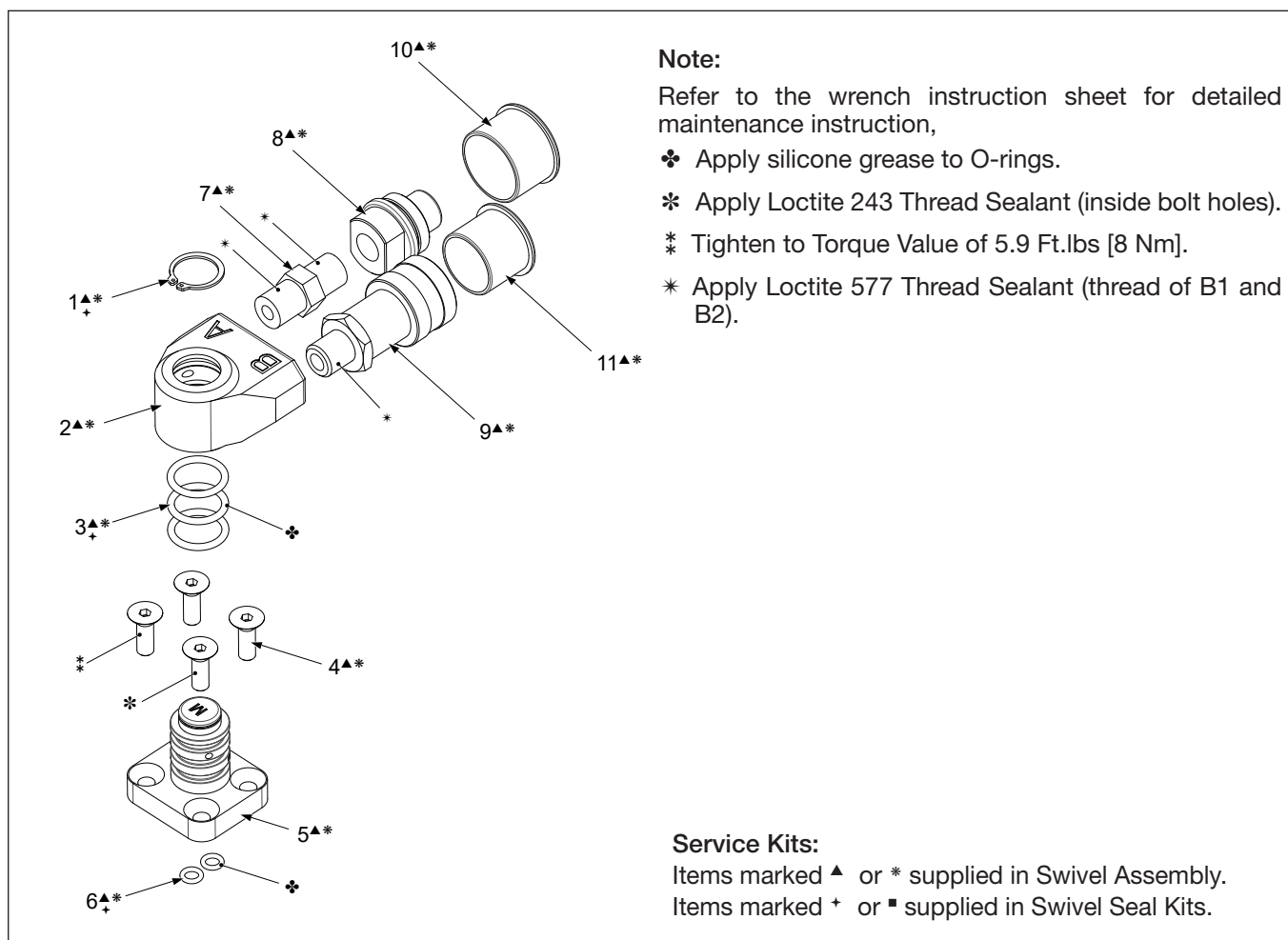


Figure 4: Exploded View, DSX Torque Wrench Standard Swivel Assembly

Item	Description	Qty	Part Numbers	
			DSX1500, DSX3000	DSX5000, DSX11000, DSX25000
1	Circlip	1	▲ +	* +
2	Swivel Manifold Block	1	SP300101 ▲	SP300101 *
3	O-Ring	3	▲ +	* +
4	Socket Head Capscrews	4	▲	*
5	Swivel Manifold Post	1	W4000126 ▲	W15000126 *
6	O-Ring	2	▲ +	* +
7	Adaptor [10,000 psi]	1	▲	*
8	Male Coupling [10,000 psi]	1	▲	*
9	Female Coupling [10,000 psi]	1	▲	*
10	Dust Cap for male coupler	1	▲	*
11	Dust Cap for female coupler	1	▲	*

▲ Indicates items included and available only as part of Swivel Assembly: SP300MKA.
* Indicates items included and available only as part of Swivel Assembly: SP300MKB.
+ Indicates items included and available only as part of Swivel Seal Kit: TSP300MSK.

Note:

Refer to the wrench instruction sheet for detailed maintenance instruction,

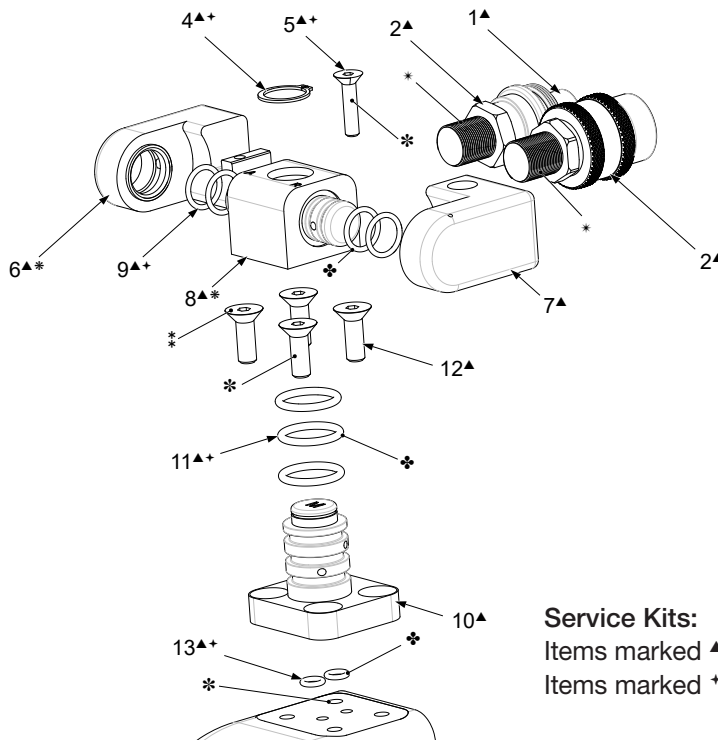
✱ Apply silicone grease to O-rings.

* Apply Loctite 243 Thread Sealant (inside bolt holes)

* Tighten to Torque Value of 5.9 Ft.lbs [8 Nm]

▲ Tighten to Torque Value of 1.2 Ft.lbs [1.6Nm]

* Apply Loctite 577 Thread Sealant (thread of B1 and B2)

**Service Kits:**

Items marked ▲ or * supplied in Tilt Swivel Assembly.

Items marked ✱ or ■ supplied in Swivel Seal Kits.

Figure 5: Exploded View, DSX Torque Wrench Tilt Swivel Assembly (Optional Accessory)

Item	Description	Qty	Part Numbers	
			DSX1500, DSX3000	DSX5000, DSX11000, DSX25000
1	Coupler Male	1	▲	*
2	Coupler Female	1	▲	*
3	Adaptor		▲	*
4	Circlip	1	▲ ✱	* ■
5	Body Capscrew	1	▲ ✱	* ■
6	Swivel Arm A	1	▲	*
7	Swivel Arm B	1	▲	*
8	Swivel Manifold Block	1	▲	*
9	Arm O-Rings	4	▲ ✱	* ■
10	Swivel Post	1	W4000126 ▲	W15000126 *
11	Post O-Ring	3	▲ ✱	* ■
12	Post Screws	4	▲	*
13	Post Base O-Ring	2	▲ ✱	* ■

▲ Indicates items included and available only as part of Tilt Swivel Assembly: TSP300MKA.

* Indicates items included and available only as part of Tilt Swivel Assembly: TSP300MKB.

✱ Indicates items included and available only as part of Tilt Swivel Seal Kit: TSP300MSK.

NOTES

[illegible]

