

▼ Shown: MS210



- All sets include Enerpac pump, hose, cylinder and gauge
- Lock-on or threaded connectors
- Complete maintenance set for almost every maintenance application.

The Universal Hydraulic Tool Box



Maintenance Sets

Enerpac Maintenance sets are a complete assortment of hydraulic powered tools. Using these sets allows you to quickly configure a unique tool to meet your most difficult jobs.

Built around the Enerpac lightweight hand pump, hose and cylinder, these sets enable you to push, pull, lift, press, straighten, spread and clamp with forces up to 12,5 ton.



More Information

For detailed information on all included attachments, see the next pages.

Page: 176



Clamping a workpiece is just one of the many applications for the Enerpac maintenance sets.

▼ QUICK SELECTION CHART

Capacity using attachments* ton (kN)	Set Model Number						Number of Attachment Components	 (kg)
2,5 (22)	MS24	P142	HC7206	RC55	GP10S	GA4	33	26
2,5 (22)	MSFP5	P142	HC7206	RC55	GP10S	GA4	24	20
5,0 (50)	MSFP10	P392	HC7206	RC106	G2535L	GA3	23	48
5,0 (50)	MS210	P392	HC7206	RC106	GP10S	GA2	35	63
12,5 (116)	MS220	P392	HC7206	RC256	GP10S	GA2	13	95
5,0-12,5 (50-116)	MS21020	P392	HC7206	RC102, 106, 256	GP10S	GA2	53	158

* If no attachments are being used, capacity is double these values. Maximum operating pressure is then 700 bar.

Universal Maintenance Sets



CAUTION!

When cylinders are used with maintenance set attachments or components, the maximum system pressure must be limited to half the rated pressure (350 bar).



WARNING!

Only use attachments provided with set. Non-Enerpac attachments and longer extension tubes will reduce column strength, potentially creating unsafe conditions.

MS Series



Capacity (using attachments):

2,5 - 12,5 ton

Maximum Operating Pressure:

350 bar

▼ APPLICATION EXAMPLES





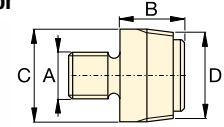
CAUTION! When cylinders are used with maintenance set attachments or components, the maximum system pressure must be limited to half the rated pressure (350 bar).

Note: All dimensions in millimetres.

Set Model Number	MS24	MSFP5	MSFP10	MS210	MS220	MS21020
Base, Collar and Plunger Attachments	2,5 ton	2,5 ton	5,0 ton	5,0 ton	12,5 ton	5,0 - 12,5 ton
Cylinder Model(s)	RC55	RC55	RC106	RC106	RC256	RC102, 106, 256
1	A23	A23	A13	A13	A-28	A13, A28
2	A25	A25	A21	A21	A-27	A21, A27
3	A1034	A1034	A20	A20	A-595	A20, A595
4	MZ4010	MZ4010	A14	A14	A-243	A14, A243
5	A545	A545	A10	A10	-	A10 (2x)
6	-	-	-	A8	-	A8
7	A530	A530	A6	A6	-	A6
8	MZ4011	-	-	A192	-	A192
9	-	-	-	A305	-	A305
10	A531	A531	A18	A18	-	A18
11	-	-	-	A185	-	A185
12	A532	A532	A15	A15	-	A15
13	-	-	-	-	A-607	A607
14	A629	A629	A129	A129	-	A129
15	A539	A539	A128	A128	-	A128
Chains and Attachments for Pulling Applications	2,5 ton	2,5 ton	5,0 ton	5,0 ton	12,5 ton	5,0 - 12,5 ton
16	A558	-	-	A132	A238	A132, A238
17	-	-	-	A5 (2x)	-	A5 (2x)
18	A557 (2x)	-	-	A141 (2x)	A218 (2x)	A141 (2x), A18 (2x)
Extension Tubes, Connectors and Adaptors	2,5 ton	2,5 ton	5,0 ton	5,0 ton	12,5 ton	5,0 - 12,5 ton
19	A544	-	-	A19 (2x)	A242 (2x)	A19 (2x) A242 (2x)
20	WR5	WR5	WR5	A92	-	A92
21	MZ4013 (4x)	MZ4013 (4x)	A16 (4x)	A16 (4x)	-	A16 (4x)
22	MZ4007 (3x)	MZ4007 (3x)	MZ1050 (3x)	MZ1050 (2x)	-	MZ1050 (3x)
23	MZ4008 (2x)	-	-	MZ1051	-	MZ1051 (2x)
24	MZ4009	MZ4009	MZ1052	MZ1052	-	MZ1052
25	-	-	-	A285	-	A285
26	A650	-	-	-	-	-
27 Length (mm)	76	MZ4002	MZ4002	-	-	-
	127	MZ4003	MZ4003	MZ1002	MZ1002	-
	254	MZ4004	MZ4004	MZ1003	MZ1003	A239
	254					A239
	457	MZ4005 (2x)	MZ4005	MZ1004	MZ1004	A240
	457					A240
	584	MZ4006	MZ4006	-	-	-
	762	-	-	MZ1005	MZ1005	A241
	762	-	-	-	-	A241
28 Storage Case	CM6	CM6	CW350	CW350	CW350	CW750
Set Weight (kg)	26	20	48	63	95	158

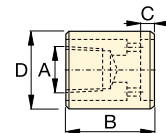
Base, Collar and Plunger Attachments

1 Threaded Adaptor



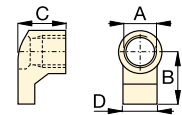
ton	Model Nr.	A	B	C	D
2,5	A23	3/4" - 16 UN	28	26	3/4" - 14 NPT
5,0	A13	1" - 8 UN	31	42	1 1/4" - 11 1/2 NPT
12,5	A28	1 1/2" - 16 UN	47	69	2" - 11 1/2 NPT

2 Base Attachment



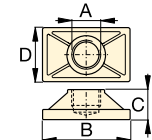
ton	Model Nr.	A	B	C	D
2,5	A25	3/4" - 14 NPT	50	12	44
5,0	A21	1 1/4" - 11 1/2 NPT	57	12	65
12,5	A27	2" - 11 1/2 NPT	63	12	98

3 Collar Toe



ton	Model Nr.	A	B	C	D
2,5	A1034	1 1/2" - 16 UN	54	50	31
5,0	A20	2 1/4" - 14 UN	80	57	57
12,5	A595	3 5/16" - 12 UN	103	51	80

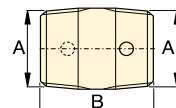
4 Flat Base



ton	Model Nr.	A	B	C	D
2,5	MZ4010	3/4" - 14 NPT	114	31	63
5,0	A14	1 1/4" - 11 1/2 NPT	165	35	88
12,5	A243 *	2" - 11 1/2 NPT	165	58	165

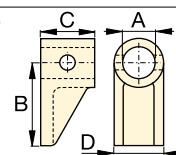
* A243 is a round base model.

5 Threaded Connector



ton	Model Nr.	A	B
2,5	A545	3/4" - 14 NPT	35
5,0	A10	1 1/4" - 11 1/2 NPT	41

6 Lock-on Clamp Toe



ton	Model Nr.	A	B	C	D
5,0	A8	43	105	50	57

Universal Maintenance Sets, MS-Series

7 Threaded Plunger Toe

ton	Model Nr.	A	B	C	D
2,5	A530	¾" - 14 NPT	57	25	33
5,0	A6	1¼" - 11½ NPT	82	31	57

14 Wedge Head

ton	Model Nr.	A	B	C	D
2,5	A629	¾" - 14 NPT	69	33	28
5,0	A129	1¼" - 11½ NPT	101	50	44

20 Spreader

ton	Model Nr.	A	B	C	D
1,0	WR5	—	223	12,8	94
1,0	A92	2¼" - 14 UN	244	35	158

8 Collar Clamp Head

ton	Model Nr.	A	B	C	D
2,5	MZ4011	¾" - 14 NPT	49	76	1½" - 16 UN
5,0	A192	—	42	63	2¼" - 14 UN

15 Rubber Flex Head

ton	Model Nr.	A	B	C
2,5	A539	¾" - 14 NPT	44	69
5,0	A128	1¼" - 11½ NPT	86	86

21 Lock Pin

ton	Model Nr.	A	B
2,5	MZ4013	7,9	41
5,0	A16	11,2	82

9 Spreader Toe

ton	Model Nr.	A	B	C	D
5,0	A305	1¼" - 11½ NPT	114	25	50

Chains and Attachments for Pulling

16 Single Chain Plate

ton	Model Nr.	A	B	C	D
2,5	A558	1½" - 16 UN	196	39	44
5,0	A132	2¼" - 14 UN	307	63	79
12,5	A238	3⅝" - 12 UN	450	102	125

22 Lock-on Connector

ton	Model Nr.	A	B
2,5	MZ4007	19	79
5,0	MZ1050	33	127

10 Serrated Saddle

ton	Model Nr.	A	B	C
2,5	A531	¾" - 14 NPT	27	31
5,0	A18	1¼" - 11½ NPT	38	50

17 Double Chain Plate

ton	Model Nr.	A	B	C	D
5,0	A5	1¼" - 11½ NPT	130	50	126

23 Male Lock-on Adaptor

ton	Model Nr.	A	B	C
2,5	MZ4008	¾" - 14 NPT	60	19
5,0	MZ1051	1¼" - 11½ NPT	90	33

11 Smooth Saddle

ton	Model Nr.	A	B	C
5,0	A185	1¼" - 11½ NPT	38	50

18 Chain with Hook

ton	Model Nr.	Chain Length
2,5	A557	1,5 metres
5,0	A141	1,8 metres
12,5	A218	2,4 metres

24 Female Lock-on Adaptor

ton	Model Nr.	A	B	C
2,5	MZ4009	¾" - 14 NPT	65	19
5,0	MZ1052	1¼" - 11½ NPT	96	33

12 90° V-Base

ton	Model Nr.	A	B	C	D
2,5	A532	¾" - 14 NPT	38	47	25
5,0	A15	1¼" - 11½ NPT	54	57	54

Tubes, Connectors and Adaptors

19 Pipe Coupling

ton	Model Nr.	A	B	C
2,5	A544	¾" - 14 NPT	42	33
5,0	A19	1¼" - 11½ NPT	49	54
12,5	A242	2" - 11½ NPT	88	82

25 Adjustable Extension

ton	Model Nr.	A	B	C	D
5,0	A285	1¼" - 11½ NPT	335	441	33

13 Plunger Base

ton	Model Nr.	A	B	C
12,5	A607	2" - 11½ NPT	166	38

26 Slip-on Extension

ton	Model Nr.	A	B	C
2,5	A650	¾" - 14 NPT	200	365