

System

System Components

From the simplest to the most complex hydraulic system, Enerpac's system components help you complete your design. Gauges, pressure switches, couplers and hoses are simple but necessary items for any hydraulic system, and Enerpac can provide the full range.












Technical support

- Safety instructions
- Basic hydraulic information
- Advanced hydraulic technology
- FMS (Flexible Machining Systems) technology
- Conversion charts and hydraulic symbols.

 197 ▶

components

	▼ series	▼ pages	
Pressure switches	IC, PB PSCK	188	
Digital pressure gauge	DGR	189	
Pressure gauges	G	190	
Gauge accessories	GA, GS NV, FM	191	
Manifolds, couplers, tubing	A, AH, AR CH, CR, T	192	
Hydraulic safety hoses	H700	192	
Hydraulic oil	HF95	193	
High pressure filters	FL	193	
High pressure fittings	BFZ, FZ	194-196	

Shown: PSCK-8, IC-51



Enerpac remote mounted pressure switches monitor the hydraulic system to determine any change of pressure. The signal can then be used to control the pump, or other peripheral devices.

IC-series

The IC-series electrical pressure switches provide pressure readings for monitoring and/or control of hydraulic system pressure in workholding systems.

PB-4 Adaptor

The PB-4 is an adaptor for the PSCK-8 or PSCK-9 pressure switches. The G1/4" male end of the adaptor can be installed in the port of a manifold or valve body.

Integrated in your hydraulic system, the pressure switch can be used to automate your clamping cycles.



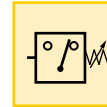
Reliable electrical control of hydraulic power

- Compact design minimizes space requirements on fixture
- Switch is easily adjustable to meet system requirements.

Pressure: 20 - 515 bar

Accuracy: 2%

- E** Presostatos
- F** Pressostats
- D** Druckschalter



Options

Fittings

□ 194 ▶



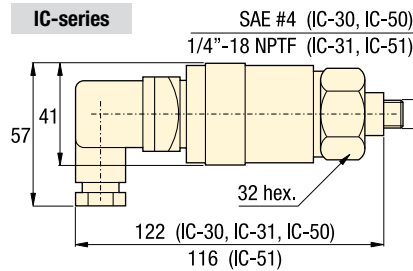
Gauges

□ 190 ▶

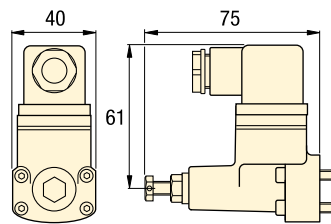


Important

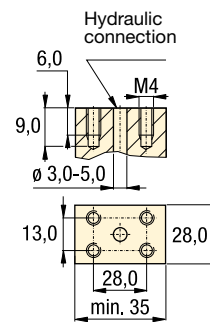
Do not exceed the maximum pressure.



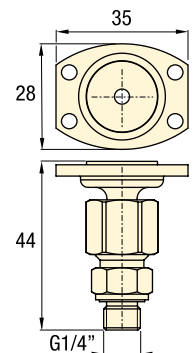
PSCK-8, 9



Mounting dimensions



PB-4



Product selection

Adjustable pressure range	Electrical specifications	Model number	Deadband	Switch point repeatability	Oil port	kg
bar	at 50/60 Hz		bar	% of range		
▼ Electrical pressure switches						
35 - 240	125 VAC @ 5 A	IC-30	7 - 35	+/-2	SAE #4	0,5
35 - 240	125 VAC @ 5 A	IC-31	7 - 35	+/-2	1/4"-18 NPTF	0,5
205 - 515	125 VAC @ 5 A	IC-50	17 - 55	+/-2	SAE #4	0,5
205 - 515	125 VAC @ 5 A	IC-51	17 - 55	+/-2	1/4"-18 NPTF	0,5
100 - 350	115 VAC @ 2 A	PSCK-8	17 - 55	+/-2	Manifold mount	0,4
20 - 210	115 VAC @ 2 A	PSCK-9	17 - 55	+/-2	Manifold mount	0,4
▼ Mounting adaptor for PSCK-pressure switches						
-	-	PB-4	-	-	G 1/4"	0,1

Pressure: 0 - 1380 bar

Accuracy: $\pm 0,25\%$

Voltage: 3 VDC (battery)

- E** Manómetros digitales
- F** Manomètres digitaux
- D** Digitale Manometer



Options

Fittings

194 ▶



Gauge adaptors

190 ▶



Important

Do not exceed the maximum pressure.

Gauges can be easily installed into the hydraulic system using GA-3 gauge adaptor.

191 ▶

Protective cover included

Fits over face of gauge for protection in harsh environments.

Easy and precise pressure monitoring

- Rated for system pressure up to 1380 bar
- Displays in multiple units: bar, psi, mPA, kg/cm² (user selectable)
- Zero reset – ensures that gauge reads actual system pressure
- Batteries included, condition indicator on readout
- IP65 rated case design
- Shut off selectable – menu driven
- UL listed, CE and RoHS compliant.

Shown: DGR-2



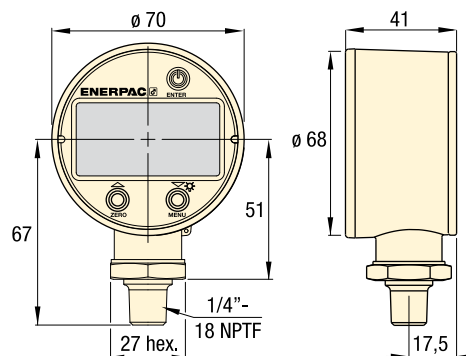
Enerpac digital pressure gauges offer greater accuracy and are easier to read than conventional dial gauges, greatly enhancing your ability to monitor and control hydraulic system pressure.

DGR-2 Remote Operation

Battery operated for additional flexibility. Includes maximum and minimum pressure capture.

Back-lit Readout

Back-lit readout allows easy reading in less than ideal lighting.



Product selection

Pressure rating	Model	Pressure rating	Pressure rating	Pressure rating	
bar		psi	MPa	Kg/cm ²	
Range Resolution		Range Resolution	Range Resolution	Range Resolution	kg
0 - 1380 0,1	DGR-2	0 - 20.000 1	0 - 140 0,01	0 - 1400 0,1	0,2

Shown: GS-2, G-2512L, GS-3



Enerpac gauges provide a safe and inexpensive monitoring system for your hydraulic circuit

Highly reliable and accurate pressure sensing

- ± 1,5% accuracy of full scale
- G-series: All pressure sensing parts sealed and damped by glycerine for long life
- Includes safety blow-out disk and pressure equalizing membrane to prevent overpressurization
- Copper alloy, coiled safety Bourdon tube for 70 bar and higher
- Dual bar and psi scale readings, ø63 mm gauge face.

Gauge accessories for easy installation

- Needle valves providing positive shut-off
- 303 stainless steel stem (NV-251)
- Snubber valves to control pressure surges between gauge and hydraulic system
- Gauge adaptors – male end screws into pump or cylinder, female port accepts hose or coupler, the third port is for gauge connection
- FM-25NG for panel mounting of ø63 mm gauges.

Product selection

Pressure gauge mounting style	Pressure range		Model number	Bar graduation		PSI graduation		A mm	B mm	D mm	G
	bar	psi		Major bar	Minor bar	Major psi	Minor psi				
▼ Pressure gauge – Lower mount											
	0 - 7	0 - 100	G-2509L	1	0,01	10	2	84	37	63	1/4" NPTF
	0 - 11	0 - 160	G-2510L	1	0,02	10	2	84	37	63	1/4" NPTF
	0 - 14	0 - 200	G-2511L	1	0,02	50	5	84	37	63	1/4" NPTF
	0 - 20	0 - 300	G-2512L	5	0,05	50	5	84	37	63	1/4" NPTF
	0 - 40	0 - 600	G-2513L	10	1	100	10	84	37	63	1/4" NPTF
	0 - 70	0 - 1000	G-2514L	10	1	100	20	84	37	63	1/4" NPTF
	0 - 140	0 - 2000	G-2515L	10	2	500	50	84	37	63	1/4" NPTF
	0 - 200	0 - 3000	G-2516L	50	5	500	50	84	37	63	1/4" NPTF
	0 - 400	0 - 6000	G-2517L	100	10	1000	100	84	37	63	1/4" NPTF
	0 - 700	0 - 10.000	G-2535L	100	10	2000	200	84	37	63	1/4" NPTF
	0 - 70	0 - 1000	G-2514SL	10	1	100	20	93	31	63	SAE #4
	0 - 200	0 - 3000	G-2516SL	50	5	500	50	93	31	63	SAE #4
	0 - 400	0 - 6000	G-2517SL	100	10	1000	100	93	31	63	SAE #4
	0 - 700	0 - 10.000	G-2535SL	100	10	2000	200	93	31	63	SAE #4
▼ Pressure gauge – Rear mount											
	0 - 70	0 - 1000	G-2531R	10	1	100	20	63	37	63	1/4" NPTF
	0 - 400	0 - 6000	G-2534R	100	10	1000	100	63	37	63	1/4" NPTF
	0 - 700	0 - 10.000	G-2537R	100	10	2000	200	63	37	63	1/4" NPTF
	0 - 70	0 - 1000	G-2531SR	10	1	100	20	62	31	63	SAE #4
	0 - 200	0 - 3000	G-2533SR	50	5	500	50	62	31	63	SAE #4
	0 - 400	0 - 6000	G-2534SR	100	10	1000	100	62	31	63	SAE #4
	0 - 700	0 - 10.000	G-2537SR	100	10	2000	200	62	31	63	SAE #4
	0 - 70	0 - 1000	1531R *	10	1	100	20	50	25	38	1/8" NPTF
	0 - 200	0 - 3000	1533R *	50	10	500	100	50	25	38	1/8" NPTF
	0 - 400	0 - 6000	1534R *	100	10	1000	100	50	25	38	1/8" NPTF
	0 - 700	0 - 10.000	1537R *	100	10	2000	200	50	25	38	1/8" NPTF

* Dry gauges.

Pressure: 0 - 700 bar

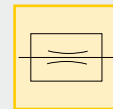
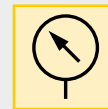
Accuracy: 1,5% /full scale

Gauge face: \varnothing 63 mm

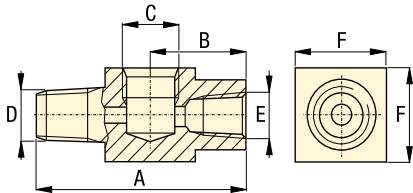
E Manómetros

F Manomètres

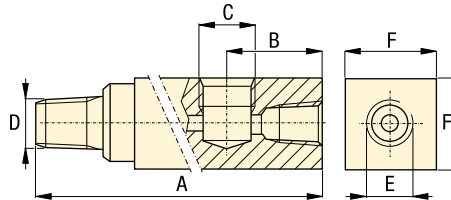
D Manometer



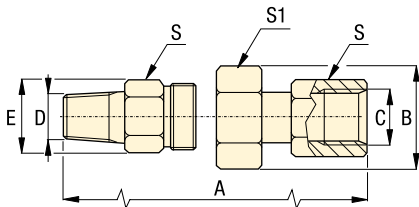
GA-1



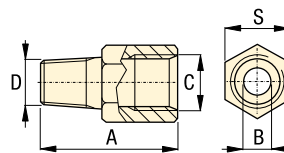
GA-2, -3, -4



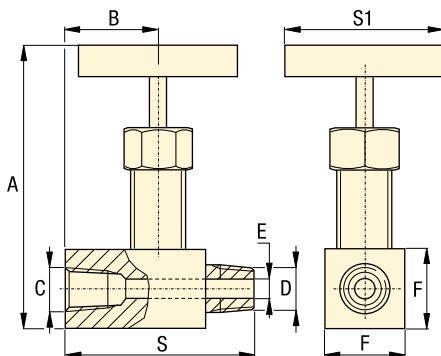
GA-918



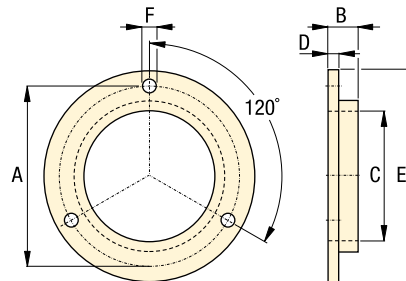
GS-2, -3



NV-251, V-91



FM-25NG



Product dimensions in mm []

Gauge port NPTF	Max. pressure bar	Model number	Dimensions							
			A	B	C	D	E	F	S	S1
▼ Gauge adaptors										
1/2"	700	GA-1	71	31	1/2"NPTF	3/8"NPTF	3/8"NPTF	32	-	-
1/2"	700	GA-2	155	35	1/2"NPTF	3/8"NPTF	3/8"NPTF	32	-	-
1/4"	700	GA-3	133	35	1/4"NPTF	3/8"NPTF	3/8"NPTF	32	-	-
1/2"	700	GA-4	111	35	1/2"NPTF	1/4"NPTF	3/8"NPTF	32	-	-
▼ Swivel gauge adaptor										
1/2"	700	GA-918	57	44	1/2"NPTF	1/2"NPTF	33	-	29	38
▼ Gauge shut-off valves										
1/4"	700	NV-251	57	29	1/4"NPTF	1/4"NPTF	4,3	19	57	63
1/2"	700	V-91	89	32	1/2"NPTF	1/2"NPTF	4,8	37	64	63
▼ Gauge snubber valves										
1/4"	350	GS-2	41	0,5	1/4"NPTF	SAE #4	-	-	19	-
1/4"	350	GS-3	41	0,5	1/4"NPTF	G 1/4"	-	-	19	-
▼ Flange mounting for panel mounting of G-series gauges										
-	-	FM-25NG	75	4,3	64	1,8	85	3,5	-	-

Options

Hoses and couplers

192 ▶



Digital gauges

189 ▶



Pressure switches

188 ▶



V-10 Auto Damper® valve

157 ▶



Important

Do not exceed maximum pressure.

Gauge snubbers or needle valves are recommended for high cycle applications.

Do not keep gauges under permanent pressure. The use of shut-off valves is recommended.

For basic system set-up information, refer to our "Yellow Pages" section.

202 ▶

Manifolds, hoses, couplers, tubing

Shown: Hoses, Couplers, Manifolds



Use genuine Enerpac manifolds, couplers, hoses and tubings to connect your workholding cylinders or fixtures to the hydraulic power source.

A-series, Manifolds

For multiple hydraulic line connections at one central location directing oil to or from a pressure source.

H700-series, Hoses

High pressure hydraulic hoses, for demanding applications. Thermo-plastic safety hoses for use on all Enerpac pumps and cylinders.

C-series, High Flow Couplers

High pressure couplers recommended for use with all Enerpac pumps and cylinders.

AH, AR-series, Couplers

Spee-D® quick disconnect low leakage couplers for easy connection of hydraulic circuits.

T-series, Tubing

High pressure steel tubing, available in 1,5 m lengths.

Manifolds

- Easy to connect
- Mounting holes on all models

Couplers

- For more safety: couplers cannot be connected or disconnected while under hydraulic pressure

Hydraulic hoses and tubings

- Thermo-plastic safety hoses (max. 700 bar)
- Four layer design, including two high strength wire braids
- High pressure steel tubing for permanent installations.

Important

Do not exceed the maximum pressure.

Inspect hoses and tubing frequently and replace as required.

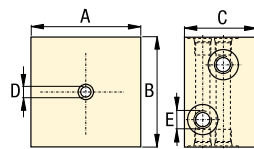
Options

Fittings

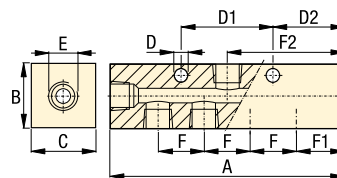
194 ▶



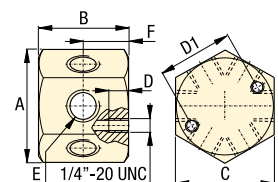
A-63



A-60, -61, -64, -65



A-66



Manifolds dimensions in mm [± 0.1]

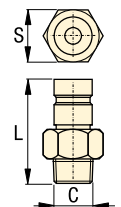
Number of ports	Model number	A	B	C	D	D1	D2	E	F	F1	F2	kg
2 x 4	A-63	76	76	51	6,3	-	-	SAE #4	-	-	-	0,9
5	A-60	89	32	32	7,1	38	25	SAE #4	38	25	44	0,5
7	A-61	165	32	32	7,1	38	32	SAE #4	25	32	83	0,6
7	A-64	178	32	32	6,3	76	32	3/8"-18 NPTF	38	32	89	1,5
7	A-65	368	32	32	6,3	203	32	3/8"-18 NPTF	102	32	184	2,7
6	A-66	58	42	51	13,2	38	-	3/8"-18 NPTF	-	-	-	0,9

Thermoplastic Safety Hoses

Hose length m	Hose End one NPTF	Hose End two NPTF	Internal diameter mm	Model Number	Maximum Pressure bar	kg
0,6	3/8"	3/8"	6,4	H-7202	700	0,5
0,9	3/8"	3/8"	6,4	H-7203	700	0,7
1,8	3/8"	3/8"	6,4	H-7206	700	0,9
3,0	3/8"	3/8"	6,4	H-7210	700	1,4

Couplers

Max. pressure bar	Max. oil flow l/min	Model Nr. coupler complete	Model Nr. female half	Model Nr. male half	Thread size C	L mm	S mm
700	40	C-604	CR-400	CH-604	3/8" NPTF	64	22
700	40	A-604	AR-400	AH-604	3/8" NPTF	42	19
350	17	-	AR-650 *	AH-650	1/4" NPTF	38	17,5
350	17	-	AR-650 *	AH-652	G 1/4"	34	17,5
350	17	-	AR-650 *	AH-654	SAE #4	41	17,5



* Note: Thread size **AR-650** is 1/4" NPTF, dimension S is 20,6 mm. Use **FZ-1055** fitting to connect to 3/8" hose ends.

Tubing

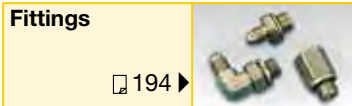
Maximum Pressure bar	Length m	Model number	Internal diameter mm	External diameter inch
350	1,5	T-2560	ø 3,8	ø 1/4"

Hydraulic oil, high-pressure filters

- E** Mangueras, Filtros, Aceite, Acoplamientos
- F** Flexibles, Filtres, Huile, Raccords
- D** Schläuche, Filter, Öl, Kupplungen



Options



Premium hydraulic oil

- Ensures effective lubricity
- Protects essential parts
- Prevents pump cavitation
- Maximum internal heat transfer
- Additives prevent rust, oxidation and sludge.

High-pressure filters

- Plated stainless steel wire mesh screen construction provides large filter area in a compact size
- Bi-directional design allows filtration of oil in either flow direction
- Two piece body construction for easy replacement of filter elements
- High flow rates are obtainable with a minimum pressure drop
- Threaded port connections on each end simplify installation.



Hydraulic oil

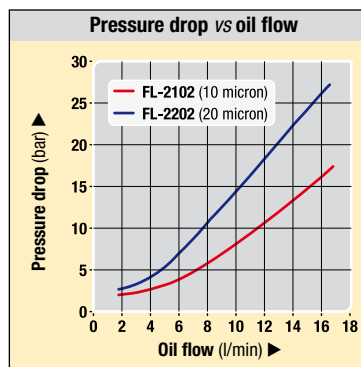
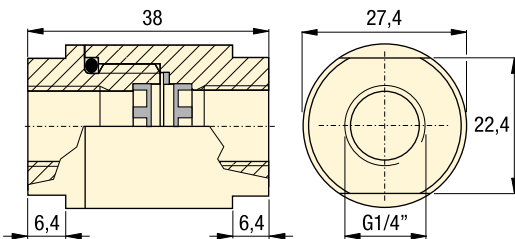
Jerrycan content litres	Model number	kg
1	HF-95X	1,1
5	HF-95Y	5,3
20	HF-95T	21,5

HF-95 Hydraulic Oil Specification	
Viscosity Index	100 min
Viscosity (cSt @ 40 °C)	32
API Gravity	31-33
Density (cSt @ 15 °C)	875
Flash point	204 °C
Pour point	32 °C
Colour	Blue
Working Temperature Range	0 - 60 °C
Ideal working temperature	40 °C



Filtration

20 micron filter provides the longest service life before element replacement.
10 micron filter recommended for more sensitive hydraulic components.



High in-line pressure filters

Model number *	Filtration micron		Filter element set	Maximum Pressure bar	kg
	Nominal	Absolute			
FL-2102	10	25	FL-2101K	350	0,25
FL-2202	20	40	FL-2201K	350	0,25

* Also available with Viton seals; model numbers **FL-2102V** and **FL-2202V**.

www.enerpacwh.com

Shown: HF-95T, HF-95X, HF-95Y



HF-serie, Hydraulic oil

Genuine Enerpac hydraulic oil to guarantee optimal performance and long life of your hydraulic equipment.

FL-series, High-pressure filters

Compact in line high pressure filters prevent chips and debris that have entered the hydraulic fluid system from damaging hydraulic system components.



Important

Do not exceed the maximum pressure.

Use only genuine Enerpac hydraulic oil. The use of any other fluid will render your Enerpac warranty null and void.

Hydraulic power is distributed by manifolds and transported by hoses and tubing.



ENERPAC 193

High Pressure Fittings *Selection & dimensions*

Shown: FZ-2052, FZ-2054, FZ-2023



Fitting are used to connect all cylinders, components, power sources, tubes, gauges and hoses in a hydraulic system. Enerpac fittings provide flexible, safe and leak-free connections.

Multiple hydraulic line connections are easily installed with Enerpac fittings and manifolds.

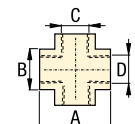
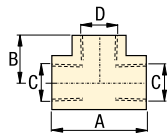
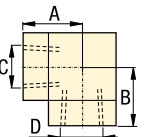
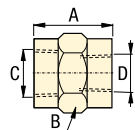
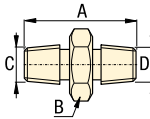
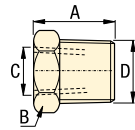
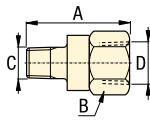


Proper connection for hydraulic components

- Male and female BSPP, NPTF and SAE threaded fittings in common sizes allow easy connection of all components.
- BFZ and FZ-1000 models are 700 bar maximum pressure
- FZ-2000 models are 350 bar maximum pressure.

Product selection

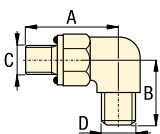
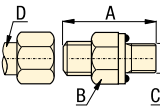
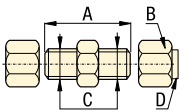
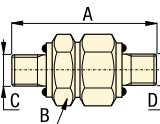
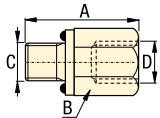
From	To	Maximum pressure bar	Model number	Dimensions			
				A mm	B mm	C	D
▼ Adapters							
G 1/4"	1/8" NPTF	700	BFZ-16411	35	19	1/4"-18 NPTF	G 1/4"
G 1/4"	1/8" NPTF	700	BFZ-16421	31	19	1/8"-27 NPTF	G 1/4"
G 3/8"	1/4" NPTF	700	BFZ-16323	43	24	1/4"-27 NPTF	G 3/8"
G 3/8"	3/8" NPTF	700	BFZ-16324	43	24	3/8"-27 NPTF	G 3/8"
1/4" NPTF	1/8" NPTF	700	FZ-1642	31	19	1/8"-27 NPTF	1/4"-18 NPTF
3/8" NPTF	1/4" NPTF	700	FZ-1055	37	24	1/4"-18 NPTF	3/8"-18 NPTF
1/2" NPTF	1/4" NPTF	700	FZ-1633	43	29	1/4"-18 NPTF	1/2"-14 NPTF
1/2" NPTF	3/8" NPTF	700	FZ-1634	43	29	3/8"-18 NPTF	1/2"-14 NPTF
SAE #4	1/4" NPTF	350	FZ-2007	29	19	7/16"-20 UN	1/4"-18 NPTF
SAE #4	1/8" NPTF	350	FZ-2008	25	14	7/16"-20 UN	1/8"-27 NPTF
SAE #4	SAE #2	350	FZ-2022	29	17	5/16"-24 UN	7/16"-20 UN
▼ Reducers							
1/4" NPTF	3/8" NPTF	700	FZ-1630	22	22	1/4"-18 NPTF	3/8"-18 NPTF
1/4" NPTF	1/2" NPTF	700	FZ-1661	28	22	1/4"-18 NPTF	1/2"-14 NPTF
SAE #6	SAE #8	350	FZ-2029	35	27	3/4"-16 UN	9/16"-18 UN
3/8" NPTF	G 1/4"	700	BFZ-16301	19	19	G 1/4"	3/8"-18 NPTF
▼ Male Nipples							
1/4" NPTF	1/4" NPTF	700	FZ-1608	37	16	1/4"-18 NPTF	1/4"-18 NPTF
3/8" NPTF	3/8" NPTF	700	FZ-1617	37	19	3/8"-18 NPTF	3/8"-18 NPTF
3/8" NPTF	3/8" NPTF	700	FZ-1619	51	19	3/8"-18 NPTF	3/8"-18 NPTF
3/8" NPTF	G 1/4"	700	BFZ-305	36	19	3/8"-18 NPTF	G 1/4"
▼ Female Connectors							
1/4" NPTF	1/4" NPTF	700	FZ-1605	29	19	1/4"-18 NPTF	1/4"-18 NPTF
3/8" NPTF	1/4" NPTF	700	FZ-1615	29	22	3/8"-18 NPTF	1/4"-18 NPTF
3/8" NPTF	3/8" NPTF	700	FZ-1614	29	22	3/8"-18 NPTF	3/8"-18 NPTF
1/2" NPTF	3/8" NPTF	700	FZ-1625	38	29	1/2"-14 NPTF	3/8"-18 NPTF
▼ Elbows							
1/4" NPTF	1/4" NPTF	700	FZ-1638	23	19	1/4"-18 NPTF	1/4"-18 NPTF
3/8" NPTF	3/8" NPTF	700	FZ-1610	26	22	3/8"-18 NPTF	3/8"-18 NPTF
▼ Tee							
1/4" NPTF	1/4" NPTF	700	FZ-1637	45	19	1/4"-18 NPTF	1/4"-18 NPTF
3/8" NPTF	3/8" NPTF	700	FZ-1612	52	22	3/8"-18 NPTF	3/8"-18 NPTF
▼ Cross							
3/8" NPTF	3/8" NPTF	700	FZ-1613	52	7/8"	3/8"-18 NPTF	3/8"-18 NPTF



 **Product selection**

From	To	Maximum pressure bar	Model number	Dimensions			
				A mm	B mm	C	D
▼ Adapters							
1/8" NPTF	SAE #4	350	FZ-2075	27	17	1/8"-27 NPTF	1/4"-18 NPTF
1/4" NPTF	SAE #4	350	FZ-2042	33	17	1/4"-18 NPTF	7/16"-20 UN
1/4" NPTF	G 1/4"	700	BFZ-16411	35	19	1/4"-18 NPTF	G 1/4"
SAE #4	1/8" NPTF	350	FZ-2008	25	14	7/16"-20 UN	1/8"-27 NPTF
SAE #4	1/4" NPTF	350	FZ-2007	29	19	7/16"-20 UN	1/4"-18 NPTF
SAE #2	SAE #4	350	FZ-2022	26	14	5/16"-24 UN	7/16"-20 UN
SAE #6	1/4" NPTF	350	FZ-2056	29	19	9/16"-18 UN	1/4"-18 NPTF
SAE #8	1/4" NPTF	350	FZ-2067	29	22	3/4"-16 UN	1/4"-18 NPTF
SAE #8	3/8" NPTF	350	FZ-2069	33	22	3/4"-16 UN	3/8"-18 NPTF
G 1/8"	1/8" NPTF	350	FZ-2055	25	16	G 1/8"	1/8"-27 NPTF
G 1/8"	1/4" NPTF	350	FZ-2060	33	19	G 1/8"	1/4"-18 NPTF
G 1/8"	SAE #4	350	FZ-2066	25	17	G 1/8"	7/16"-20 UN
G 1/4"	1/4" NPTF	350	FZ-2023	33	19	G 1/4"	1/4"-18 NPTF
G 1/4"	SAE #4	350	FZ-2065	28	19	G 1/4"	7/16"-20 UN
▼ Straight union							
SAE #4	SAE #4	350	FZ-2005	32	14	7/16"-20 UN	7/16"-20 UN
SAE #6	SAE #6	350	FZ-2028	36	17	9/16"-18 UN	9/16"-18 UN
SAE #8	SAE #8	350	FZ-2040	40	22	3/4"-16 UN	3/4"-16 UN
▼ Straight union to tube ends							
ø 1/4"	ø 1/4"	350	FZ-2033 *	35	13	7/16"-20 UN	ø 1/4"
ø 1/4"	ø 1/4"	350	FZ-2013 **	52	13	7/16"-20 UN	ø 1/4"
▼ Adaptors to tube end							
1/8" NPTF	ø 1/4"	350	R-1054 *	31	13	1/8"-27 NPTF	ø 1/4"
1/4" NPTF	ø 1/4"	350	FZ-2020 *	36	14	1/4"-18 NPTF	ø 1/4"
1/4" NPTF	ø 3/8"	350	FZ-2072 *	36	16	1/4"-18 NPTF	ø 3/8"
1/4" NPTF	ø 1/4"	350	FZ-2012 **	34	14	1/4"-18 NPTF	ø 1/4"
3/8" NPTF	ø 1/4"	350	FZ-2061 *	37	19	3/8"-18 NPTF	ø 1/4"
3/8" NPTF	ø 3/8"	350	FZ-2068 *	37	19	3/8"-18 NPTF	ø 3/8"
SAE #2	ø 1/4"	350	FZ-2025 *	26	14	5/16"-24 UN	ø 1/4"
SAE #4	ø 1/4"	350	FZ-2019 *	32	14	7/16"-20 UN	ø 1/4"
SAE #4	ø 1/4"	350	FZ-2001 **	29	14	7/16"-20 UN	ø 1/4"
SAE #6	ø 1/4"	350	FZ-2059 *	33	17	9/16"-18 UN	ø 1/4"
SAE #8	ø 1/4"	350	FZ-2039 *	35	22	3/4"-16 UN	ø 1/4"
SAE #8	ø 3/8"	350	FZ-2070 *	35	22	3/4"-16 UN	ø 3/8"
G 1/8"	ø 1/4"	350	FZ-2053 *	39	14	G 1/8"	ø 1/4"
G 1/4"	ø 1/4"	350	FZ-2054 *	35	19	G 1/4"	ø 1/4"
G 1/4"	ø 3/8"	350	FZ-2064 *	35	19	G 1/4"	ø 3/8"
▼ Elbow to tube end							
1/8" NPTF	ø 1/4"	350	FZ-2074 *	20	11	1/8"-27 NPTF	ø 1/4"
1/4" NPTF	ø 1/4"	350	FZ-2073 *	28	14	1/4"-18 NPTF	ø 1/4"
1/4" NPTF	ø 1/4"	350	FZ-2076 **	26	14	1/4"-18 NPTF	ø 1/4"
1/4" NPTF	ø 3/8"	350	FZ-2081 *	28	14	1/4"-18 NPTF	ø 3/8"
3/8" NPTF	ø 1/4"	350	FZ-2082 *	31	19	3/8"-18 NPTF	ø 1/4"
3/8" NPTF	ø 3/8"	350	FZ-2083 *	31	14	3/8"-18 NPTF	ø 3/8"
SAE #2	ø 1/4"	350	FZ-2024 *	23	11	5/16"-24 UN	ø 1/4"
SAE #4	ø 1/4"	350	FZ-2035 *	26	14	7/16"-20 UN	ø 1/4"
SAE #4	ø 1/4"	350	FZ-2002 **	26	14	7/16"-20 UN	ø 1/4"
SAE #8	ø 3/8"	350	FZ-2071 *	37	22	3/4"-16 UN	ø 3/8"
G 1/8"	ø 1/4"	350	FZ-2051 *	26	14	G 1/8"	ø 1/4"
G 1/4"	ø 1/4"	350	FZ-2052 *	32	19	G 1/4"	ø 1/4"
ø 1/4"	ø 1/4"	350	FZ-2014 **	23	14	ø 1/4"	ø 1/4"

* Flared
** Flareless



Pressure: 0 - 350 / 700 bar

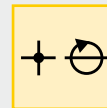
Threads: NPTF, BSPP, SAE

For tubing: ø 1/4 - 3/8", 8 mm

E Acoplamientos

F Raccords

D Verschraubungen



 **Options**

Gauges and accessories

 190 ▶

Hoses, couplers

 192 ▶

Hydraulic oil, manifolds

 193 ▶

 **Important**

Do not exceed the maximum pressure.

Use fittings and tubing in high cycle applications and areas having excessive heat or weld splatter.

To seal NPT threads use anaerobic thread sealers or Teflon paste. Apply Teflon tape one thread from the end of the fitting, to prevent it from winding up in the hydraulic system.

■ *High pressure hydraulic fittings allow connection of many components with minimum effort.*

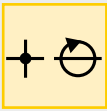


Pressure: 0 - 350 / 700 bar

Threads: BSPP, SAE

For tubing: $\varnothing 1/4 - 3/8'' - 8 \text{ mm}$

- E** Acoplamiento
- F** Raccords
- D** Verschraubungen



Options

Gauges and accessories

190 ▶



Hoses, couplers

192 ▶



Hydraulic oil, manifolds

193 ▶

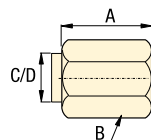
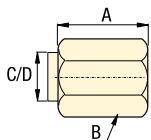
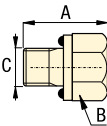
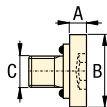
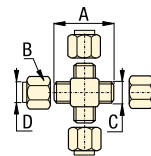
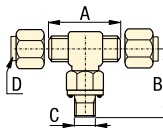
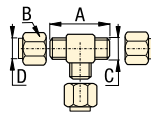
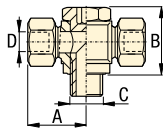
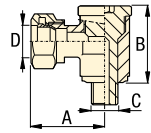


Important

Do not exceed the maximum pressure.

Use fittings and tubing in high cycle applications and areas having excessive heat or weld splatter.

Multiple hydraulic line connections are easily installed with Enerpac fittings and manifolds.



Product selection

From	To	Maximum pressure bar	Model number	Dimensions			
				A mm	B mm	C	D
▼ Swivel banjo BSPP to tube							
G 1/4"	$\varnothing 8$	700	BFZ-307	29	19	G 1/4"	$\varnothing 8$
▼ Swivel T-banjo BSPP to tube							
G 1/4"	$\varnothing 8$	700	BFZ-309	29	19	G 1/4"	$\varnothing 8$
▼ Union tee							
$\varnothing 1/4''$	$\varnothing 1/4''$	350	FZ-2015 **	45	14	7/16"-20 UN	$\varnothing 1/4''$
$\varnothing 1/4''$	$\varnothing 1/4''$	350	FZ-2021 *	45	14	7/16"-20 UN	$\varnothing 1/4''$
▼ Branch tee							
SAE #4	$\varnothing 1/4''$	350	FZ-2036 *	45	14	7/16"-20 UN	$\varnothing 1/4''$
SAE #4	$\varnothing 1/4''$	350	FZ-2004 **	45	14	7/16"-20 UN	$\varnothing 1/4''$
▼ Union cross							
$\varnothing 1/4''$	$\varnothing 1/4''$	350	FZ-2034 *	45	14	7/16"-20 UN	$\varnothing 1/4''$
$\varnothing 1/4''$	$\varnothing 1/4''$	350	FZ-2016 **	45	14	7/16"-20 UN	$\varnothing 1/4''$
▼ SAE plug							
SAE #4	-	350	FZ-2006	3	14	7/16"-20 UN	-
SAE #6	-	350	FZ-2003	3	17	9/16"-20 UN	-
▼ SAE hexagon plug							
SAE #8	-	350	FZ-2041	20	22	3/4"-16 UN	-
▼ Nut and Sleeve for tubing							
$\varnothing 1/4''$	-	350	FZ-2037 *	16	14	37°	$\varnothing 1/4''$
▼ Cap for tubing							
$\varnothing 1/4''$	-	350	FZ-2038 *	16	14	37°	$\varnothing 1/4''$
$\varnothing 1/4''$	-	350	FZ-2017 **	15	14	$\varnothing 1/4''$	$\varnothing 1/4''$
$\varnothing 3/8''$	-	350	FZ-2011 *	19	17	37°	$\varnothing 3/8''$

* Flared

** Flareless